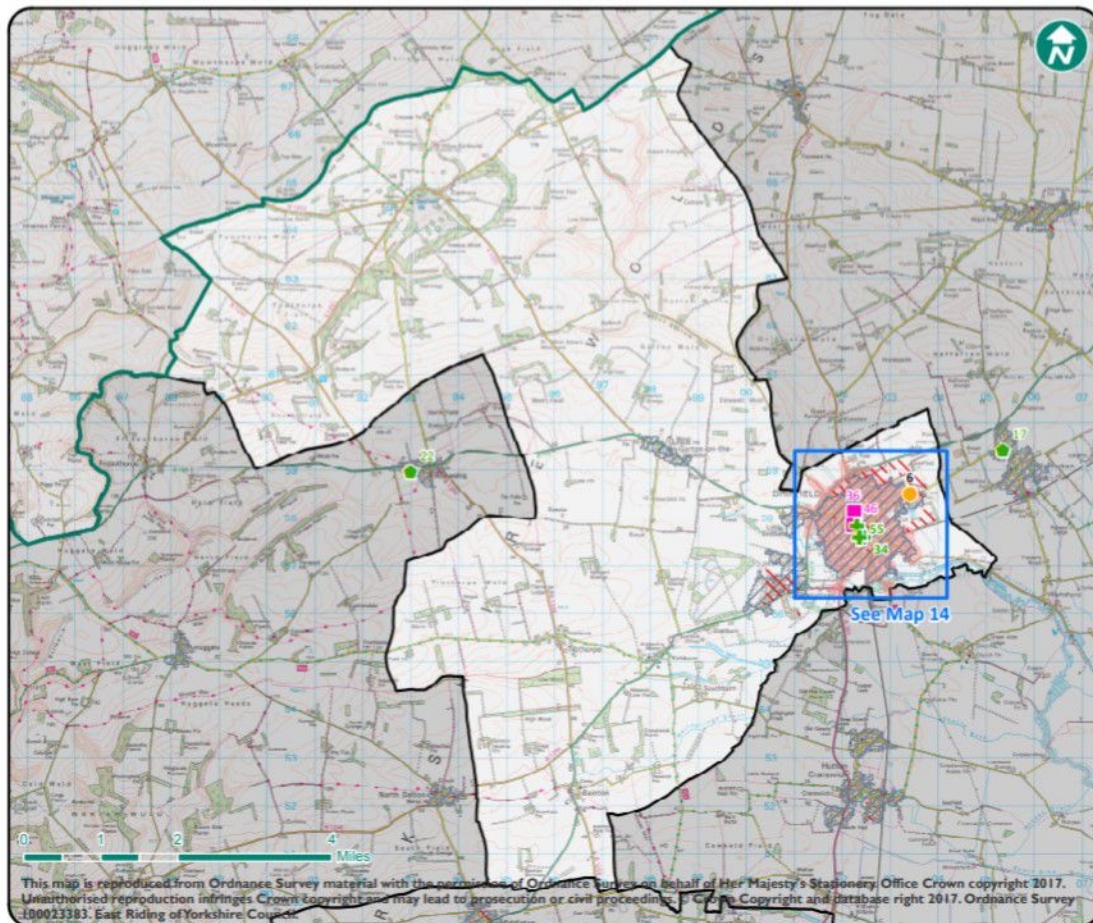


Current Service Provision - Driffield and Rural



GPs and Pharmacies

- Branch
- Branch, Dispensing
- Main
- Main, Dispensing
- ✚ Pharmacies
- ✚ Out of Area Pharmacies

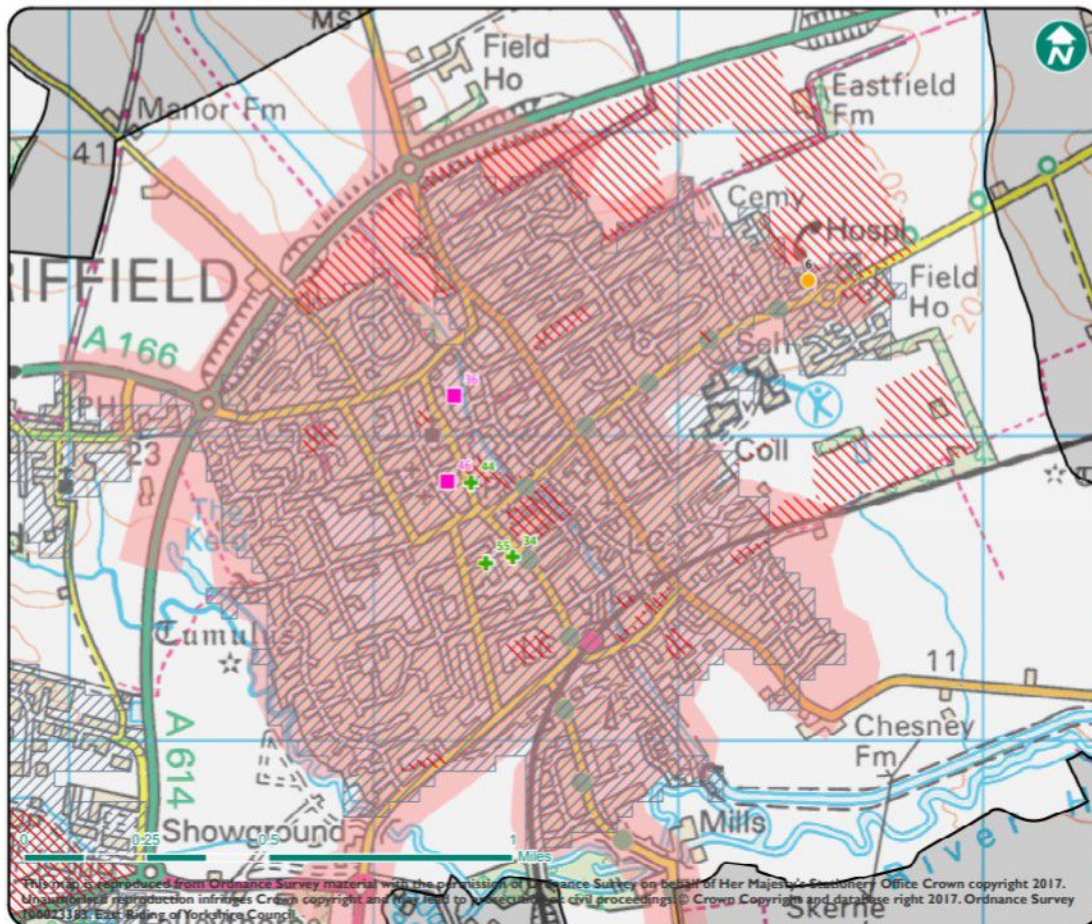
Health Services

- ✚ Accident and Emergency
- H Urgent Care Centre
- Out of Hours
- Independent
- HEYT
- 8-8 Centre (Planned Care)
- Humber FT
- York Teaching Hospital FT
- North Lincolnshire and Goole FT
- CHCP Office location
- CCG Office Location
- GP Walk-In Service
- Health Trainers

Boundaries

- ▨ Built Up Area
- ▨ Strategic Housing Land Availability Assessment (SHLAA)
- East Riding Pharmacy - 1 Mile Coverage
- Out of Area Pharmacy - 1 Mile Coverage
- Ward
- Local Authority

Current Service Provision - Driffield



GPs and Pharmacies

- Branch
- Branch, Dispensing
- Main
- Main, Dispensing
- Pharmacies
- Out of Area Pharmacies

Health Services

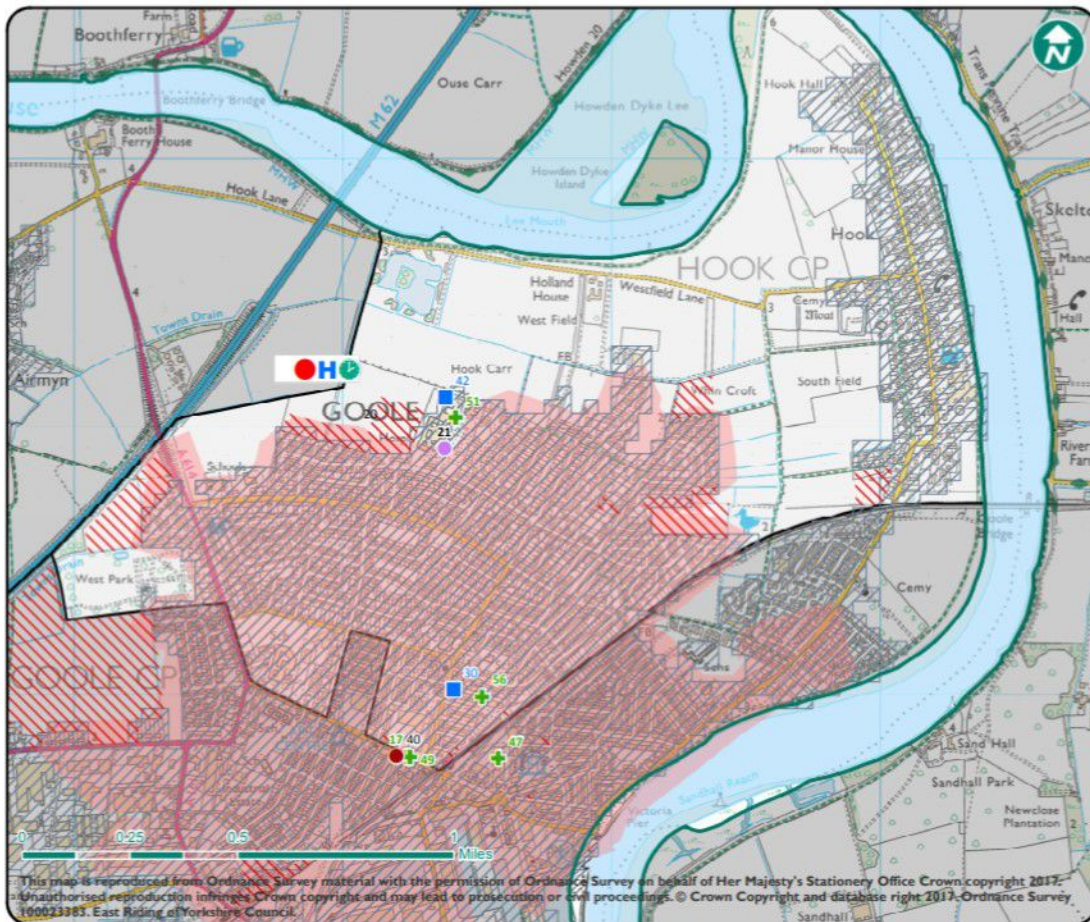
- Accident and Emergency
- Urgent Care Centre
- Out of Hours
- Independent
- HEYT
- 8-8 Centre (Planned Care)
- Humber FT
- York Teaching Hospital FT
- North Lincolnshire and Goole FT
- CHCP Office location
- CCG Office Location
- GP Walk-In Service
- Health Trainers

Boundaries

- ▨ Built Up Area
- ▨ Strategic Housing Land Availability Assessment (SHLAA)
- East Riding Pharmacy - 1 Mile Coverage
- Out of Area Pharmacy - 1 Mile Coverage
- Ward
- Local Authority

This map is reproduced from Ordnance Survey material with the permission of Ordnance Survey on behalf of Her Majesty's Stationery Office Crown copyright 2017. Unauthorised reproduction infringes Crown copyright and may lead to a prosecution for civil proceedings. © Crown Copyright and database right 2017. Ordnance Survey 100021183. East Riding of Yorkshire Council.

Current Service Provision - Goole North



GPs and Pharmacies

- Branch
- Branch, Dispensing
- Main
- Main, Dispensing
- ✚ Pharmacies
- ✚ Out of Area Pharmacies

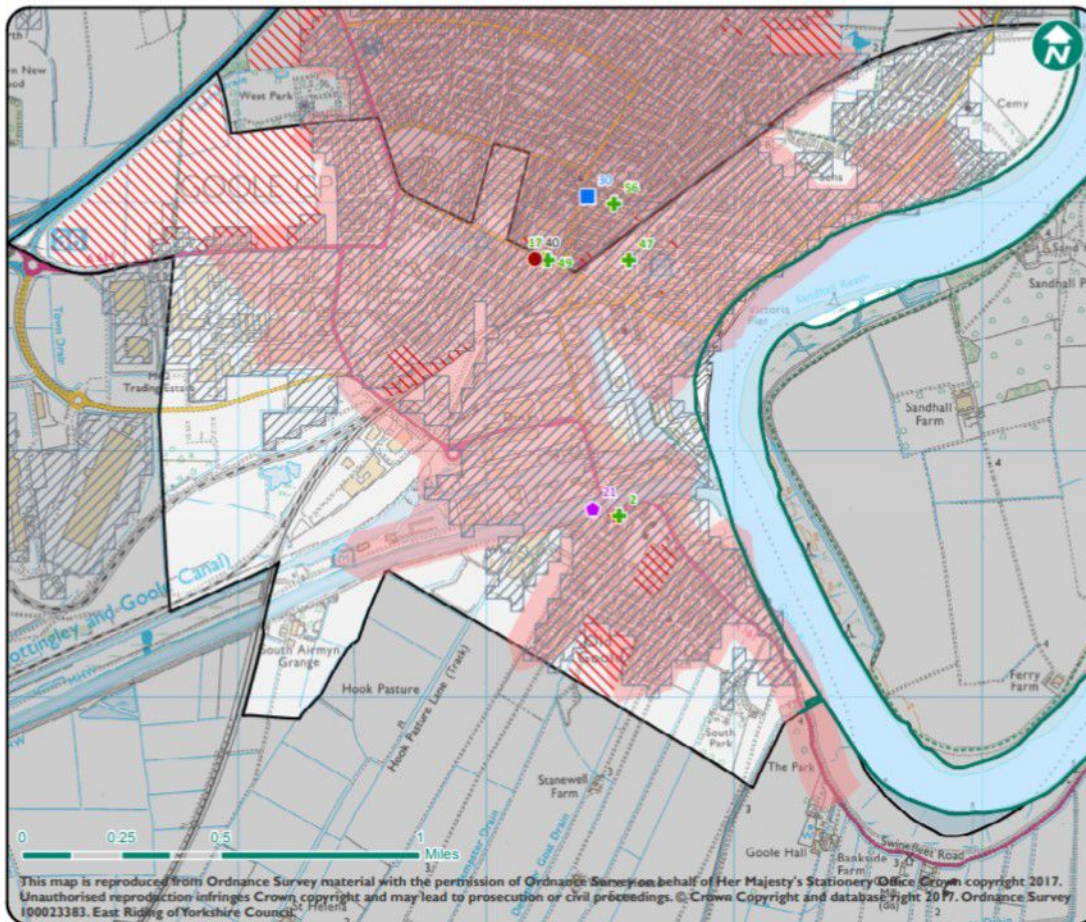
Health Services

- ✚ Accident and Emergency
- H Urgent Care Centre
- Out of Hours
- Independent
- HEYT
- 8-8 Centre (Planned Care)
- Humber FT
- York Teaching Hospital FT
- North Lincolnshire and Goole FT
- CHCP Office location
- CCG Office Location
- GP Walk-In Service
- Health Trainers

Boundaries

- ▨ Built Up Area
- ▨ Strategic Housing Land Availability Assessment (SHLAA)
- ▨ East Riding Pharmacy - 1 Mile Coverage
- ▨ Out of Area Pharmacy - 1 Mile Coverage
- Ward
- Local Authority

Current Service Provision - Goole South



GPs and Pharmacies

- Branch
- Branch, Dispensing
- Main
- Main, Dispensing
- ✚ Pharmacies
- ✚ Out of Area Pharmacies

Health Services

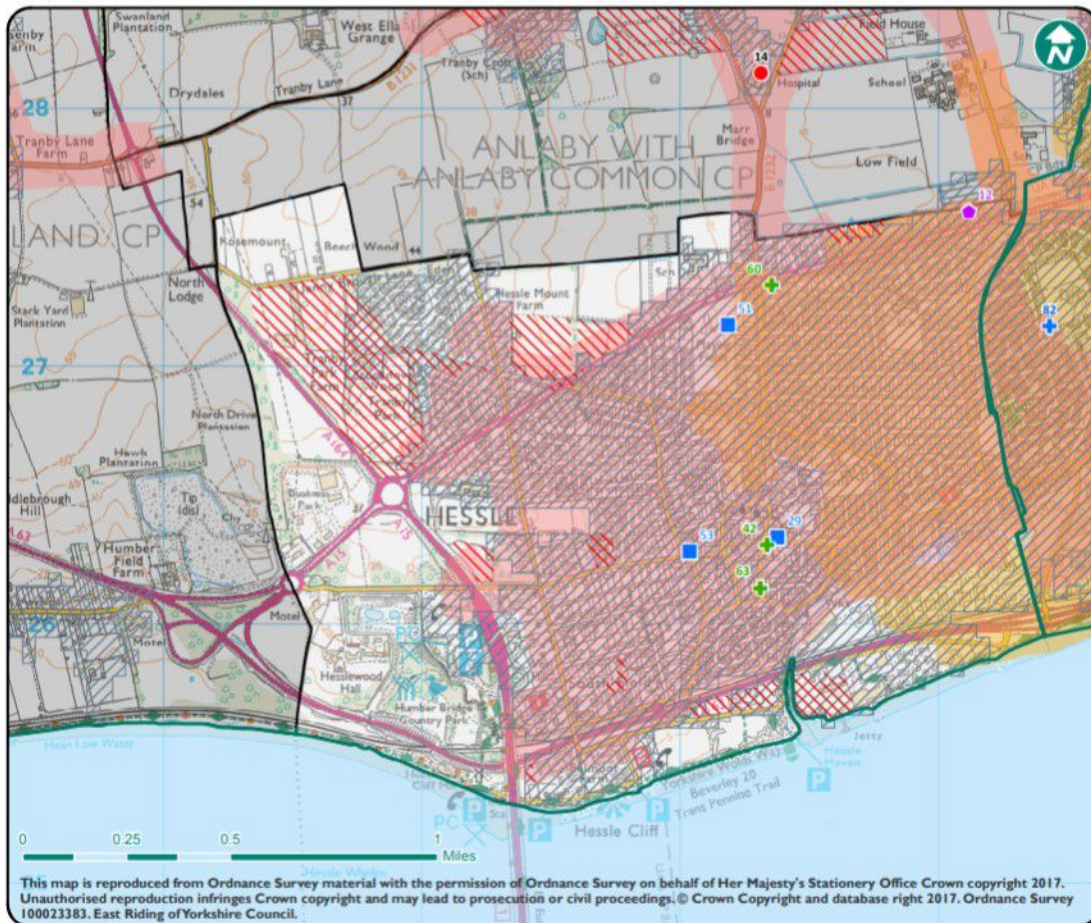
- ✚ Accident and Emergency
- H Urgent Care Centre
- Out of Hours
- Independent
- HEYT
- 8-8 Centre (Planned Care)
- Humber FT
- York Teaching Hospital FT
- North Lincolnshire and Goole FT
- CHCP Office location
- CCG Office Location
- GP Walk-In Service
- Health Trainers

Boundaries

- ▨ Built Up Area
- ▨ Strategic Housing Land Availability Assessment (SHLAA)
- East Riding Pharmacy - 1 Mile Coverage
- Out of Area Pharmacy - 1 Mile Coverage
- Ward
- Local Authority

This map is reproduced from Ordnance Survey material with the permission of Ordnance Survey on behalf of Her Majesty's Stationery Office. Crown copyright 2017. Unauthorised reproduction infringes Crown copyright and may lead to prosecution or civil proceedings. © Crown Copyright and database right 2017. Ordnance Survey 100023383. East Riding of Yorkshire Council.

Current Service Provision - Hessle



GP's and Pharmacies

- Branch
- Branch, Dispensing
- Main
- Main, Dispensing
- Pharmacies
- Out of Area Pharmacies

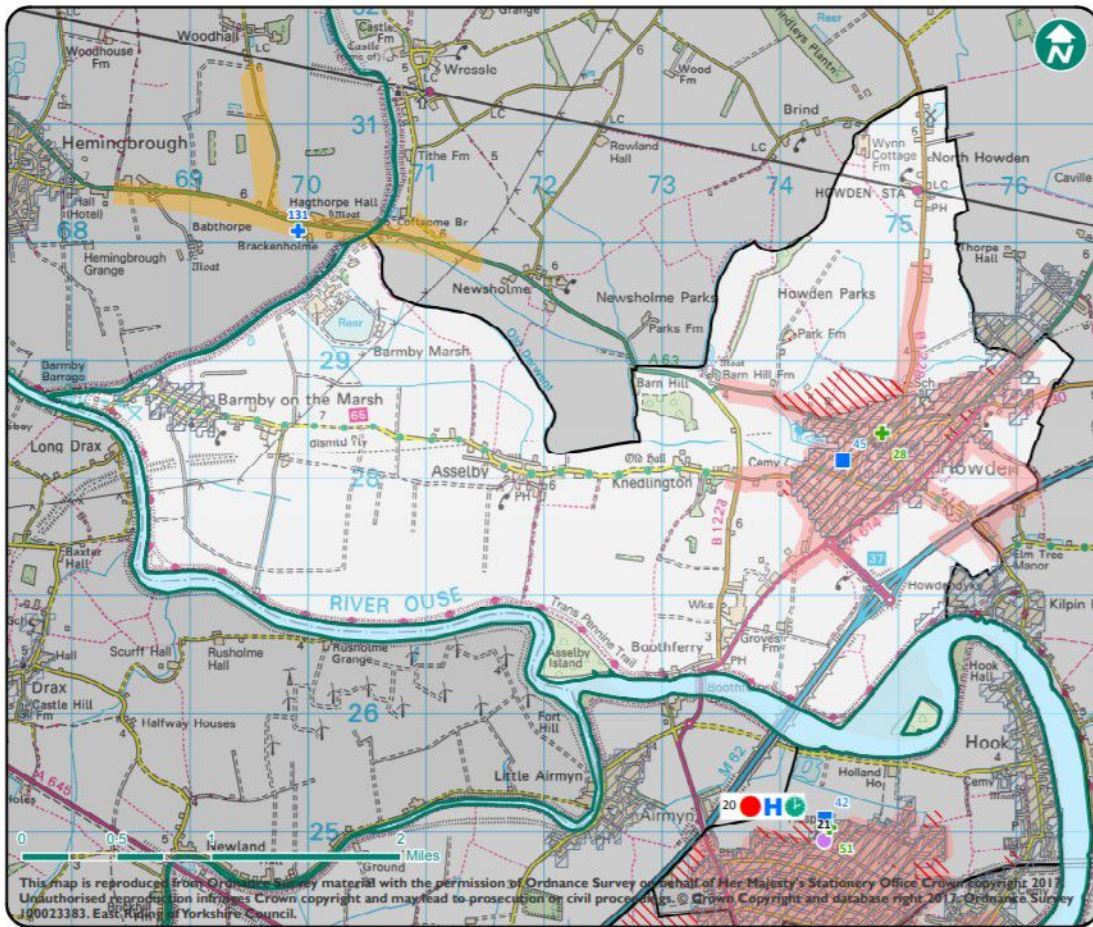
Health Services

- Accident and Emergency
- H Urgent Care Centre
- Out of Hours
- Independent
- HEYT
- 8-8 Centre (Planned Care)
- Humber FT
- York Teaching Hospital FT
- North Lincolnshire and Goole FT
- CHCP Office location
- CCG Office Location
- GP Walk-In Service
- Health Trainers

Boundaries

- ▨ Built Up Area
- ▨ Strategic Housing Land Availability Assessment (SHLAA)
- East Riding Pharmacy - 1 Mile Coverage
- Out of Area Pharmacy - 1 Mile Coverage
- Ward
- Local Authority

Current Service Provision - Howden



GPs and Pharmacies

- Branch
- Branch, Dispensing
- Main
- Main, Dispensing
- Pharmacies
- Out of Area Pharmacies

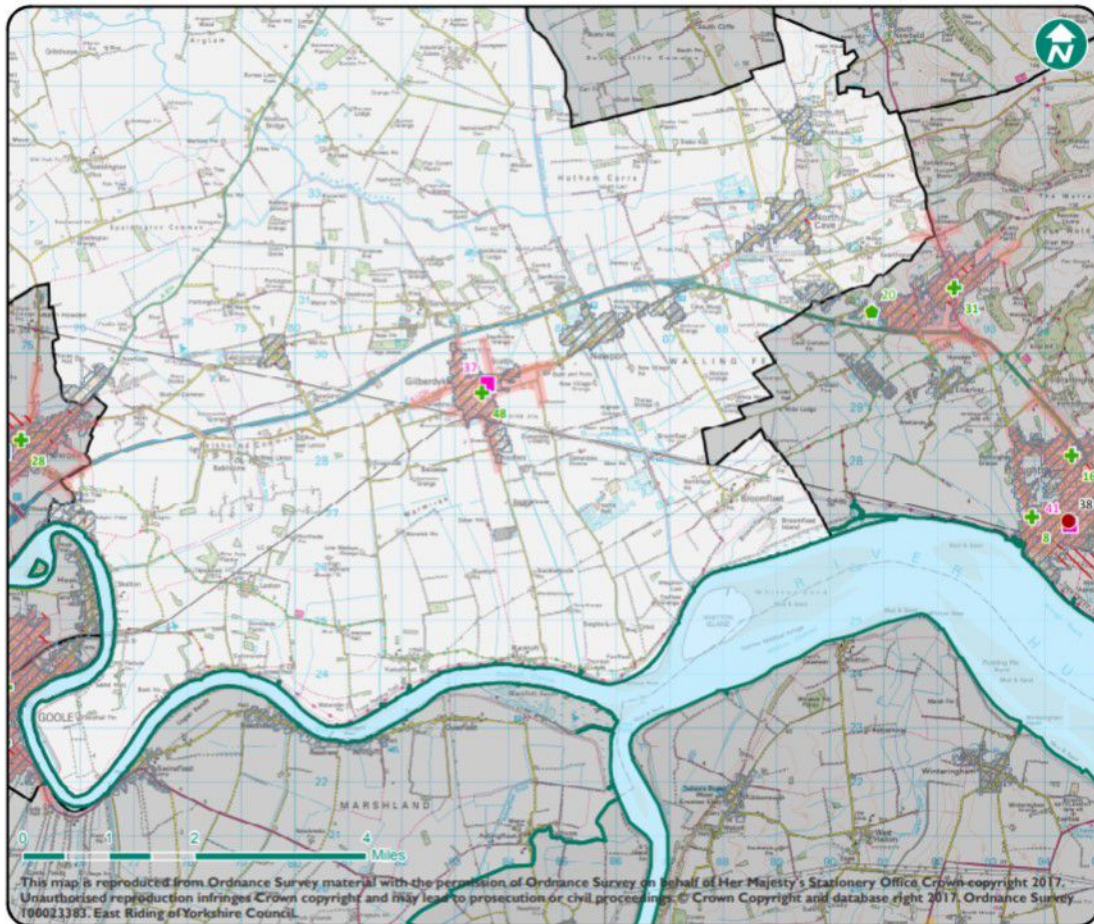
Health Services

- Accident and Emergency
- Urgent Care Centre
- Out of Hours
- Independent
- HEYT
- 8-8 Centre (Planned Care)
- Humber FT
- York Teaching Hospital FT
- North Lincolnshire and Goole FT
- CHCP Office location
- CCG Office Location
- GP Walk-In Service
- Health Trainers

Boundaries

- Built Up Area
- Strategic Housing Land Availability Assessment (SHLAA)
- East Riding Pharmacy - 1 Mile Coverage
- Out of Area Pharmacy - 1 Mile Coverage
- Ward
- Local Authority

Current Service Provision - Howdenshire South



GPs and Pharmacies

- Branch
- Branch, Dispensing
- Main
- Main, Dispensing
- + Pharmacies
- + Out of Area Pharmacies

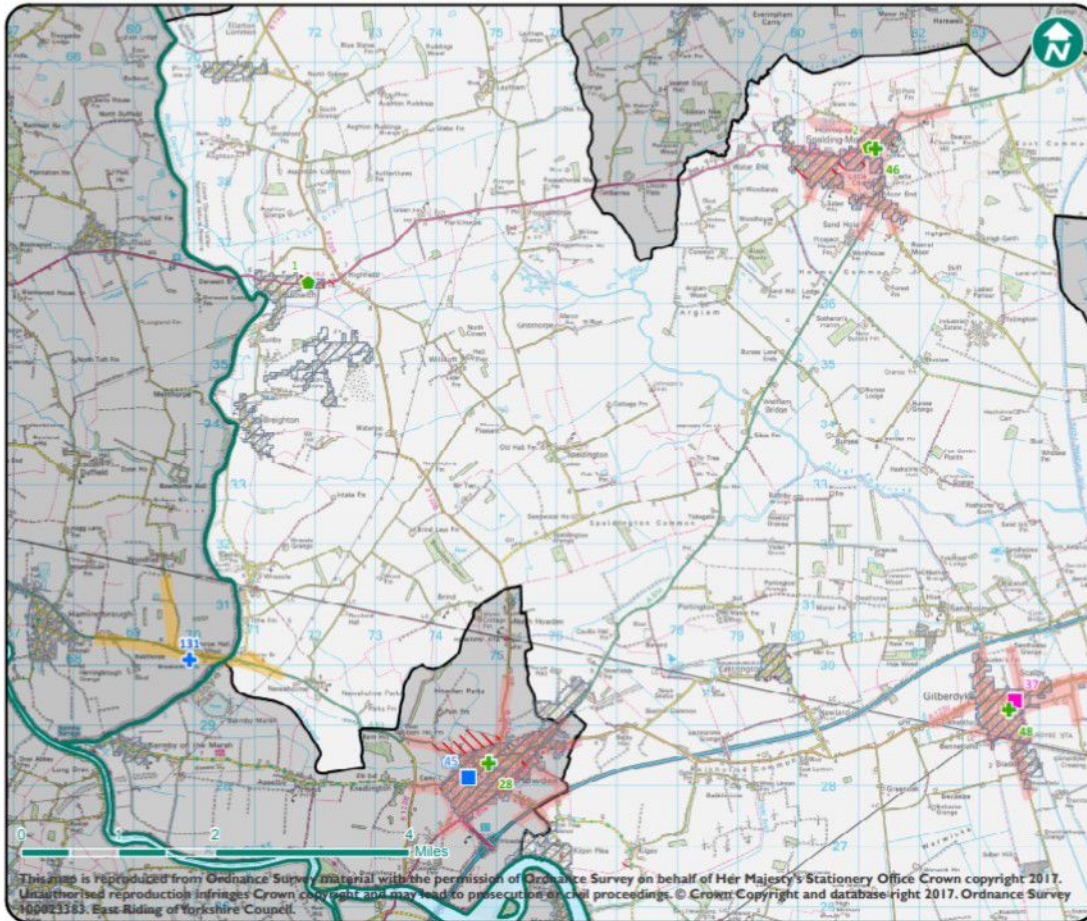
Health Services

- + Accident and Emergency
- H Urgent Care Centre
- Out of Hours
- Independent
- HEYT
- 8-8 Centre (Planned Care)
- Humber FT
- York Teaching Hospital FT
- North Lincolnshire and Goole FT
- CHCP Office location
- CCG Office Location
- GP Walk-In Service
- Health Trainers

Boundaries

- Built Up Area
- Strategic Housing Land Availability Assessment (SHLAA)
- East Riding Pharmacy - 1 Mile Coverage
- Out of Area Pharmacy - 1 Mile Coverage
- Ward
- Local Authority

Current Service Provision - Howdenshire North



GPs and Pharmacies

- Branch
- Branch, Dispensing
- Main
- Main, Dispensing
- Pharmacies
- Out of Area Pharmacies

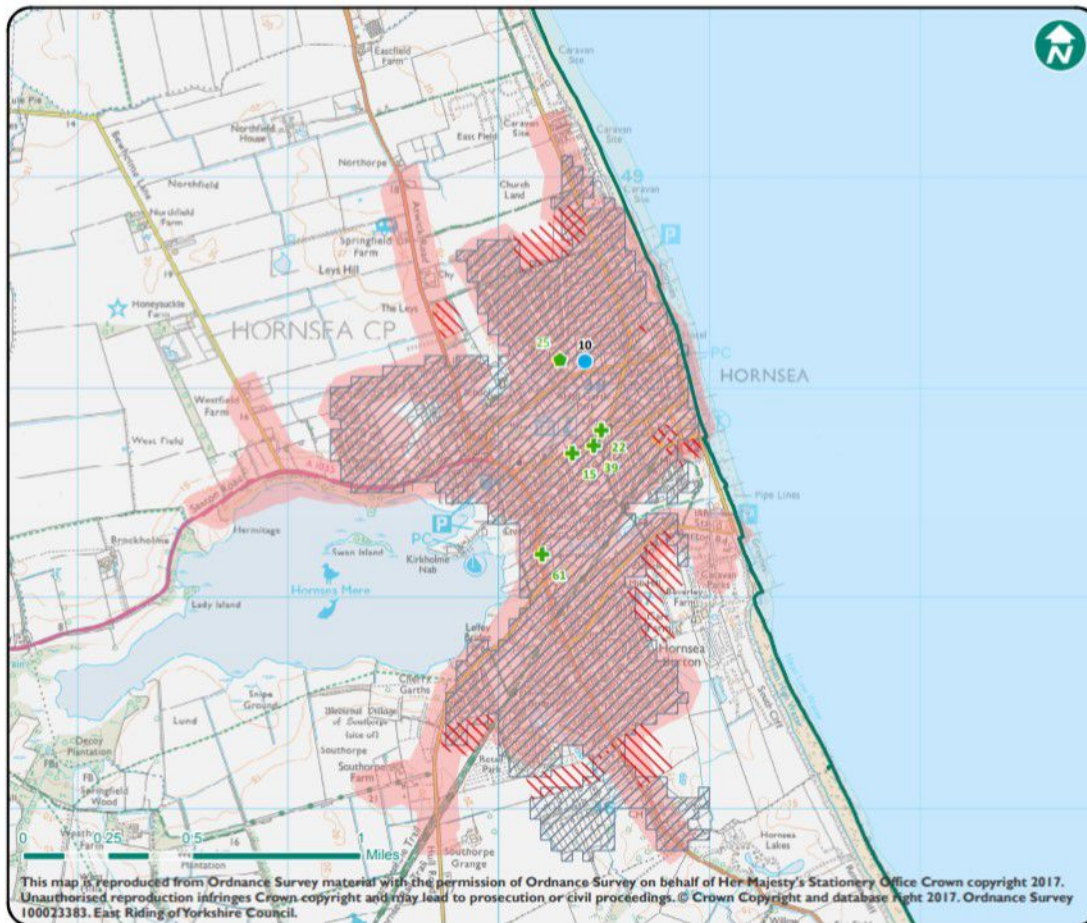
Health Services

- Accident and Emergency
- Urgent Care Centre
- Out of Hours
- Independent
- HEYT
- 8-8 Centre (Planned Care)
- Humber FT
- York Teaching Hospital FT
- North Lincolnshire and Goole FT
- CHCP Office location
- CCG Office Location
- GP Walk-In Service
- Health Trainers

Boundaries

- Built Up Area
- Strategic Housing Land Availability Assessment (SHLAA)
- East Riding Pharmacy - 1 Mile Coverage
- Out of Area Pharmacy - 1 Mile Coverage
- Ward
- Local Authority

Current Service Provision - Hornsea



GP's and Pharmacies

- Branch
- Branch, Dispensing
- Main
- Main, Dispensing
- Pharmacies
- Out of Area Pharmacies

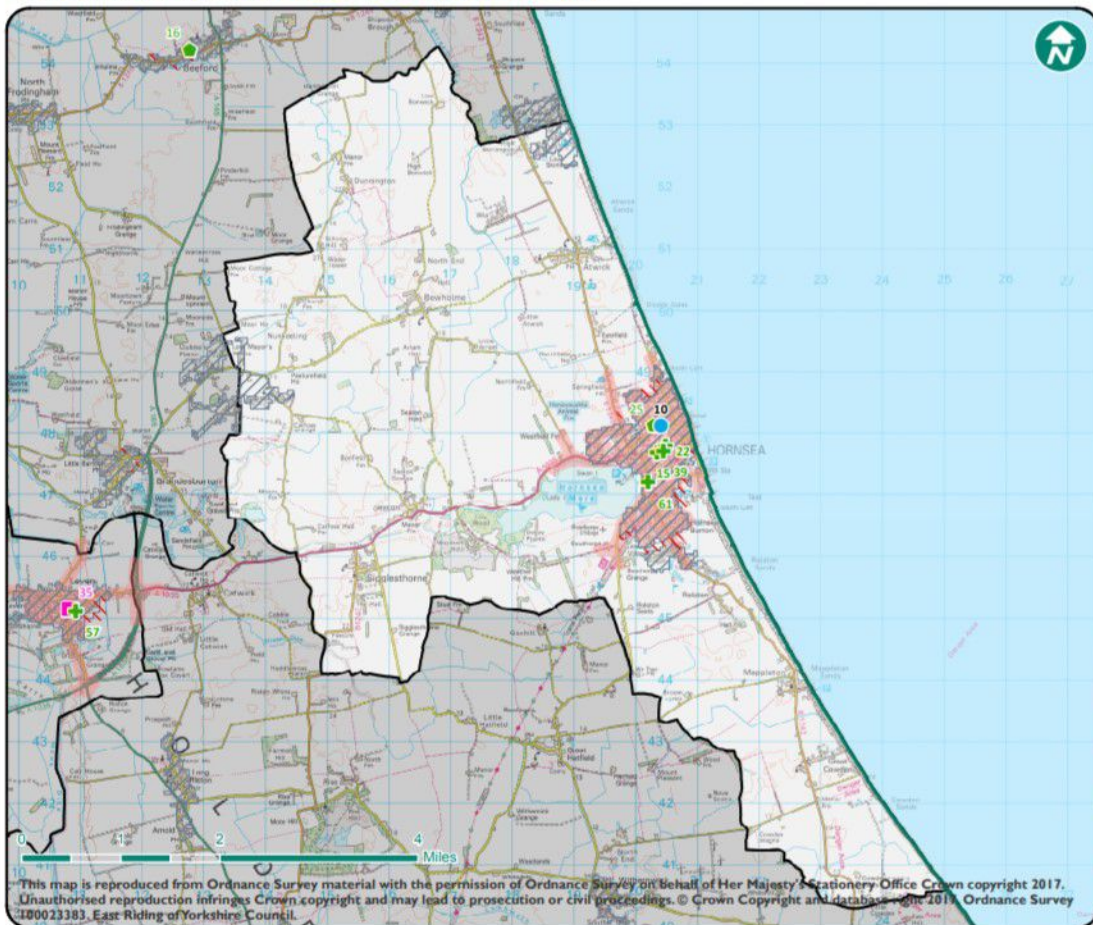
Health Services

- Accident and Emergency
- Urgent Care Centre
- Out of Hours
- Independent
- HEYT
- 8-8 Centre (Planned Care)
- Humber FT
- York Teaching Hospital FT
- North Lincolnshire and Goole FT
- CHCP Office location
- CCG Office Location
- GP Walk-In Service
- Health Trainers

Boundaries

- Built Up Area
- Strategic Housing Land Availability Assessment (SHLAA)
- East Riding Pharmacy - 1 Mile Coverage
- Out of Area Pharmacy - 1 Mile Coverage
- Ward
- Local Authority

Current Service Provision - North Holderness



GP's and Pharmacies

- Branch
- Branch, Dispensing
- Main
- Main, Dispensing
- ✚ Pharmacies
- ✚ Out of Area Pharmacies

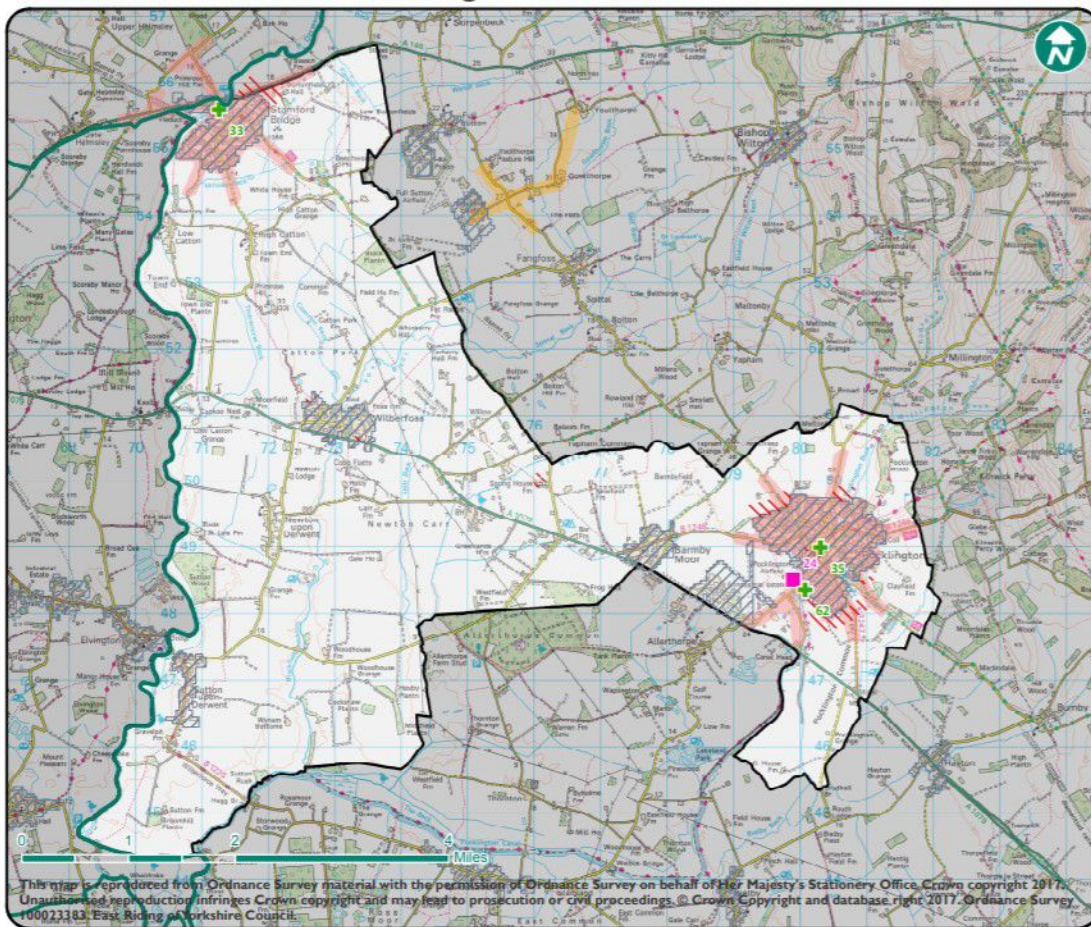
Health Services

- ✚ Accident and Emergency
- H Urgent Care Centre
- Out of Hours
- Independent
- HEYT
- 8-8 Centre (Planned Care)
- Humber FT
- York Teaching Hospital FT
- North Lincolnshire and Goole FT
- CHCP Office location
- CCG Office Location
- GP Walk-In Service
- Health Trainers

Boundaries

- ▨ Built Up Area
- ▨ Strategic Housing Land Availability Assessment (SHLAA)
- East Riding Pharmacy - 1 Mile Coverage
- Out of Area Pharmacy - 1 Mile Coverage
- Ward
- Local Authority

Current Service Provision - Pocklington Provincial



GP's and Pharmacies

- ◆ Branch
- ◆ Branch, Dispensing
- Main
- Main, Dispensing
- + Pharmacies
- + Out of Area Pharmacies

Health Services

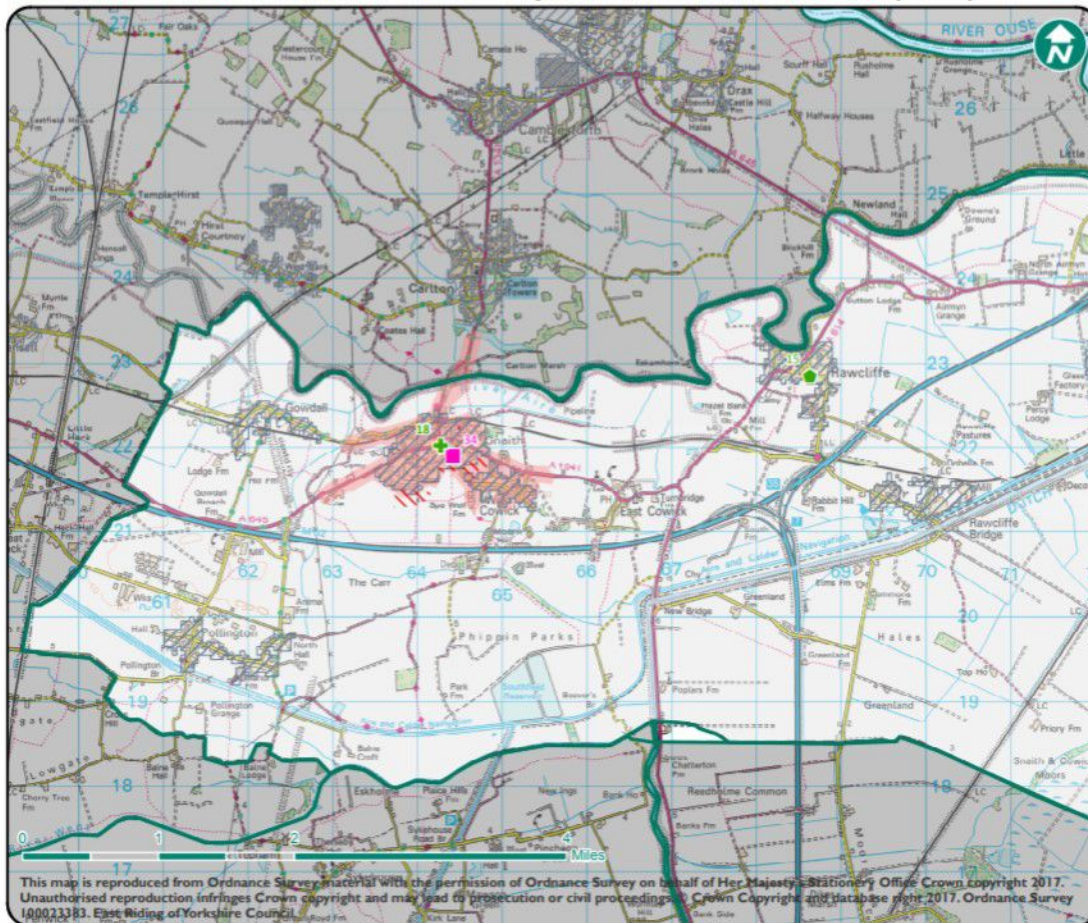
- + Accident and Emergency
- H Urgent Care Centre
- ◆ Out of Hours
- Independent
- HEYT
- 8-8 Centre (Planned Care)
- Humber FT
- York Teaching Hospital FT
- North Lincolnshire and Goole FT
- CHCP Office location
- CCG Office Location
- GP Walk-In Service
- Health Trainers

Boundaries

- Built Up Area
- Strategic Housing Land Availability Assessment (SHLAA)
- East Riding Pharmacy - 1 Mile Coverage
- Out of Area Pharmacy - 1 Mile Coverage
- Ward
- Local Authority

This map is reproduced from Ordnance Survey material with the permission of Ordnance Survey on behalf of Her Majesty's Stationary Office. Crown copyright 2017. Unauthorised reproduction infringes Crown copyright and may lead to prosecution or civil proceedings. © Crown Copyright and database right 2017. Ordnance Survey 100023383. East Riding of Yorkshire Council.

Current Service Provision - Snaith, Airmyn, Rawcliffe and Marshland (West)



GPs and Pharmacies

- Branch
- Branch, Dispensing
- Main
- Main, Dispensing
- ✚ Pharmacies
- ✚ Out of Area Pharmacies

Health Services

- ✚ Accident and Emergency
- H Urgent Care Centre
- Out of Hours
- Independent
- HEYT
- 8-8 Centre (Planned Care)
- Humber FT
- York Teaching Hospital FT
- North Lincolnshire and Goole FT
- CHCP Office location
- CCG Office Location
- GP Walk-In Service
- Health Trainers

Boundaries

- ▨ Built Up Area
- ▨ Strategic Housing Land Availability Assessment (SHLAA)
- East Riding Pharmacy - 1 Mile Coverage
- Out of Area Pharmacy - 1 Mile Coverage
- Ward
- Local Authority