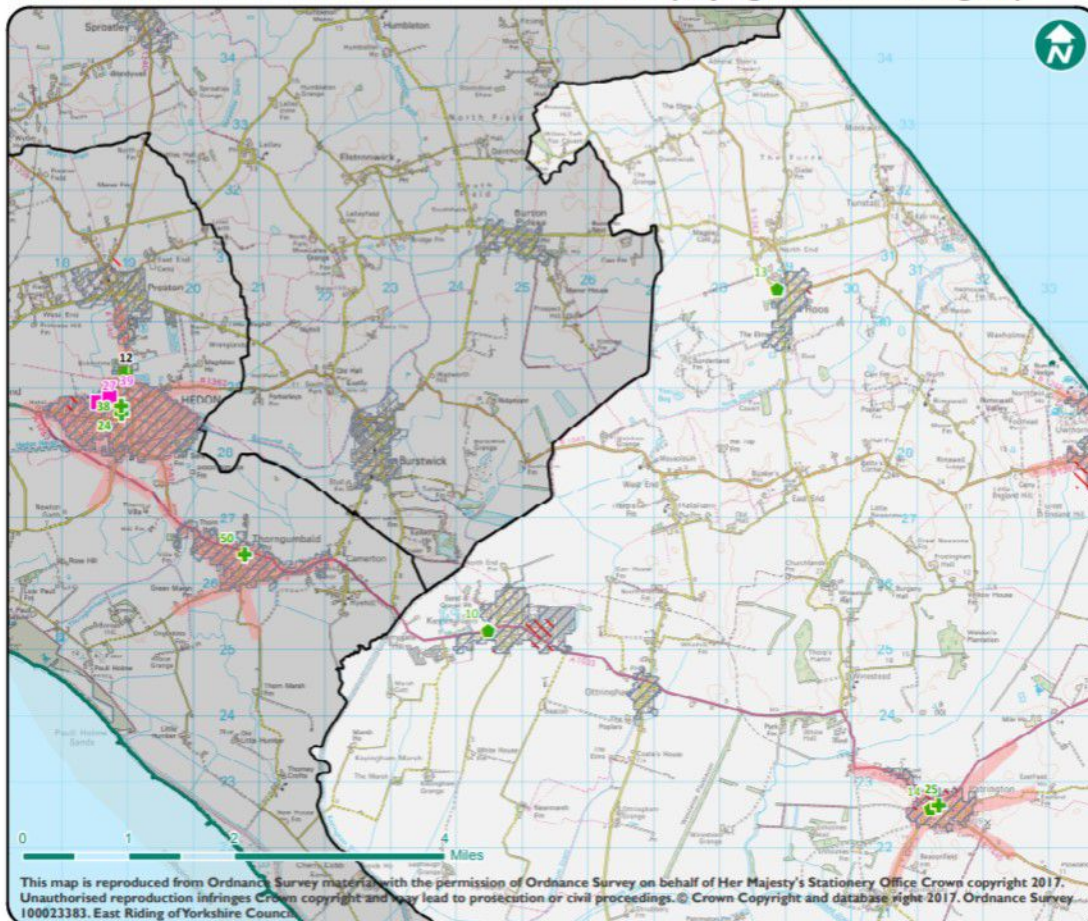


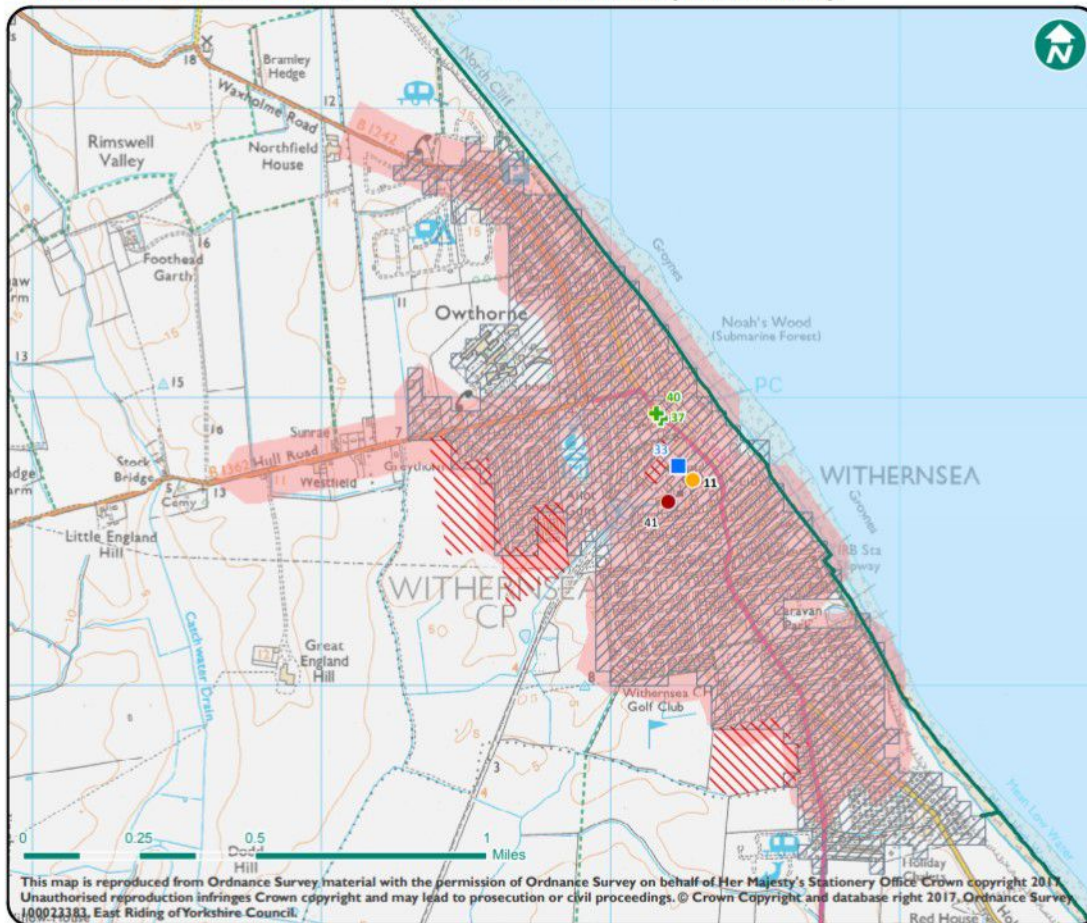
Current Service Provision - South East Holderness (Keyingham and Patrington)



- GPs and Pharmacies**
- Branch
 - Branch, Dispensing
 - Main
 - Main, Dispensing
 - ✚ Pharmacies
 - ✚ Out of Area Pharmacies
- Health Services**
- ✚ Accident and Emergency
 - H Urgent Care Centre
 - Out of Hours
 - Independent
 - HEYT
 - 8-8 Centre (Planned Care)
 - Humber FT
 - York Teaching Hospital FT
 - North Lincolnshire and Goole FT
 - CHCP Office location
 - CCG Office Location
 - GP Walk-In Service
 - Health Trainers
- Boundaries**
- ▨ Built Up Area
 - ▨ Strategic Housing Land Availability Assessment (SHLAA)
 - ▨ East Riding Pharmacy - 1 Mile Coverage
 - ▨ Out of Area Pharmacy - 1 Mile Coverage
 - Ward
 - Local Authority

This map is reproduced from Ordnance Survey material with the permission of Ordnance Survey on behalf of Her Majesty's Stationery Office Crown copyright 2017. Unauthorised reproduction infringes Crown copyright and may lead to prosecution or civil proceedings. © Crown Copyright and database right 2017. Ordnance Survey 100023383. East Riding of Yorkshire Council

Current Service Provision - South East Holderness (Withernsea)



GPs and Pharmacies

- Branch
- Branch, Dispensing
- Main
- Main, Dispensing
- ✚ Pharmacies
- ✚ Out of Area Pharmacies

Health Services

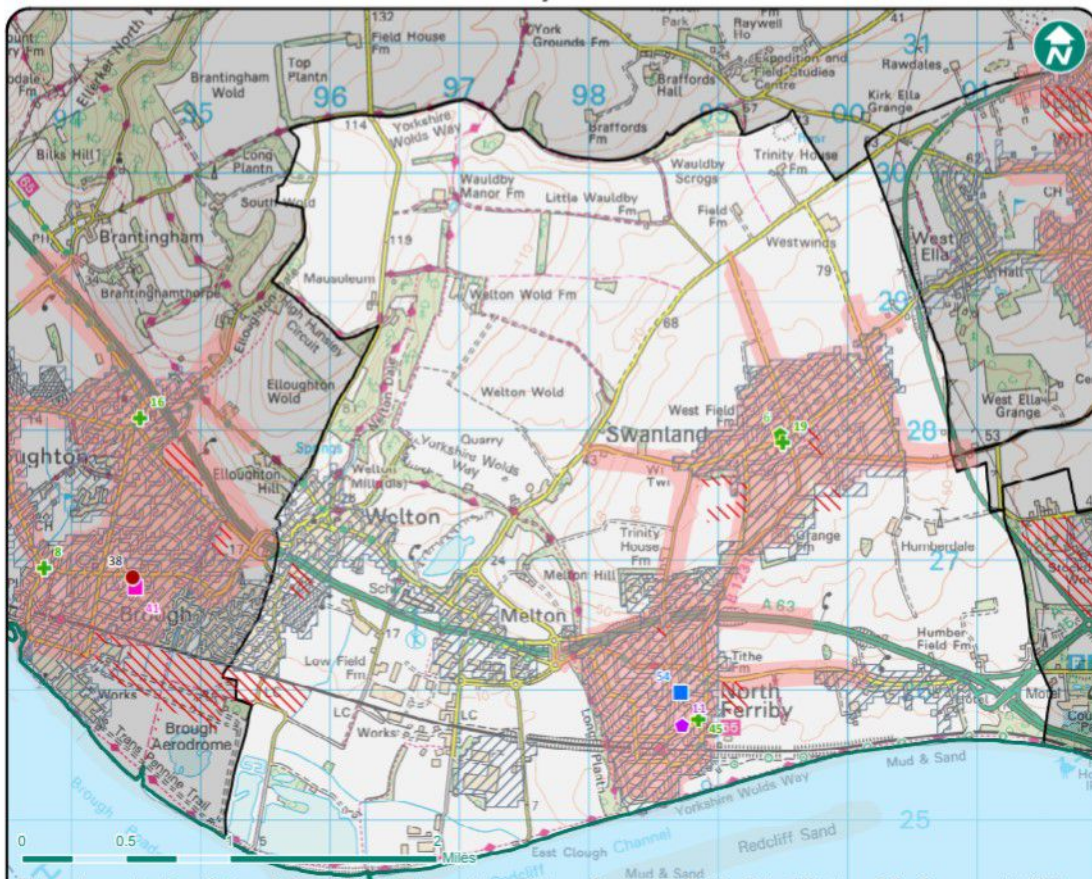
- ✚ Accident and Emergency
- H Urgent Care Centre
- Out of Hours
- Independent
- HEYT
- 8-8 Centre (Planned Care)
- Humber FT
- York Teaching Hospital FT
- North Lincolnshire and Goole FT
- CHCP Office location
- CCG Office Location
- GP Walk-In Service
- Health Trainers

Boundaries

- ▨ Built Up Area
- ▨ Strategic Housing Land Availability Assessment (SHLAA)
- East Riding Pharmacy - 1 Mile Coverage
- Out of Area Pharmacy - 1 Mile Coverage
- Ward
- Local Authority

This map is reproduced from Ordnance Survey material with the permission of Ordnance Survey on behalf of Her Majesty's Stationery Office Crown copyright 2017. Unauthorised reproduction infringes Crown copyright and may lead to prosecution or civil proceedings. © Crown Copyright and database right 2017, Ordnance Survey, 100022383, East Riding of Yorkshire Council.

Current Service Provision - South Hunsley



GP's and Pharmacies

- Branch
- Branch, Dispensing
- Main
- Main, Dispensing
- + Pharmacies
- + Out of Area Pharmacies

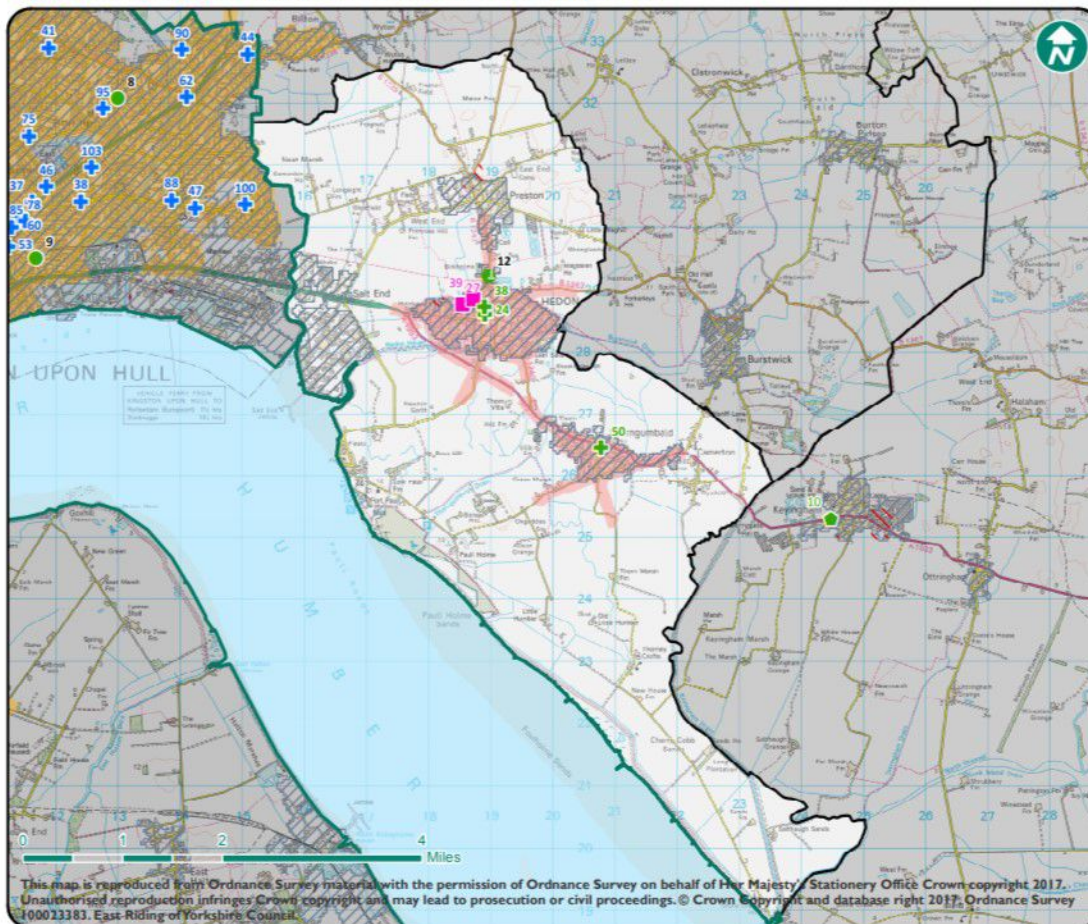
Health Services

- + Accident and Emergency
- H Urgent Care Centre
- Out of Hours
- Independent
- HEYT
- 8-8 Centre (Planned Care)
- Humber FT
- York Teaching Hospital FT
- North Lincolnshire and Goole FT
- CHCP Office location
- CCG Office Location
- GP Walk-In Service
- Health Trainers

Boundaries

- Built Up Area
- Strategic Housing Land Availability Assessment (SHLAA)
- East Riding Pharmacy - 1 Mile Coverage
- Out of Area Pharmacy - 1 Mile Coverage
- Ward
- Local Authority

Current Service Provision - South West Holderness



GP's and Pharmacies

- Branch
- Branch, Dispensing
- Main
- Main, Dispensing
- Pharmacies
- Out of Area Pharmacies

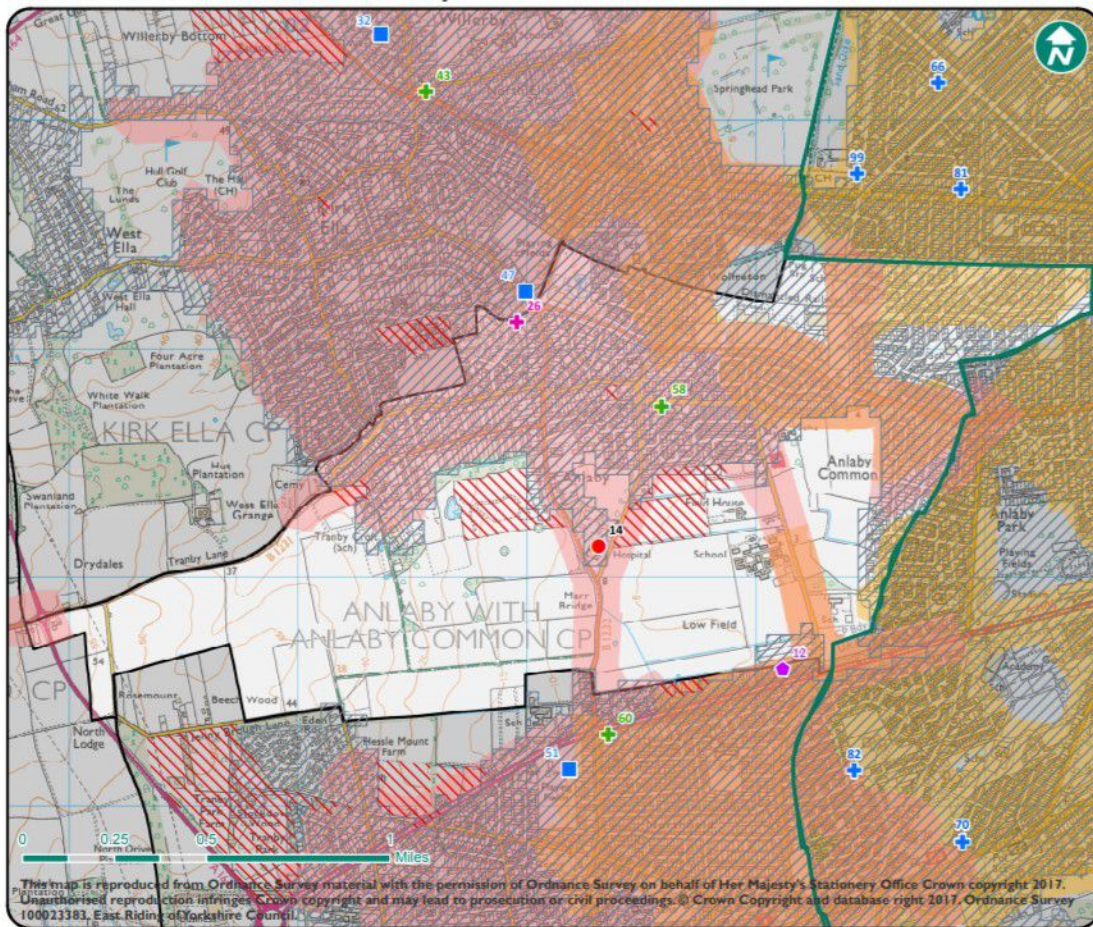
Health Services

- Accident and Emergency
- Urgent Care Centre
- Out of Hours
- Independent
- HEYT
- 8-8 Centre (Planned Care)
- Humber FT
- York Teaching Hospital FT
- North Lincolnshire and Goole FT
- CHCP Office location
- CCG Office Location
- GP Walk-In Service
- Health Trainers

Boundaries

- ▨ Built Up Area
- ▨ Strategic Housing Land Availability Assessment (SHLAA)
- ▨ East Riding Pharmacy - 1 Mile Coverage
- ▨ Out of Area Pharmacy - 1 Mile Coverage
- Ward
- Local Authority

Current Service Provision - Tranby



GPs and Pharmacies

- Branch
- Branch, Dispensing
- Main
- Main, Dispensing
- + Pharmacies
- + Out of Area Pharmacies
- + Distance Selling Pharmacies

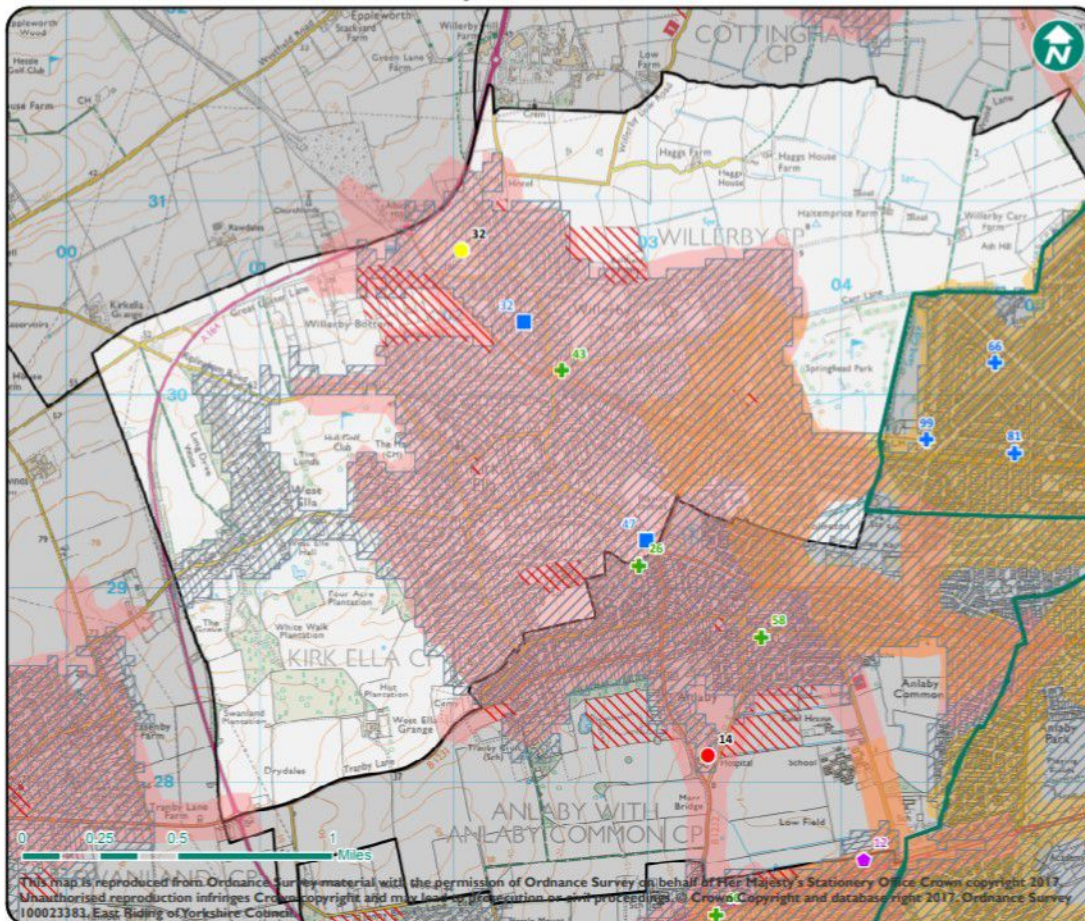
Health Services

- + Accident and Emergency
- H Urgent Care Centre
- ! Out of Hours
- Independent
- HEYT
- 8-8 Centre (Planned Care)
- Humber FT
- York Teaching Hospital FT
- North Lincolnshire and Goole FT
- CHCP Office location
- CCG Office Location
- GP Walk-In Service
- Health Trainers

Boundaries

- Built Up Area
- Strategic Housing Land Availability Assessment (SHLAA)
- East Riding Pharmacy - 1 Mile Coverage
- Out of Area Pharmacy - 1 Mile Coverage
- Ward
- Local Authority

Current Service Provision - Willerby and Kirk Ella



GPs and Pharmacies

- Branch
- Branch, Dispensing
- Main
- Main, Dispensing
- + Pharmacies
- + Out of Area Pharmacies

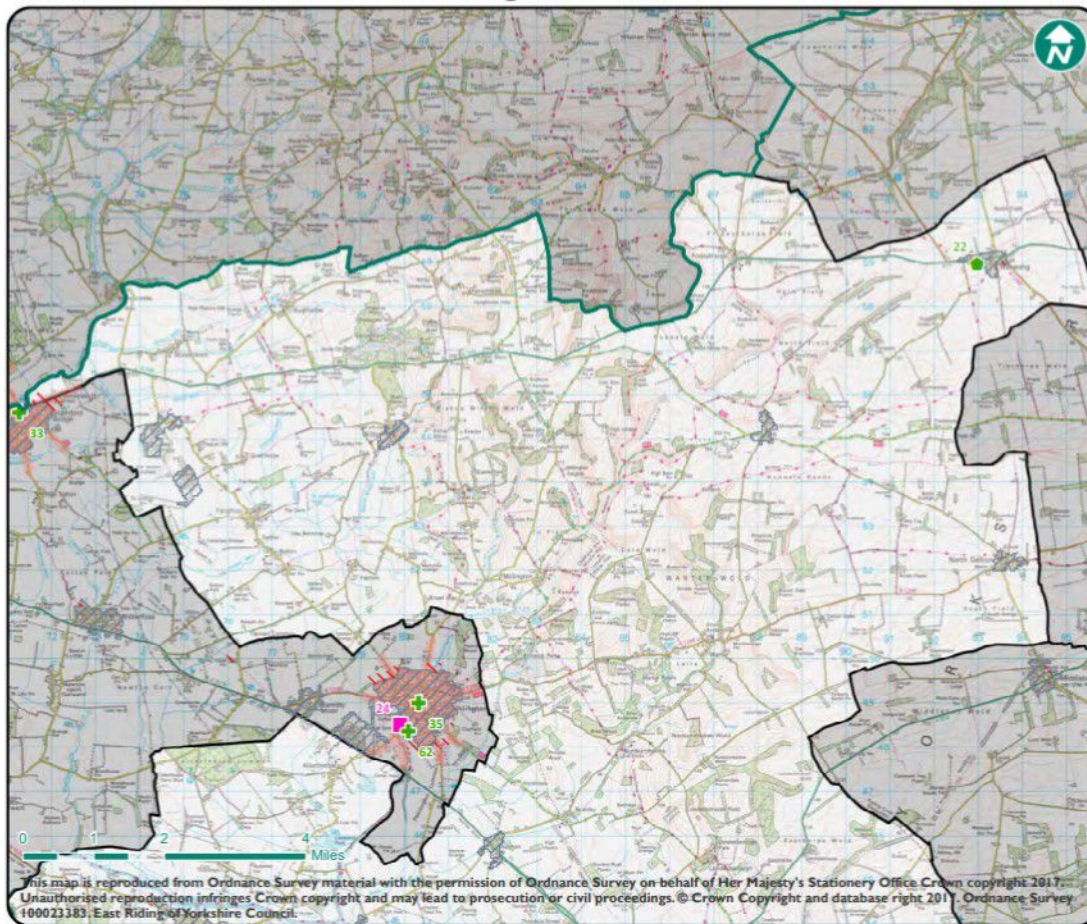
Health Services

- + Accident and Emergency
- H Urgent Care Centre
- Out of Hours
- Independent
- HEYT
- 8-8 Centre (Planned Care)
- Humber FT
- York Teaching Hospital FT
- North Lincolnshire and Goole FT
- CHCP Office location
- CCG Office Location
- GP Walk-In Service
- Health Trainers

Boundaries

- Built Up Area
- Strategic Housing Land Availability Assessment (SHLAA)
- East Riding Pharmacy - 1 Mile Coverage
- Out of Area Pharmacy - 1 Mile Coverage
- Ward
- Local Authority

Current Service Provision - Wolds Weighon North



GPs and Pharmacies

- Branch
- Branch, Dispensing
- Main
- Main, Dispensing
- ✚ Pharmacies
- ✚ Out of Area Pharmacies

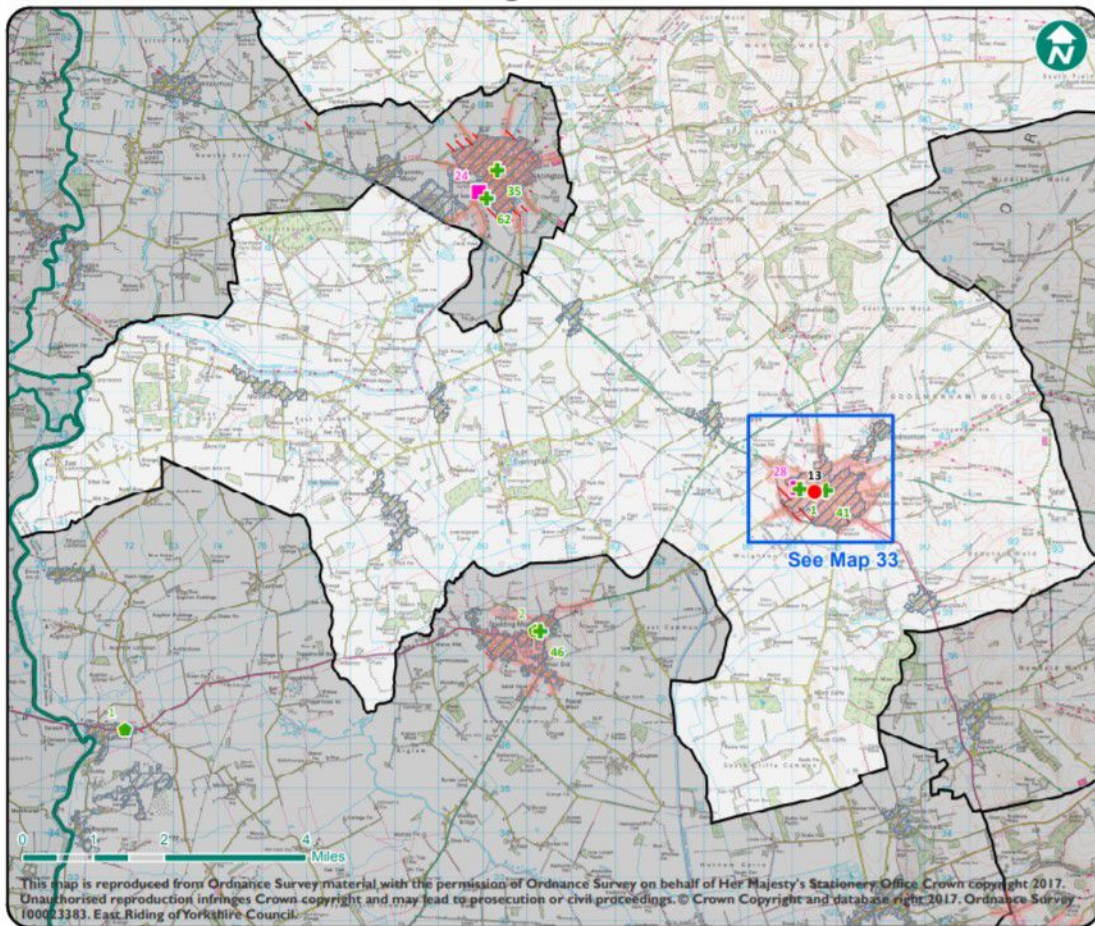
Health Services

- ✚ Accident and Emergency
- H Urgent Care Centre
- Out of Hours
- Independent
- HEYT
- 8-8 Centre (Planned Care)
- Humber FT
- York Teaching Hospital FT
- North Lincolnshire and Goole FT
- CHCP Office location
- CCG Office Location
- GP Walk-In Service
- Health Trainers

Boundaries

- ▨ Built Up Area
- ▨ Strategic Housing Land Availability Assessment (SHLAA)
- East Riding Pharmacy - 1 Mile Coverage
- Out of Area Pharmacy - 1 Mile Coverage
- Ward
- Local Authority

Current Service Provision - Wolds Weighton South



GPs and Pharmacies

- Branch
- Branch, Dispensing
- Main
- Main, Dispensing
- + Pharmacies
- + Out of Area Pharmacies

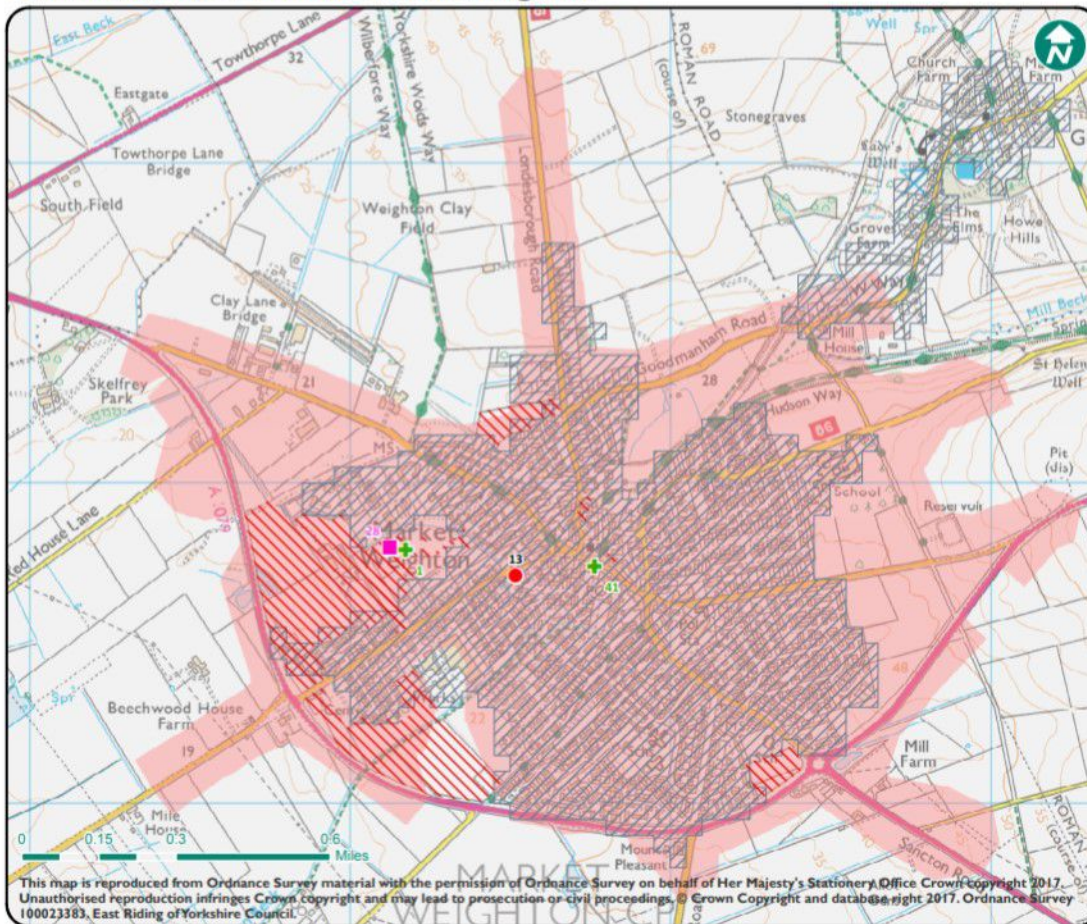
Health Services

- + Accident and Emergency
- H Urgent Care Centre
- Out of Hours
- Independent
- HEYT
- 8-8 Centre (Planned Care)
- Humber FT
- York Teaching Hospital FT
- North Lincolnshire and Goole FT
- CHCP Office location
- CCG Office Location
- GP Walk-In Service
- Health Trainers

Boundaries

- Built Up Area
- Strategic Housing Land Availability Assessment (SHLAA)
- East Riding Pharmacy - 1 Mile Coverage
- Out of Area Pharmacy - 1 Mile Coverage
- Ward
- Local Authority

Current Service Provision - Market Weighton



GPs and Pharmacies

- Branch
- Branch, Dispensing
- Main
- Main, Dispensing
- + Pharmacies
- + Out of Area Pharmacies

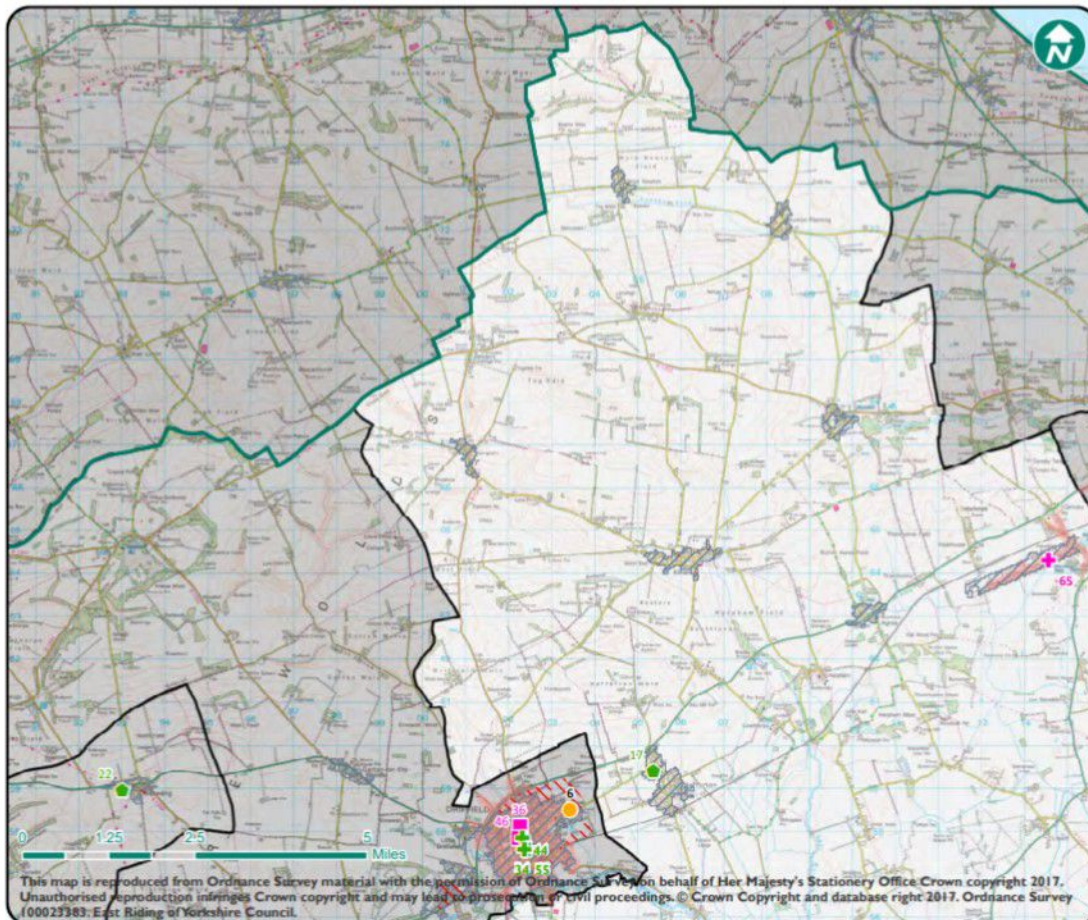
Health Services

- + Accident and Emergency
- H Urgent Care Centre
- Out of Hours
- Independent
- HEYT
- 8-8 Centre (Planned Care)
- Humber FT
- York Teaching Hospital FT
- North Lincolnshire and Goole FT
- CHCP Office location
- CCG Office Location
- GP Walk-In Service
- Health Trainers

Boundaries

- Built Up Area
- Strategic Housing Land Availability Assessment (SHLAA)
- East Riding Pharmacy - 1 Mile Coverage
- Out of Area Pharmacy - 1 Mile Coverage
- Ward
- Local Authority

Current Service Provision - East Wolds and Coastal Central



GPs and Pharmacies

- Branch
- Branch, Dispensing
- Main
- Main, Dispensing
- + Pharmacies
- + Out of Area Pharmacies
- + Distance Selling Pharmacies

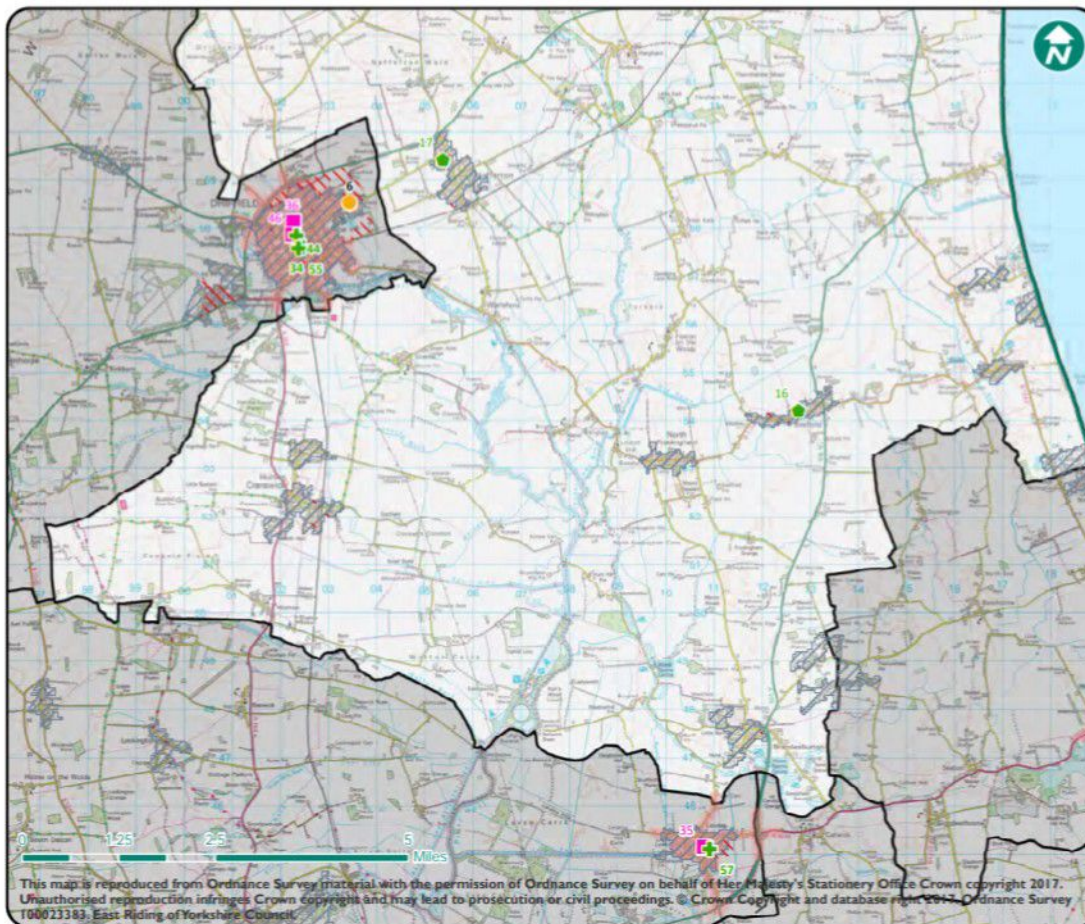
Health Services

- + Accident and Emergency
- H Urgent Care Centre
- Out of Hours
- Independent
- HEYT
- 8-8 Centre (Planned Care)
- Humber FT
- York Teaching Hospital FT
- North Lincolnshire and Goole FT
- CHCP Office location
- CCG Office Location
- GP Walk-In Service
- Health Trainers

Boundaries

- ▨ Built Up Area
- ▨ Strategic Housing Land Availability Assessment (SHLAA)
- East Riding Pharmacy - 1 Mile Coverage
- Out of Area Pharmacy - 1 Mile Coverage
- Ward
- Local Authority

Current Service Provision - East Wolds and Coastal South



GPs and Pharmacies

- Branch
- Branch, Dispensing
- Main
- Main, Dispensing
- + Pharmacies
- + Out of Area Pharmacies

Health Services

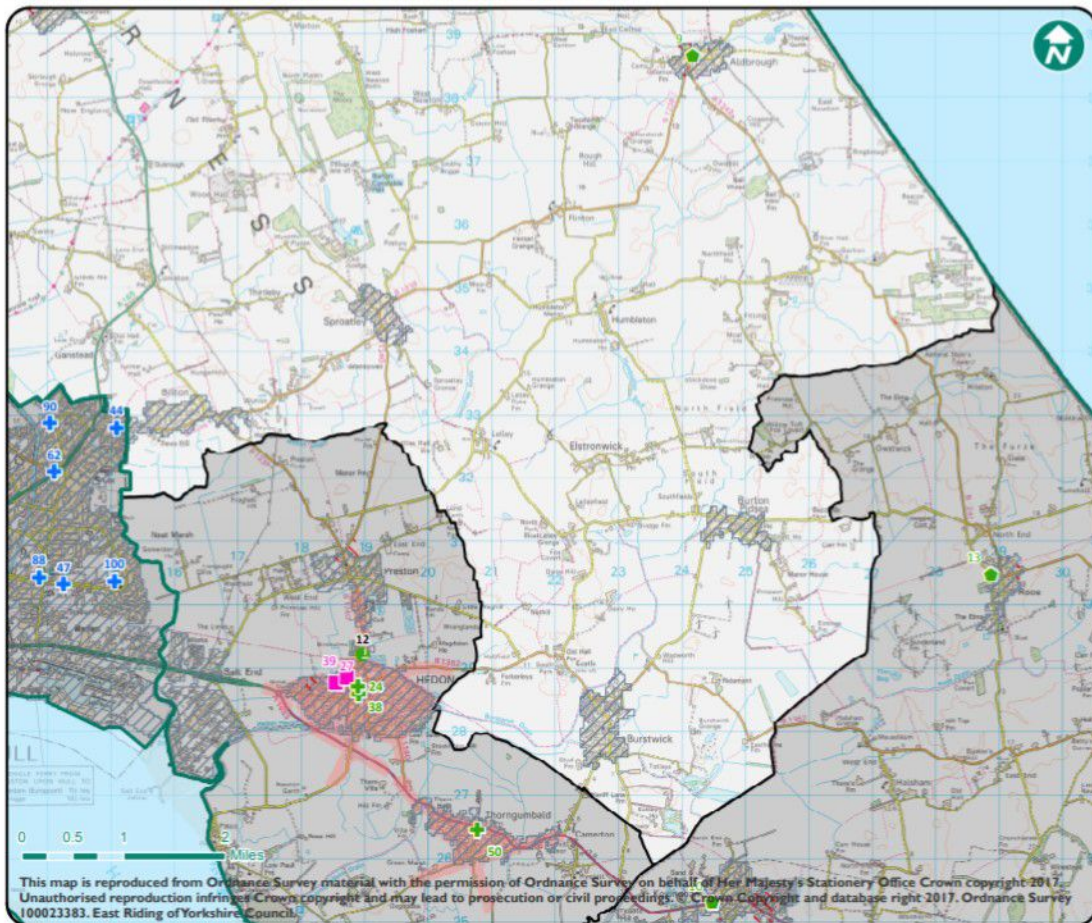
- + Accident and Emergency
- H Urgent Care Centre
- Out of Hours
- Independent
- HEYT
- 8-8 Centre (Planned Care)
- Humber FT
- York Teaching Hospital FT
- North Lincolnshire and Goole FT
- CHCP Office location
- CCG Office Location
- GP Walk-In Service
- Health Trainers

Boundaries

- Built Up Area
- Strategic Housing Land Availability Assessment (SHLAA)
- East Riding Pharmacy - 1 Mile Coverage
- Out of Area Pharmacy - 1 Mile Coverage
- Ward
- Local Authority

This map is reproduced from Ordnance Survey material with the permission of Ordnance Survey on behalf of Her Majesty's Stationery Office Crown copyright 2017. Unauthorised reproduction infringes Crown copyright and may lead to prosecution or civil proceedings. © Crown Copyright and database right 2017. Ordnance Survey 100023383. East Riding of Yorkshire Council.

Current Service Provision - Mid Holderness East



GPs and Pharmacies

- Branch
- Branch, Dispensing
- Main
- Main, Dispensing
- ✚ Pharmacies
- ✚ Out of Area Pharmacies

Health Services

- ✚ Accident and Emergency
- H Urgent Care Centre
- Out of Hours
- Independent
- HEYT
- 8-8 Centre (Planned Care)
- Humber FT
- York Teaching Hospital FT
- North Lincolnshire and Goole FT
- CHCP Office location
- CCG Office Location
- GP Walk-In Service
- Health Trainers

Boundaries

- ▨ Built Up Area
- ▨ Strategic Housing Land Availability Assessment (SHLAA)
- East Riding Pharmacy - 1 Mile Coverage
- Out of Area Pharmacy - 1 Mile Coverage
- Ward
- Local Authority