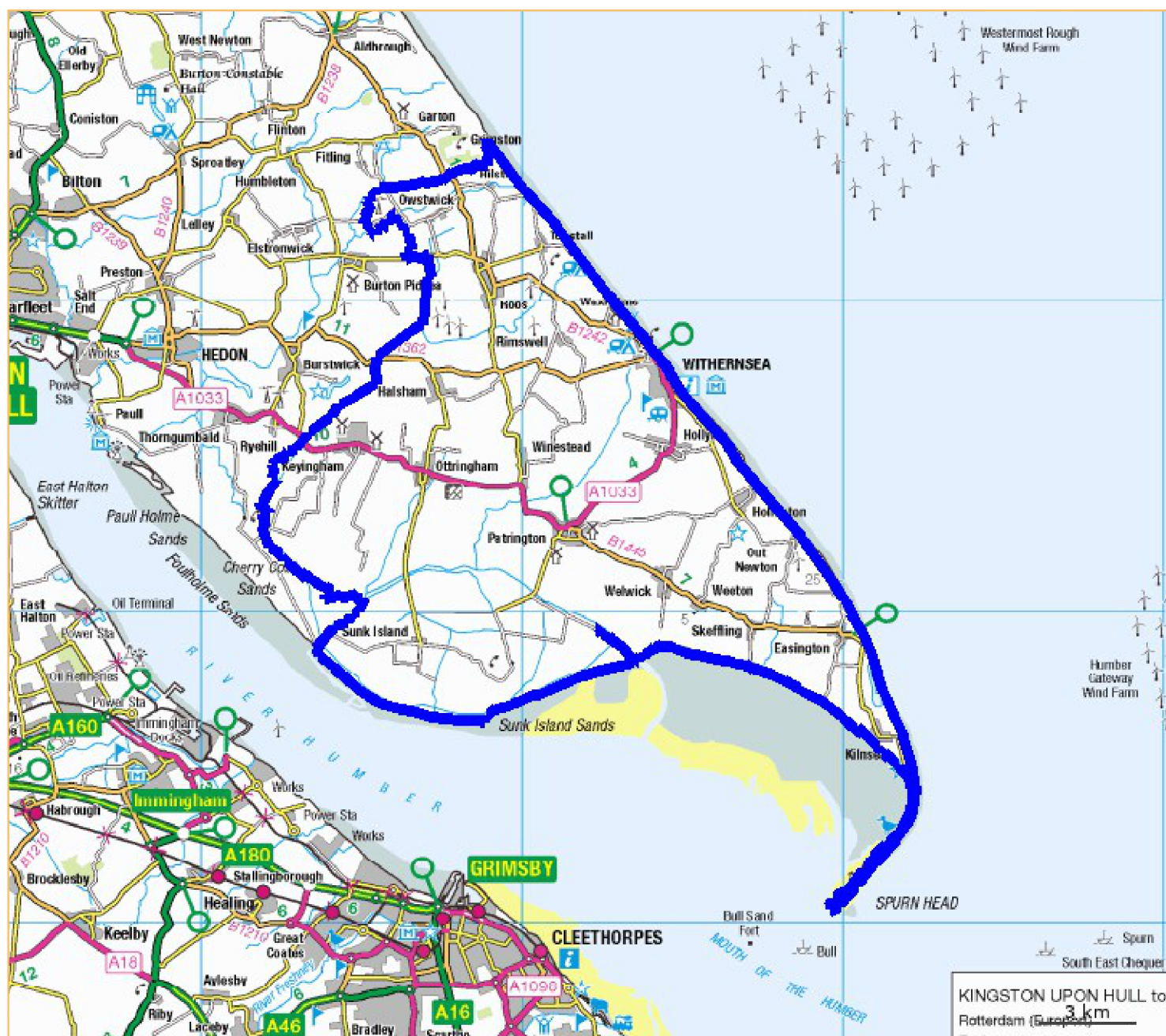




Report - Ward: South East Holderness, East Riding of Yorkshire

Presentation map



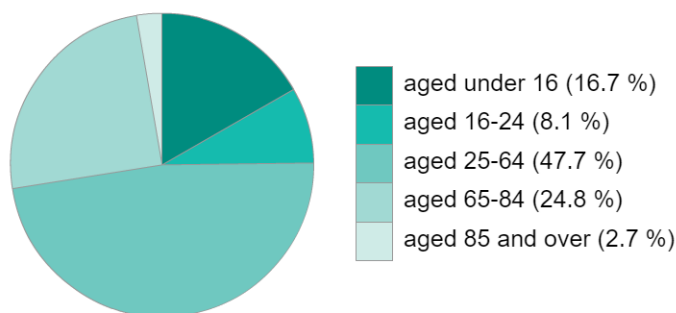
©PHE - © Crown copyright and database rights 2019, Ordnance Survey 100016969 - ONS © Crown Copyright 2018



Report - Ward: South East Holderness, East Riding of Yorkshire

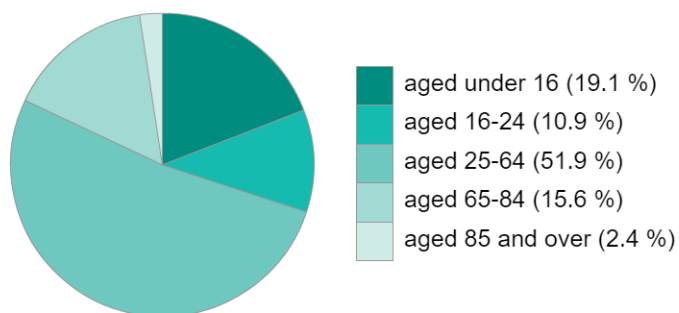
## Population

Population by age group, 2017  
Your selection



Source: ONS © Crown copyright 2018 - total: 15,054

Population by age group, 2017  
England



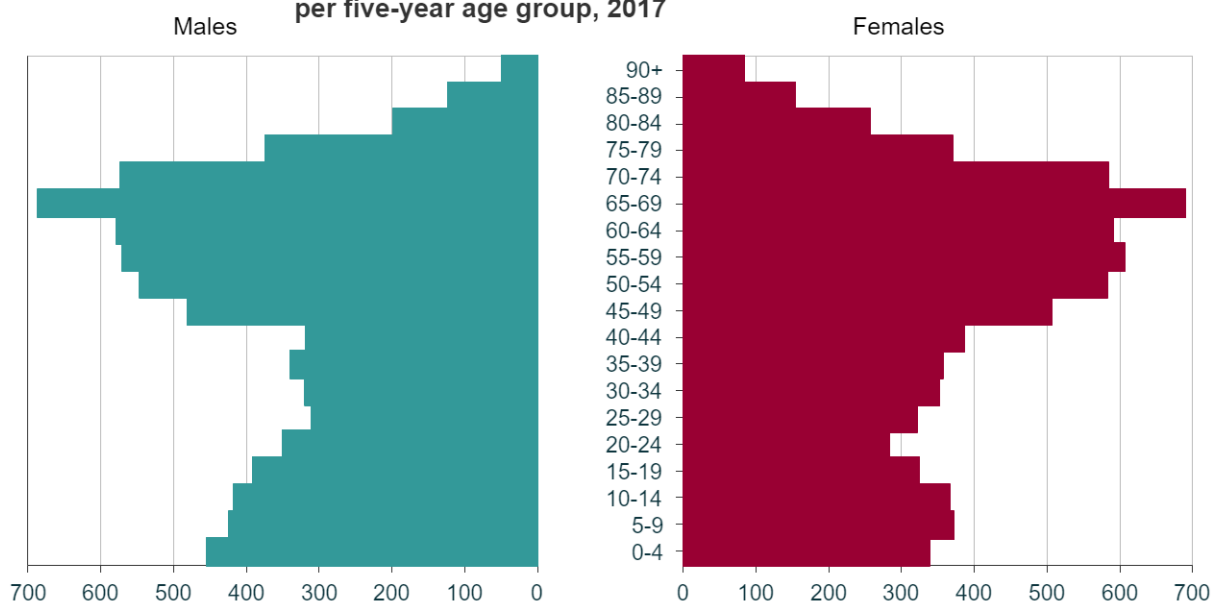
Source: ONS © Crown copyright 2018

Population by age group, 2017 numbers

Ages	South East Holderness, East Riding of Yorkshire	East Riding of Yorkshire (LTLA 2013)	East Riding of Yorkshire (UTLA 2013)	England
aged under 16	2,510	55,268	55,268	10,637,971
aged 16-24	1,217	29,241	29,241	6,057,265
aged 25-64	7,176	167,675	167,675	28,893,684
aged 65-84	3,740	75,513	75,513	8,678,455
aged 85 and over	411	10,364	10,364	1,352,056
Total	15,054	338,061	338,061	55,619,432

Source: ONS © Crown copyright 2018

Age pyramid for selection: male and female numbers  
per five-year age group, 2017



Source: ONS © Crown Copyright 2018



Report - Ward: South East Holderness, East Riding of Yorkshire

### Ethnicity & Language

#### Ethnicity & Language indicators, 2011, numbers

Indicator	South East Holderness, East Riding of Yorkshire	East Riding of Yorkshire (LTLA 2013)	East Riding of Yorkshire (UTLA 2013)	England
Black and Minority Ethnic (BME) Population	166	6,390	6,390	7,731,314
Population whose ethnicity is not 'White UK'	357	12,870	12,870	10,733,220
Population who cannot speak English well or at all	25	1,250	1,250	843,845

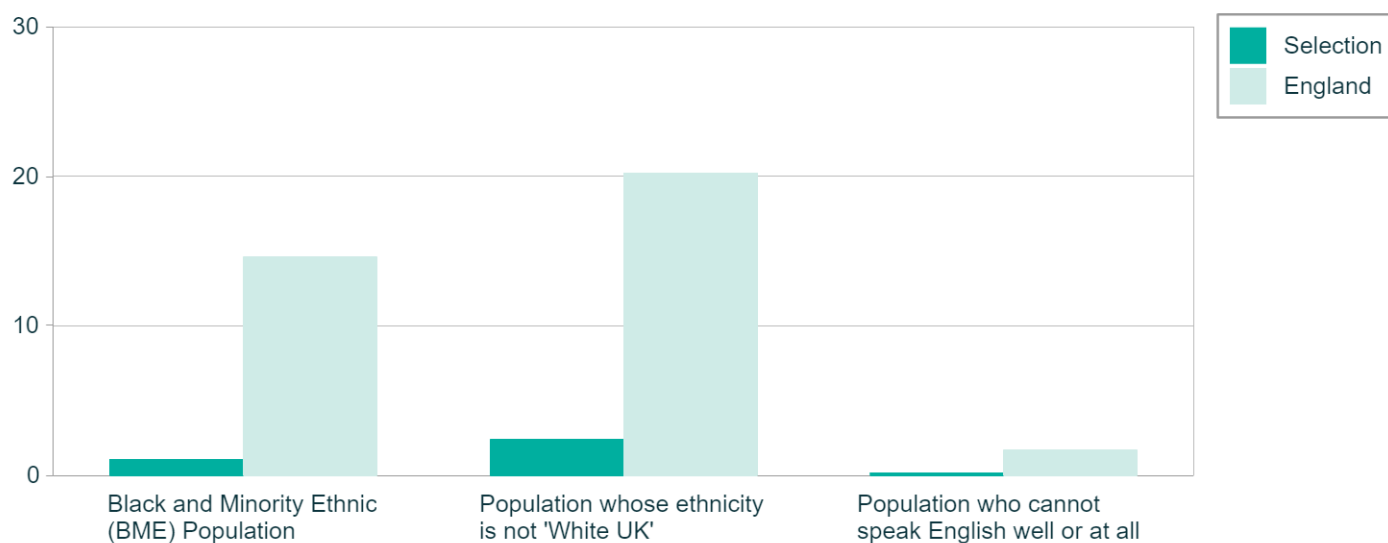
Source: ONS Census, 2011

#### Ethnicity & Language indicators, 2011, %

Indicator	South East Holderness, East Riding of Yorkshire	East Riding of Yorkshire (LTLA 2013)	East Riding of Yorkshire (UTLA 2013)	England
Black and Minority Ethnic (BME) Population	1.1	1.9	1.9	14.6
Population whose ethnicity is not 'White UK'	2.4	3.9	3.9	20.2
Population who cannot speak English well or at all	0.2	0.4	0.4	1.7

Source: ONS Census, 2011

#### Ethnicity & Language indicators, 2011, %, Selection



Source: ONS Census, 2011



## Report - Ward: South East Holderness, East Riding of Yorkshire

## Deprivation

## Indices of Deprivation, 2015, Score

Indicator	South East Holderness, East Riding of Yorkshire	East Riding of Yorkshire (LTLA 2013)	East Riding of Yorkshire (UTLA 2013)	England
IMD 2015 Score	31.2	15.8	15.8	21.8

Source: DCLG © Copyright 2015. Please see metadata for further guidance on how to interpret IMD score

## Indices of Deprivation, 2015, numbers

Indicator	South East Holderness, East Riding of Yorkshire	East Riding of Yorkshire (LTLA 2013)	East Riding of Yorkshire (UTLA 2013)	England
People living in means tested benefit households	2,937	36,589	36,589	7,790,220
Children living in income deprived households	621	7,282	7,282	2,016,120
People aged 60+ living in pension credit households	941	12,681	12,681	1,954,617

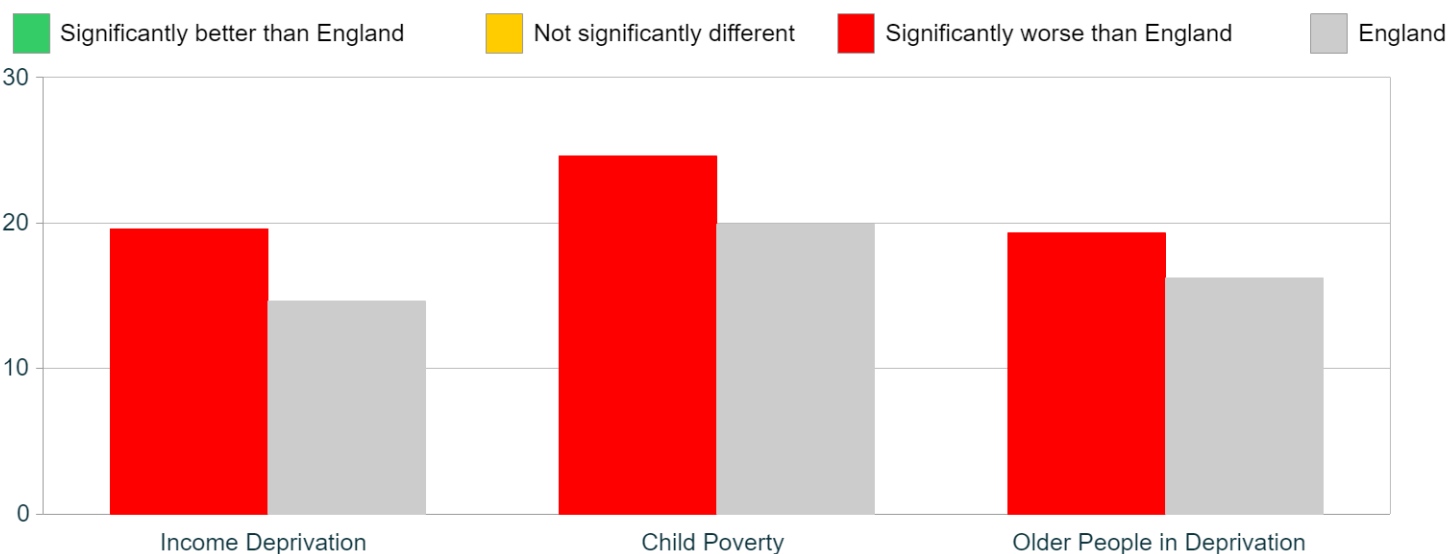
Source: DCLG © Copyright 2015

## Indices of Deprivation, 2015, %

Indicator	South East Holderness, East Riding of Yorkshire	East Riding of Yorkshire (LTLA 2013)	East Riding of Yorkshire (UTLA 2013)	England
Income Deprivation	19.6	10.9	10.9	14.6
Child Poverty	24.6	13.1	13.1	19.9
Older People in Deprivation	19.3	12.6	12.6	16.2

Source: DCLG © Copyright 2015

## Indices of Deprivation, 2015, %, Selection (comparing to England average)



Source: DCLG © Copyright 2015



Report - Ward: South East Holderness, East Riding of Yorkshire

**Child Development and Education****Child development and education indicators, numbers**

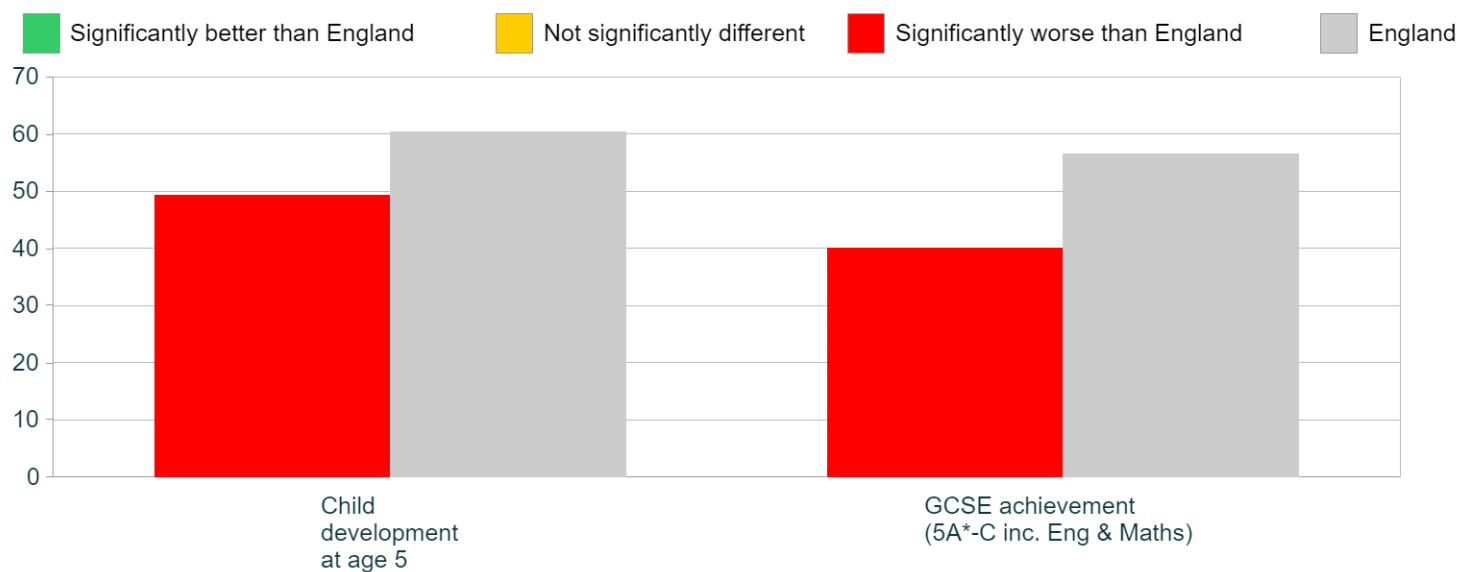
Indicator	South East Holderness, East Riding of Yorkshire	East Riding of Yorkshire (LTLA 2013)	East Riding of Yorkshire (UTLA 2013)	England
A good level of development at age 5, 2013/14	69	2,157	2,157	387,000
Achieving 5A*-C (inc Eng & Maths) GCSE, 2013/14	70	2,067	2,067	315,795

Source: Public Health England, ONS, DfE

**Child development and education indicators, values (estimated from MSOA level data)**

Indicator	South East Holderness, East Riding of Yorkshire	East Riding of Yorkshire (LTLA 2013)	East Riding of Yorkshire (UTLA 2013)	England
Child development at age 5	49.3	65.3	65.3	60.4
GCSE achievement (5A*-C inc. Eng & Maths)	40.1	58.8	58.8	56.6

Source: Public Health England, ONS, DfE

**Child development and education indicators, Selection (comparing to England average)**

Source: Public Health England, ONS, DfE





Report - Ward: South East Holderness, East Riding of Yorkshire

## Employment

## Employment Indicators, numbers, 2017/18

indicator	South East Holderness, East Riding of Yorkshire	East Riding of Yorkshire (LTLA 2013)	East Riding of Yorkshire (UTLA 2013)	England
Claiming job seekers allowances*	187	2,820	2,820	665,871
Claiming job seekers allowances >1 year	39	642	642	124,616

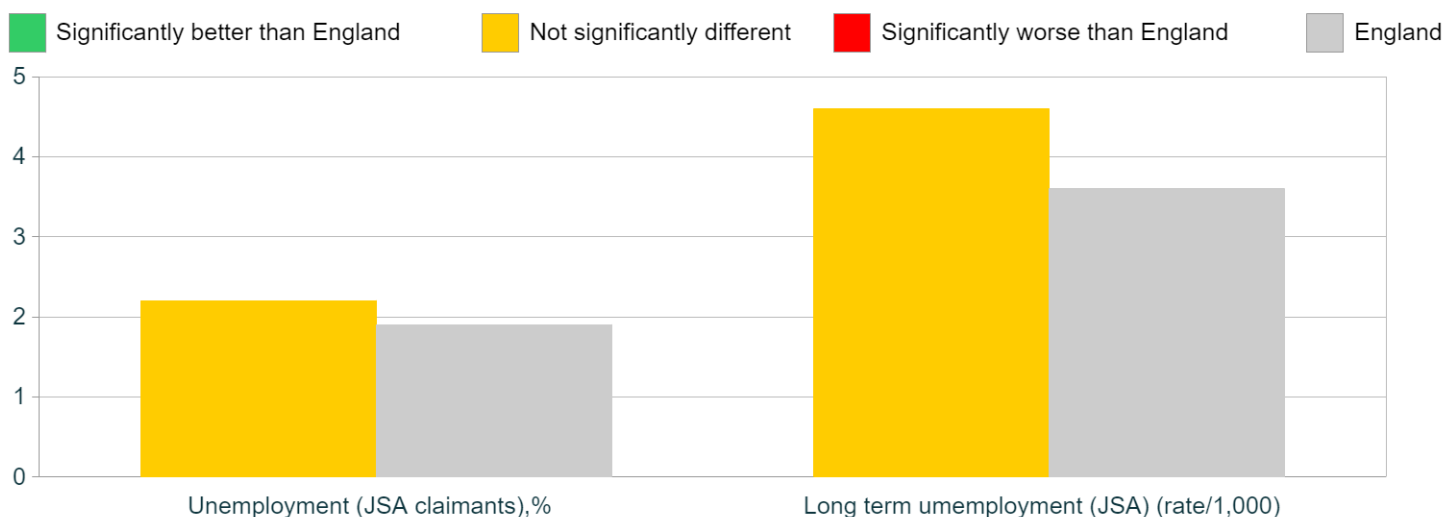
Source: NOMIS \*Monthly average

## Employment Indicators, 2017/18, %

indicator	South East Holderness, East Riding of Yorkshire	East Riding of Yorkshire (LTLA 2013)	East Riding of Yorkshire (UTLA 2013)	England
Unemployment (JSA claimants), %	2.2	1.4	1.4	1.9
Long term unemployment (JSA) (rate/1,000)	4.6	3.3	3.3	3.6

Source: NOMIS \*Monthly average

## Employment indicators, selection compared to England



Source: NOMIS



Report - Ward: South East Holderness, East Riding of Yorkshire

**Long-term health conditions and morbidity****Long-term health conditions and morbidity, 2011 and 2012, numbers**

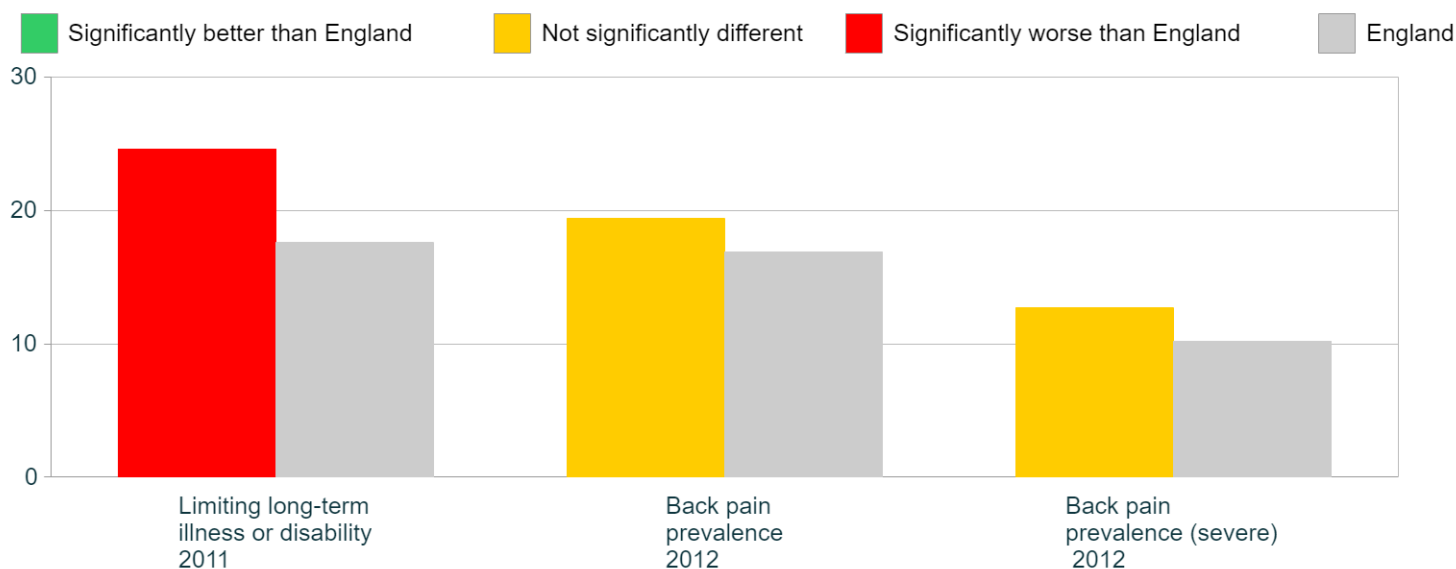
Indicator	South East Holderness, East Riding of Yorkshire	East Riding of Yorkshire (LTLA 2013)	East Riding of Yorkshire (UTLA 2013)	England
Limiting long term illness or disability, 2011	3,658	63,965	63,965	9,352,586
Back pain prevalence, 2012	2,907	63,808	63,808	9,050,326
Back pain prevalence (severe), 2012	1,898	39,938	39,938	5,479,744

Source: ONS Census, 2011, Arthritis Research UK 1998-2017

**Long-term health conditions and morbidity, 2011 and 2012, %**

Indicator	South East Holderness, East Riding of Yorkshire	East Riding of Yorkshire (LTLA 2013)	East Riding of Yorkshire (UTLA 2013)	England
Limiting long-term illness or disability 2011	24.6	19.1	19.1	17.6
Back pain prevalence, %, 2012	19.4	19	19	16.9
Back pain prevalence (severe), %, 2012	12.7	11.9	11.9	10.2

Source: ONS Census, 2011, Arthritis Research UK 1998-2017

**Long-term health conditions and morbidity, , 2011 and 2012, %, Selection (comparing to England average)**

Source: ONS Census, 2011, Arthritis Research UK 1998-2017



Report - Ward: South East Holderness, East Riding of Yorkshire

## Housing and Living Environment

### Housing and living environment indicators, 2011 and 2016 numbers

Indicator	South East Holderness, East Riding of Yorkshire	East Riding of Yorkshire (LTLA 2013)	East Riding of Yorkshire (UTLA 2013)	England
Fuel Poverty, 2016	855	14,238	14,238	2,550,565
Pensioners living alone, 2011	935	19,540	19,540	2,725,596

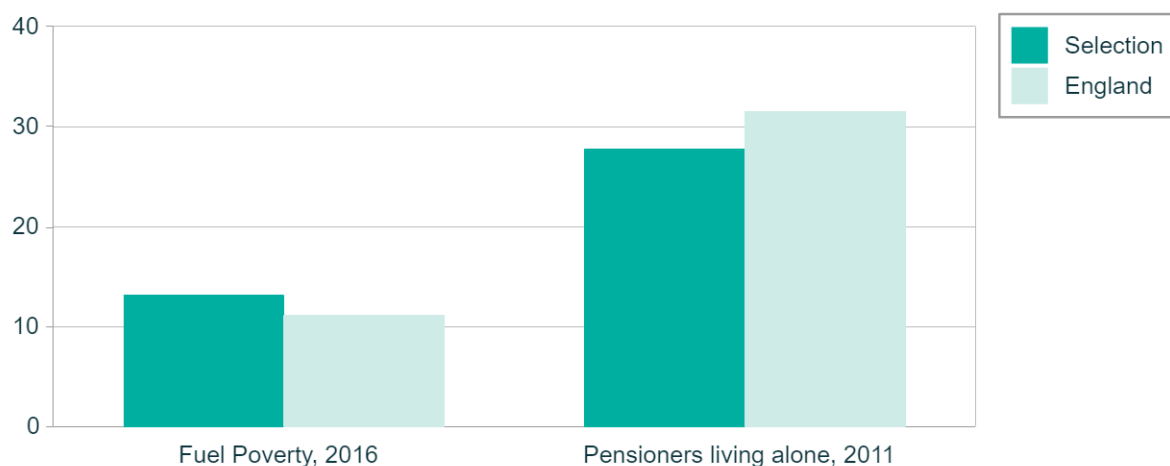
Source: ONS Census, 2011; Department of Energy and Climate Change, 2016

### Housing and living environment indicators, 2011 and 2016, %

Indicator	South East Holderness, East Riding of Yorkshire	East Riding of Yorkshire (LTLA 2013)	East Riding of Yorkshire (UTLA 2013)	England
Fuel Poverty, 2016	13.1	9.7	9.7	11.1
Pensioners living alone, 2011	27.7	27.3	27.3	31.5

Source: ONS Census, 2011; Department of Energy and Climate Change, 2016

### Housing and living environment indicators, 2011, %, Selection (comparing to England average)



Source: ONS Census





Report - Ward: South East Holderness, East Riding of Yorkshire

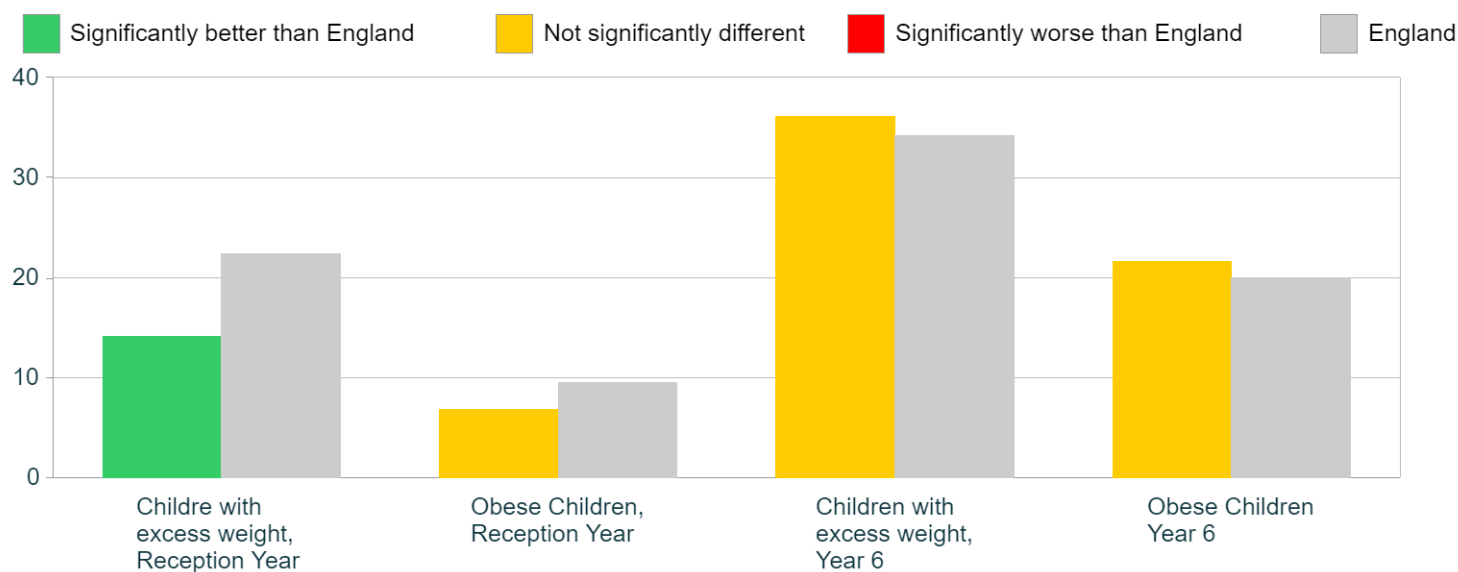
## Children's Weight (NCMP)

Children's weight indicators, 2015/16-2017/18, %

indicator	South East Holderness, East Riding of Yorkshire	East Riding of Yorkshire (LTLA 2013)	East Riding of Yorkshire (UTLA 2013)	England
Childre with excess weight, Reception Year	14.1	18.8	18.8	22.4
Obese Children, Reception Year	6.8	7.7	7.7	9.5
Children with excess weight, Year 6	36.1	31.6	31.6	34.2
Obese Children Year 6	21.6	17	17	20

Source: National Child Measurement Programme, NHS Digital © 2018

Children's weight indicators, %, Selection (comparing to England average)



Source: National Child Measurement Programme, NHS Digital © 2018



Report - Ward: South East Holderness, East Riding of Yorkshire

## Behavioural Risk Factors (modelled estimates)

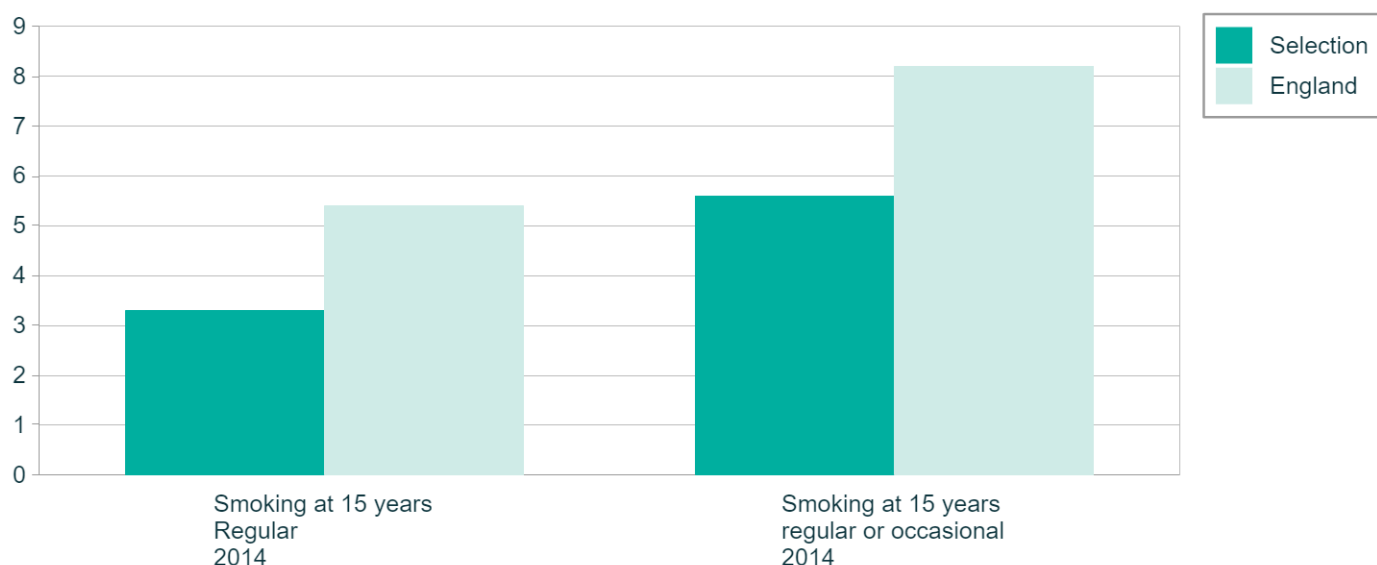
### Behavioural Risk Factors, numbers (estimated from MSOA level data)

Indicator	South East Holderness, East Riding of Yorkshire	East Riding of Yorkshire (LTLA 2013)	East Riding of Yorkshire (UTLA 2013)	England
Smoking at 15 years - Regular, 2014	5	192	192	33,180
Smoking at 15 years - regular or occasional, 2014	8	278	278	50,082

### Behavioural Risk Factors, % (estimated from MSOA level data)

Indicator	South East Holderness, East Riding of Yorkshire	East Riding of Yorkshire (LTLA 2013)	East Riding of Yorkshire (UTLA 2013)	England
Smoking at 15 years Regular 2014	3.3	5.2	5.2	5.4
Smoking at 15 years regular or occasional 2014	5.6	7.6	7.6	8.2

### Behavioural Risk Factors, %, Selection (comparing to England average)





Report - Ward: South East Holderness, East Riding of Yorkshire

## Emergency hospital admissions

## Emergency Hospital Admissions, numbers, 2013/14 to 2017/18 (estimated from MSOA level data)

Indicator	South East Holderness, East Riding of Yorkshire	East Riding of Yorkshire (LTLA 2013)	East Riding of Yorkshire (UTLA 2013)	England
Emergency hospital admissions for all causes	8,427	162,424	162,424	28,237,971
Emergency hospital admissions for CHD*	239	5,579	5,579	681,640
Emergency hospital admissions for stroke	162	3,155	3,155	408,725
Emergency hospital admissions for MI*	99	2,608	2,608	355,962
Emergency hospital admissions for COPD*	335	4,179	4,179	613,747

Source: Public Health England, NHS Digital © Copyright 2018

\* CHD: Coronary Heart Disease; MI: Myocardial Infarction (heart attack); COPD: Chronic Obstructive Pulmonary Disease

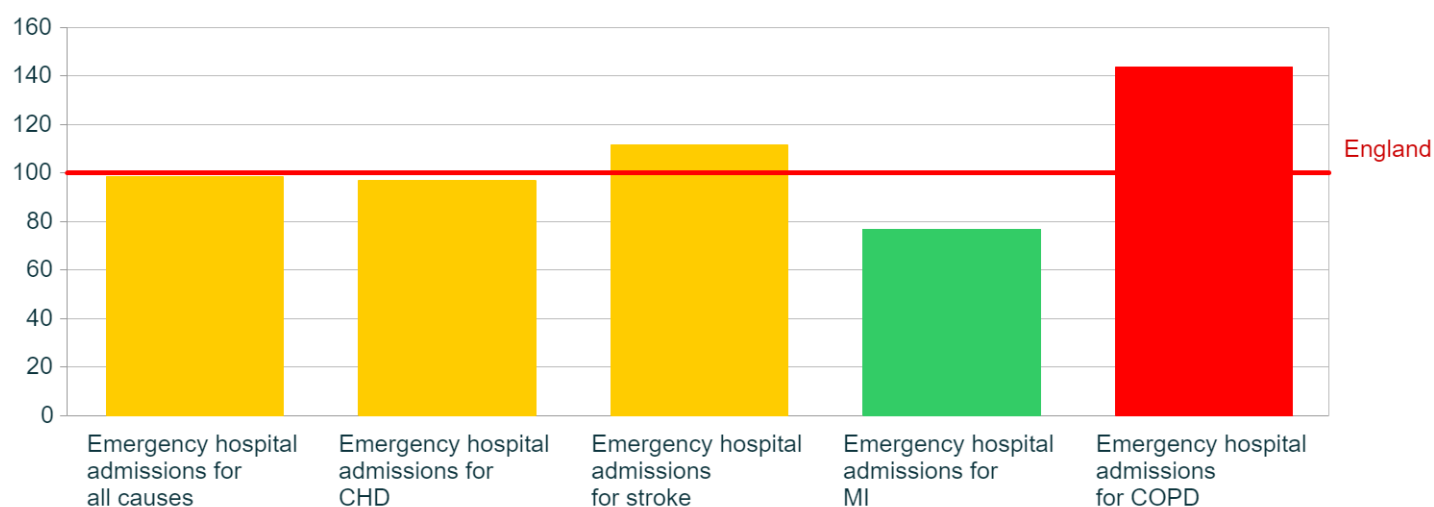
## Emergency Hospital Admissions, Standardised Admission Ratios (SAR), 2013/14 to 2017/18 (estimated from MSOA data)

Indicator	South East Holderness, East Riding of Yorkshire	East Riding of Yorkshire (LTLA 2013)	East Riding of Yorkshire (UTLA 2013)	England
Emergency hospital admissions for all causes	98.4	84.6	84.6	100
Emergency hospital admissions for CHD	96.7	103.7	103.7	100
Emergency hospital admissions for stroke	111.5	97	97	100
Emergency hospital admissions for MI	76.8	93	93	100
Emergency hospital admissions for COPD	143.6	83.5	83.5	100

Source: Public Health England, NHS Digital © Copyright 2018

## Emergency Hospital admissions, SAR, 2013/14 to 2017/18 , Selection (comparing to England average)

■ Significantly better than England
 ■ Not significantly different
 ■ Significantly worse than England



Source: Public Health England, NHS Digital © Copyright 2018



Report - Ward: South East Holderness, East Riding of Yorkshire

## Cancer incidence

## Cancer incidence, numbers, 2012-2016 (estimated from MSOA level data)

Indicator	South East Holderness, East Riding of Yorkshire	East Riding of Yorkshire (LTLA 2013)	East Riding of Yorkshire (UTLA 2013)	England
All cancer	587	11,724	11,724	1,497,246
Breast cancer	72	1,692	1,692	225,546
Colorectal cancer	69	1,388	1,388	173,912
Lung cancer	101	1,473	1,473	189,310
Prostate cancer	75	1,696	1,696	201,770

Source: English cancer registration data from the National Cancer Registration and Analysis Services' Cancer Analysis System (AV2016 CASREF01)

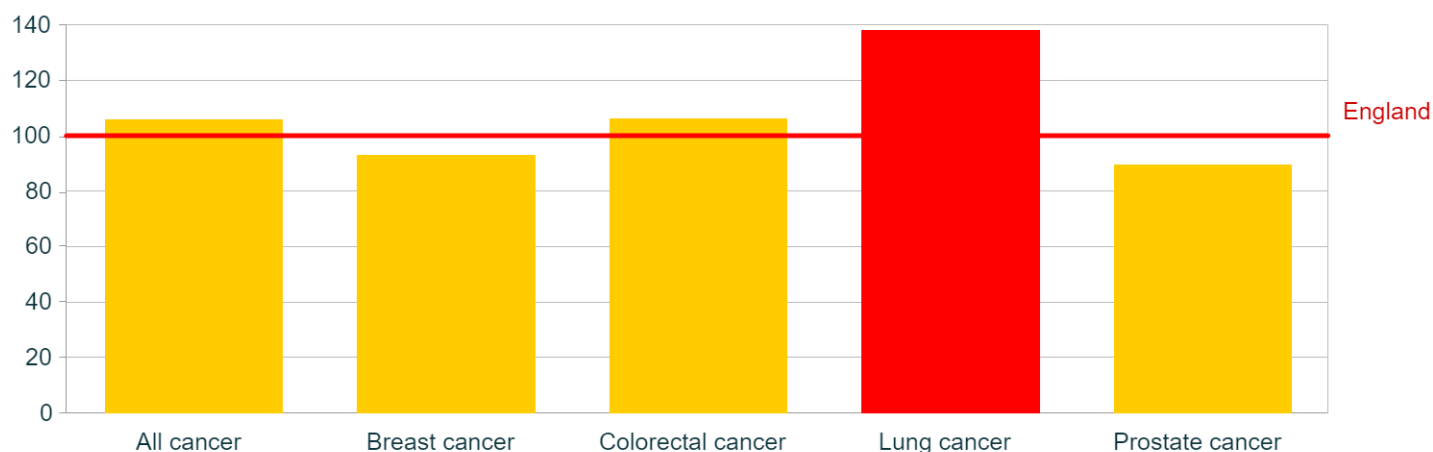
## Cancer incidence, Standardised Incidence Ratios (SIR), 2012-2016 (estimated from MSOA level data)

Indicator	South East Holderness, East Riding of Yorkshire	East Riding of Yorkshire (LTLA 2013)	East Riding of Yorkshire (UTLA 2013)	England
All cancer	105.8	99.1	99.1	100
Breast cancer	92.8	98.4	98.4	100
Colorectal cancer	106	99.4	99.4	100
Lung cancer	138.1	95	95	100
Prostate cancer	89.4	101.2	101.2	100

Source: English cancer registration data from the National Cancer Registration and Analysis Services' Cancer Analysis System (AV2016 CASREF01)

## Cancer incidence, SIR, 2012-2016, Selection (comparing to England average)

Significantly better than England      Not significantly different      Significantly worse than England



Source: English cancer registration data from the National Cancer Registration and Analysis Services' Cancer Analysis System



Report - Ward: South East Holderness, East Riding of Yorkshire

**Hospital admissions - harm and injury****\*Hospital admissions - harm and injury, numbers, 2013/14 to 2017/18**

Indicator	South East Holderness, East Riding of Yorkshire	East Riding of Yorkshire (LTLA 2013)	East Riding of Yorkshire (UTLA 2013)	England
Hospital stays for self harm	118	2,197	2,197	531,468
Hospital stays for alcohol related harm (N*)	548	10,632	10,632	1,659,677
Hospital stays for alcohol related harm (B*)	2,228	39,802	39,802	5,529,516
Emergency admissions for hip fracture aged 65+	96	2,297	2,297	289,119

Source: Public Health England, NHS Digital © Copyright 2018

N\* = Narrow definition, B\* = Broad definition

**Hospital admissions - harm and injury, Standardised Admission Ratios (SAR), 2013/14 to 2017/18 (estimated from MSOA)**

Indicator	South East Holderness, East Riding of Yorkshire	East Riding of Yorkshire (LTLA 2013)	East Riding of Yorkshire (UTLA 2013)	England
Hospital stays for self harm	93	73.7	73.7	100
Hospital stays for alcohol related harm (N*)	106.6	93.8	93.8	100
Hospital stays for alcohol related harm (B*)	118.3	97.8	97.8	100
Emergency admissions for hip fracture aged 65+	96.5	98.9	98.9	100

Source: Public Health England, NHS Digital © Copyright 2018

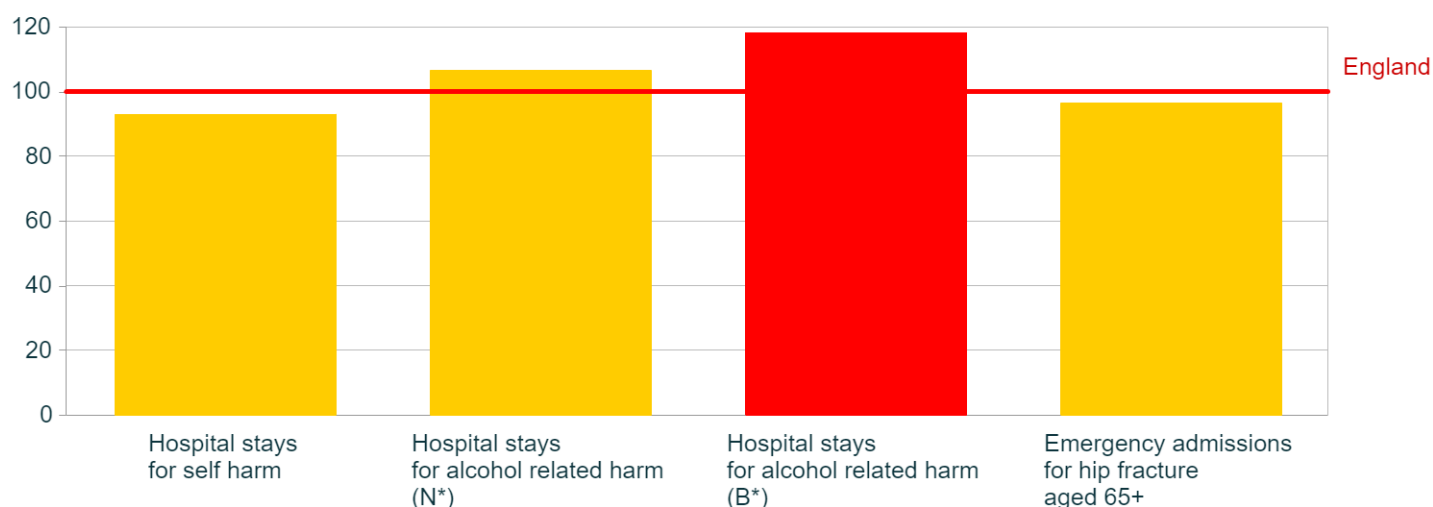
N\* = Narrow definition, B\* = Broad definition

**Hospital admissions - harm and injury, SAR, 2013/14 to 2017/18 , Selection (comparing to England average)**

Significantly better than England

Not significantly different

Significantly worse than England



Source: Public Health England, NHS Digital © Copyright 2018

N\* = Narrow definition, B\* = Broad definition



Report - Ward: South East Holderness, East Riding of Yorkshire

**Mortality and causes of death - all ages****Causes of deaths - all ages, numbers, 2013 - 2017**

Indicator	South East Holderness, East Riding of Yorkshire	East Riding of Yorkshire (LTLA 2013)	East Riding of Yorkshire (UTLA 2013)	England
All causes	936	18,985	18,985	2,427,410
All cancer	291	5,332	5,332	676,383
All circulatory disease	253	5,308	5,308	634,957
Coronary heart disease	106	2,316	2,316	279,041
Stroke	64	1,465	1,465	157,430
Respiratory diseases	153	2,656	2,656	335,078
Causes considered preventable	185	3,202	3,202	462,594

Source: Public Health England, produced from ONS data Copyright © 2018

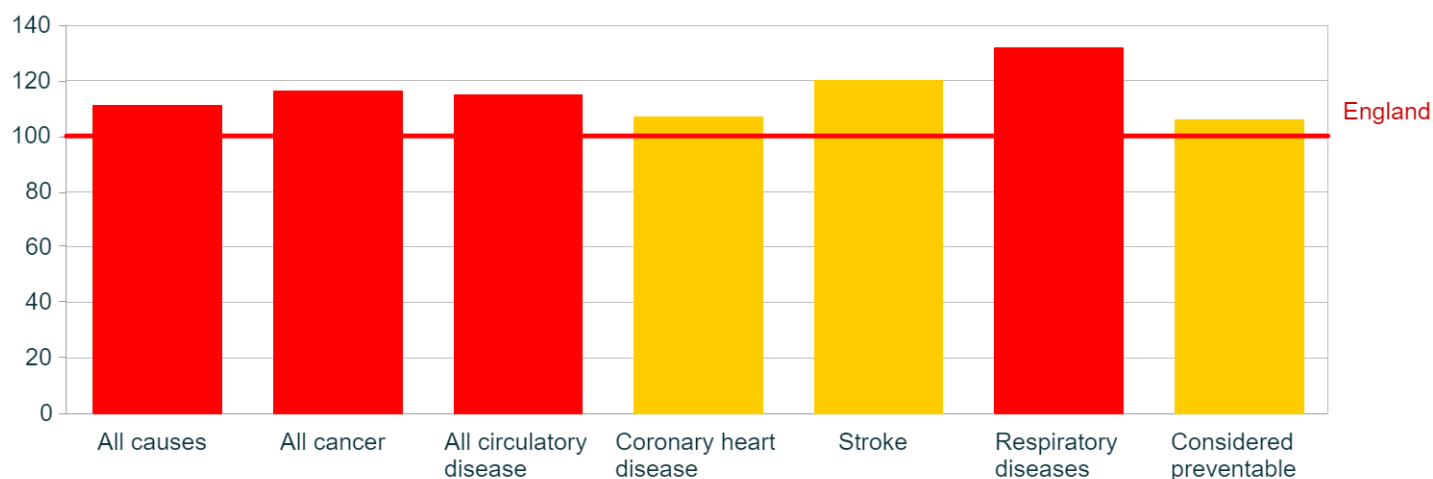
**Causes of deaths - all ages, Standardised Mortality Ratios (SMR), 2013 - 2017**

Indicator	South East Holderness, East Riding of Yorkshire	East Riding of Yorkshire (LTLA 2013)	East Riding of Yorkshire (UTLA 2013)	England
All causes	111.1	99.4	99.4	100
All cancer	116.2	97.7	97.7	100
All circulatory disease	114.8	105.5	105.5	100
Coronary heart disease	106.8	103.9	103.9	100
Stroke	120.1	117.9	117.9	100
Respiratory diseases	131.9	99.7	99.7	100
Considered preventable	105.9	89	89	100

Source: Public Health England, produced from ONS data Copyright © 2018

**Causes of deaths - all ages, SMR, 2013 - 2017 Selection (comparing to England average)**

■ Significantly better than England
 ■ Not significantly different
 ■ Significantly worse than England



Source: Public Health England, produced from ONS data Copyright © 2018





Report - Ward: South East Holderness, East Riding of Yorkshire

### Mortality and causes of death - premature mortality

#### Causes of deaths - premature mortality, numbers, 2013 - 2017

Indicator	South East Holderness, East Riding of Yorkshire	East Riding of Yorkshire (LTLA 2013)	East Riding of Yorkshire (UTLA 2013)	England
All causes, aged under 75	327	5,410	5,410	768,760
All cancer, aged under 75	149	2,307	2,307	312,344
All circulatory disease, aged under 75	66	1,290	1,290	167,452

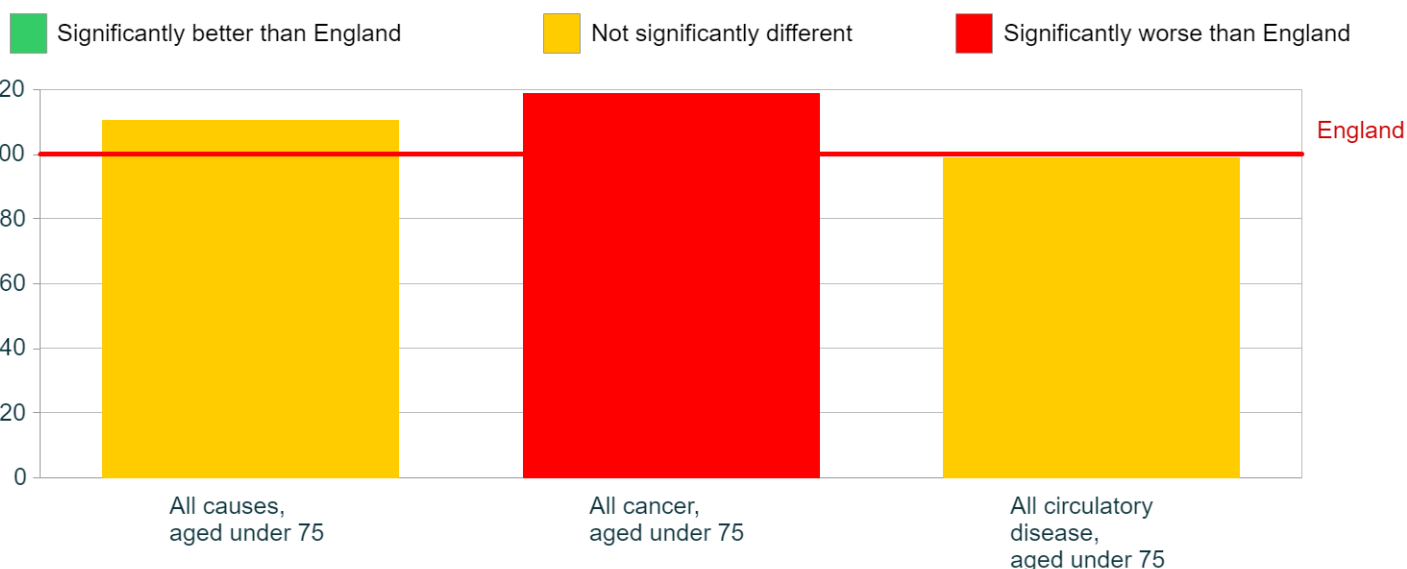
Source: Public Health England, produced from ONS data Copyright © 2018

#### Causes of deaths - premature mortality, Standardised Mortality Ratios (SMR), 2013 - 2017

Indicator	South East Holderness, East Riding of Yorkshire	East Riding of Yorkshire (LTLA 2013)	East Riding of Yorkshire (UTLA 2013)	England
All causes, aged under 75	110.5	90.4	90.4	100
All cancer, aged under 75	118.8	91.9	91.9	100
All circulatory disease, aged under 75	98.9	96.3	96.3	100

Source: Public Health England, produced from ONS data Copyright © 2018

#### Causes of deaths - premature mortality, SMR, 2013 - 2017, Selection (comparing to England average)



Source: Public Health England, produced from ONS data Copyright © 2018



Report - Ward: South East Holderness, East Riding of Yorkshire

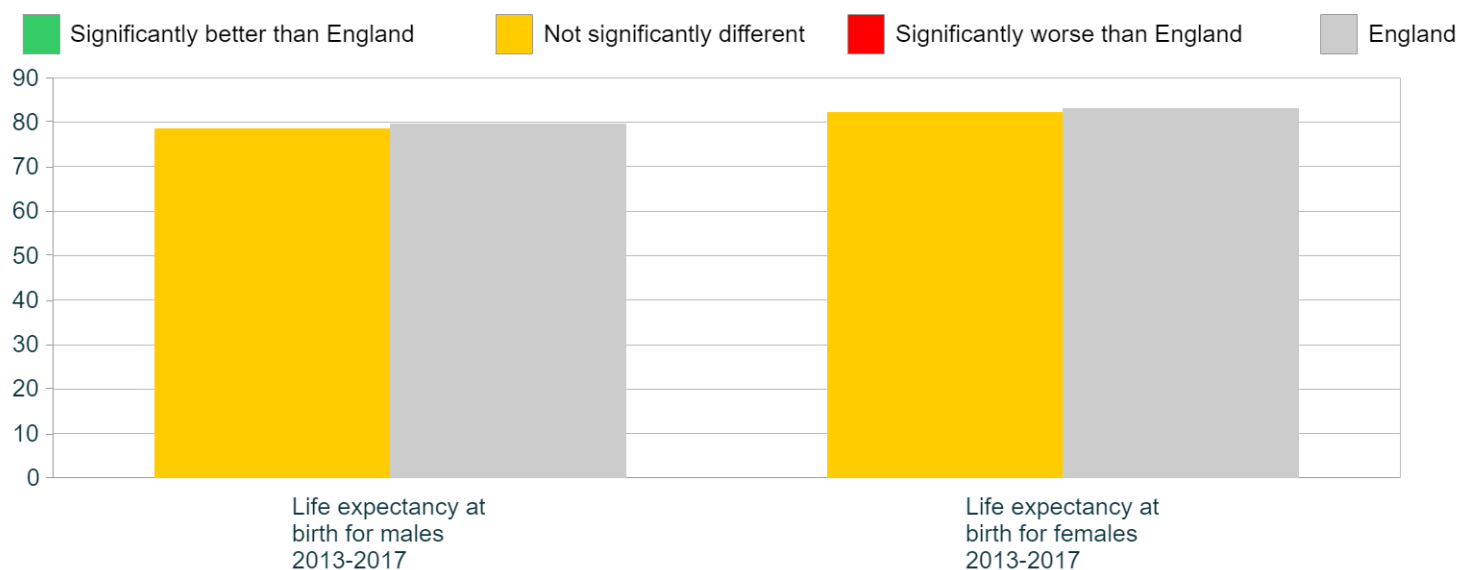
### Life expectancy

#### Life expectancy, years, 2013-2017

indicator	South East Holderness, East Riding of Yorkshire	East Riding of Yorkshire (LTLA 2013)	East Riding of Yorkshire (UTLA 2013)	England
Life expectancy at birth for males 2013-2017	78.5	80.1	80.1	79.5
Life expectancy at birth for females 2013-2017	82.2	83.5	83.5	83.1

Source: Public Health England, produced from ONS data Copyright © 2018

#### Life expectancy, compared to England, years, 2013-2017



Source: Public Health England, produced from ONS data Copyright © 2018