



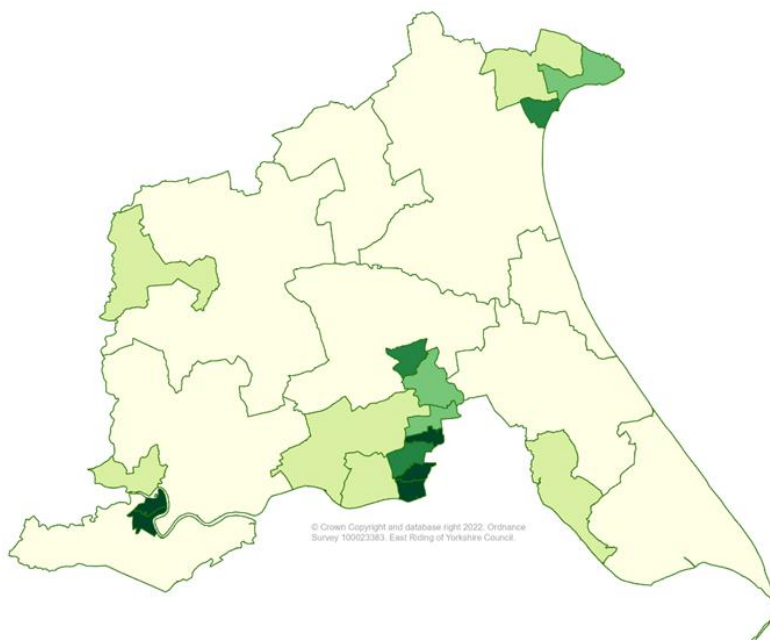
## Pharmaceutical Needs Assessment

2022 - 2025

### Appendix Eighteen

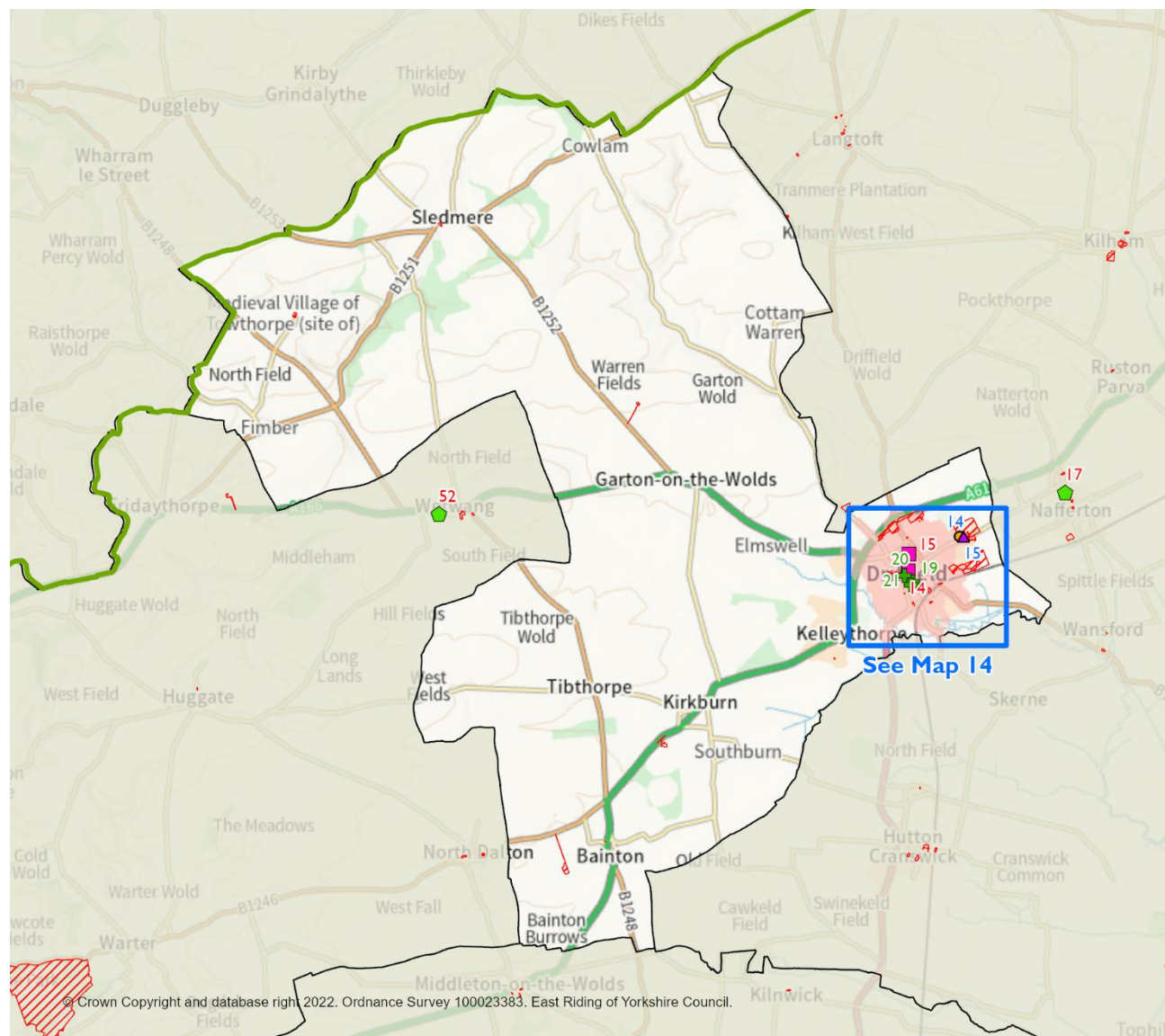
#### Current Provision Maps 13 – 24

- 13- 14 Driffield and Rural
- 15- Goole North
- 16- Goole South
- 17- Hessle
- 18- Howden
- 19- Howdenshire North
- 20- Howdenshire South
- 21- North Holderness
- 22- Hornsea
- 23- Pocklington  
Provincial
- 24- Snaith, Airmyn,  
Rawcliffe and  
Marshland (West)





## Map 13 Driffield and Rural



### Current Service Provision - Driffield and Rural

- East Riding Wards
- East Riding Boundary
- 1 mile drive from East Riding pharmacies
- 1 mile drive from out of area pharmacies
- Housing Land Supply Position Statement (Formerly SHLAA)

#### Pharmacies

- Distance Selling Pharmacy
- Pharmacy
- Out of Area Pharmacies

#### General Practices

- GP Branch
- GP Branch Dispensing
- GP Main
- GP Main Dispensing

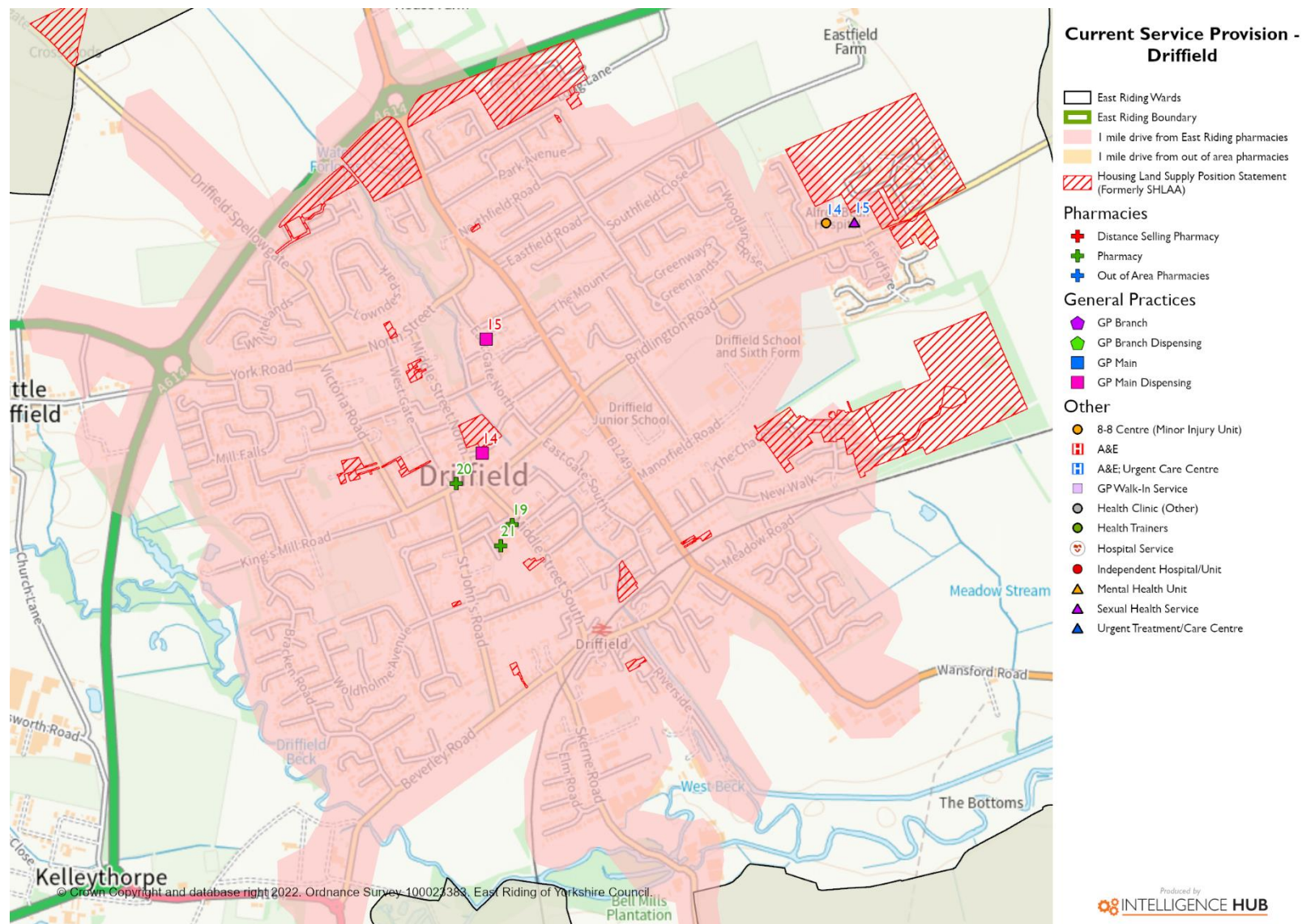
#### Other

- 8-8 Centre (Minor Injury Unit)
- A&E
- A&E: Urgent Care Centre
- GP Walk-In Service
- Health Clinic (Other)
- Health Trainers
- Hospital Service
- Independent Hospital/Unit
- Mental Health Unit
- Sexual Health Service
- Urgent Treatment/Care Centre



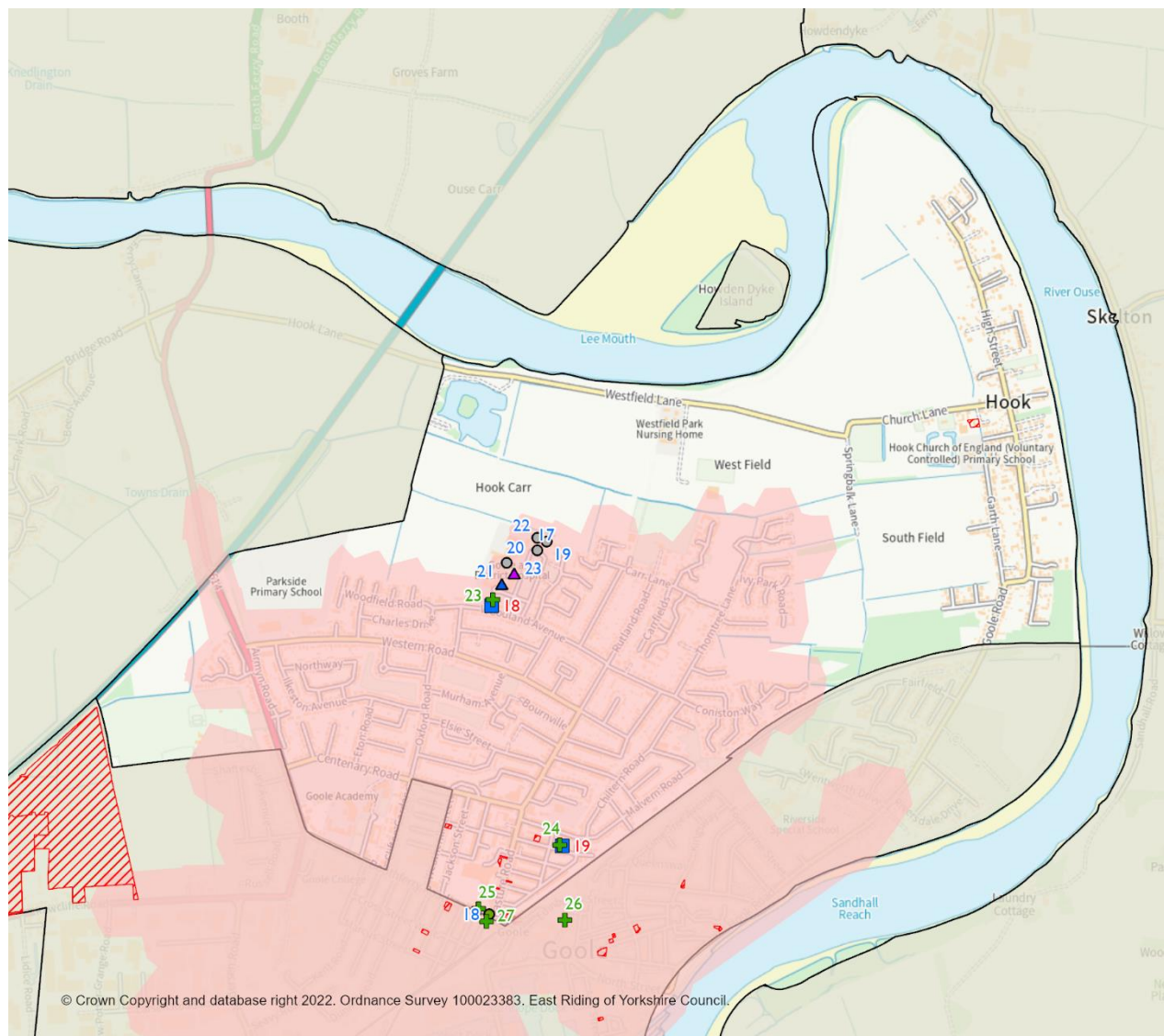


Map 14 Driffield Area





## Map 15 Goole North



### Current Service Provision - Goole North

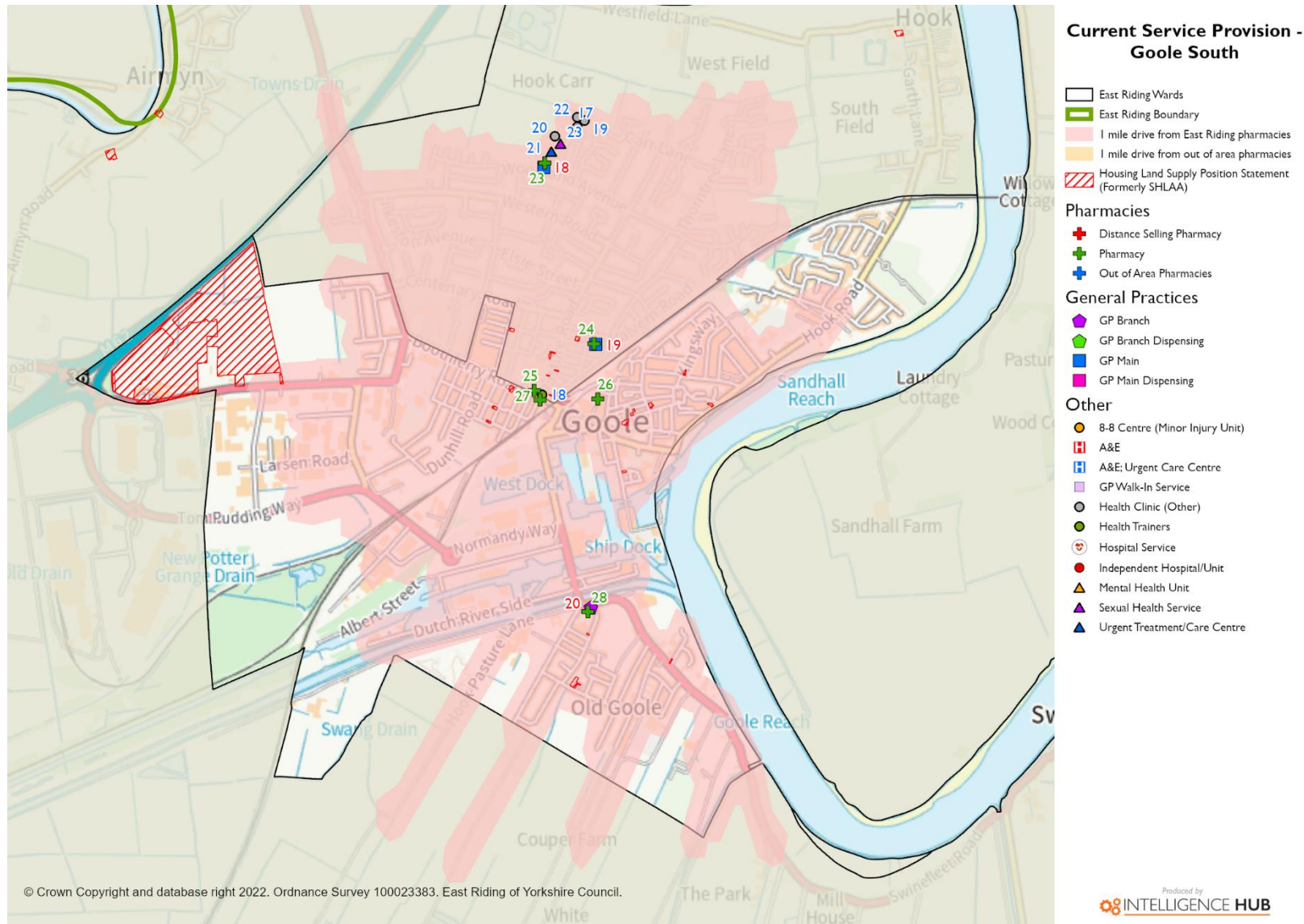
- East Riding Wards
  - East Riding Boundary
  - 1 mile drive from East Riding pharmacies
  - 1 mile drive from out of area pharmacies
  - Housing Land Supply Position Statement (Formerly SHLAA)
- Pharmacies**
- Distance Selling Pharmacy
  - Pharmacy
  - Out of Area Pharmacies
- General Practices**
- GP Branch
  - GP Branch Dispensing
  - GP Main
  - GP Main Dispensing
- Other**
- 8-8 Centre (Minor Injury Unit)
  - A&E
  - A&E Urgent Care Centre
  - GP Walk-In Service
  - Health Clinic (Other)
  - Health Trainers
  - Hospital Service
  - Independent Hospital/Unit
  - Mental Health Unit
  - Sexual Health Service
  - Urgent Treatment/Care Centre

© Crown Copyright and database right 2022. Ordnance Survey 100023383. East Riding of Yorkshire Council.

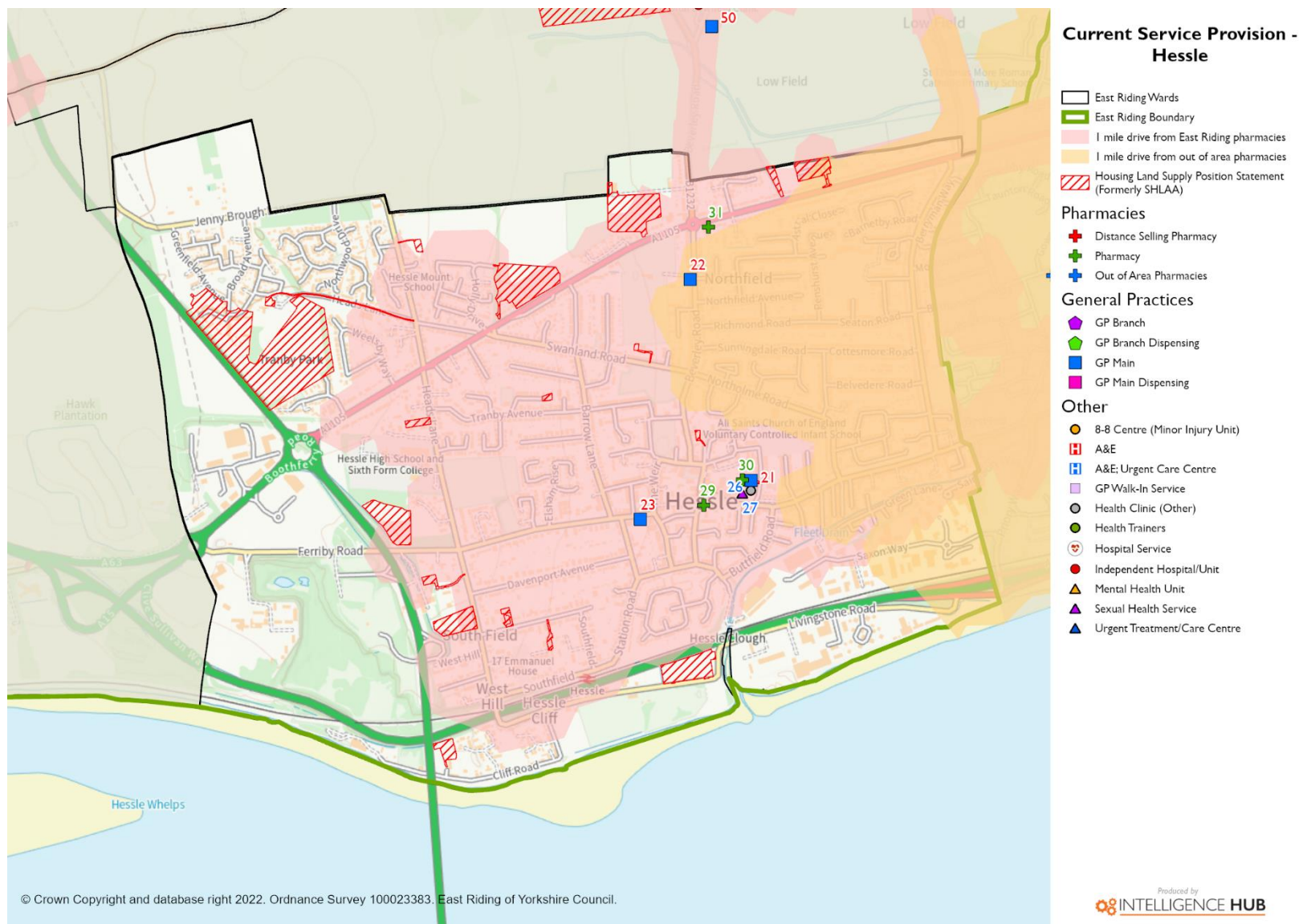




## Map 16 Goole South



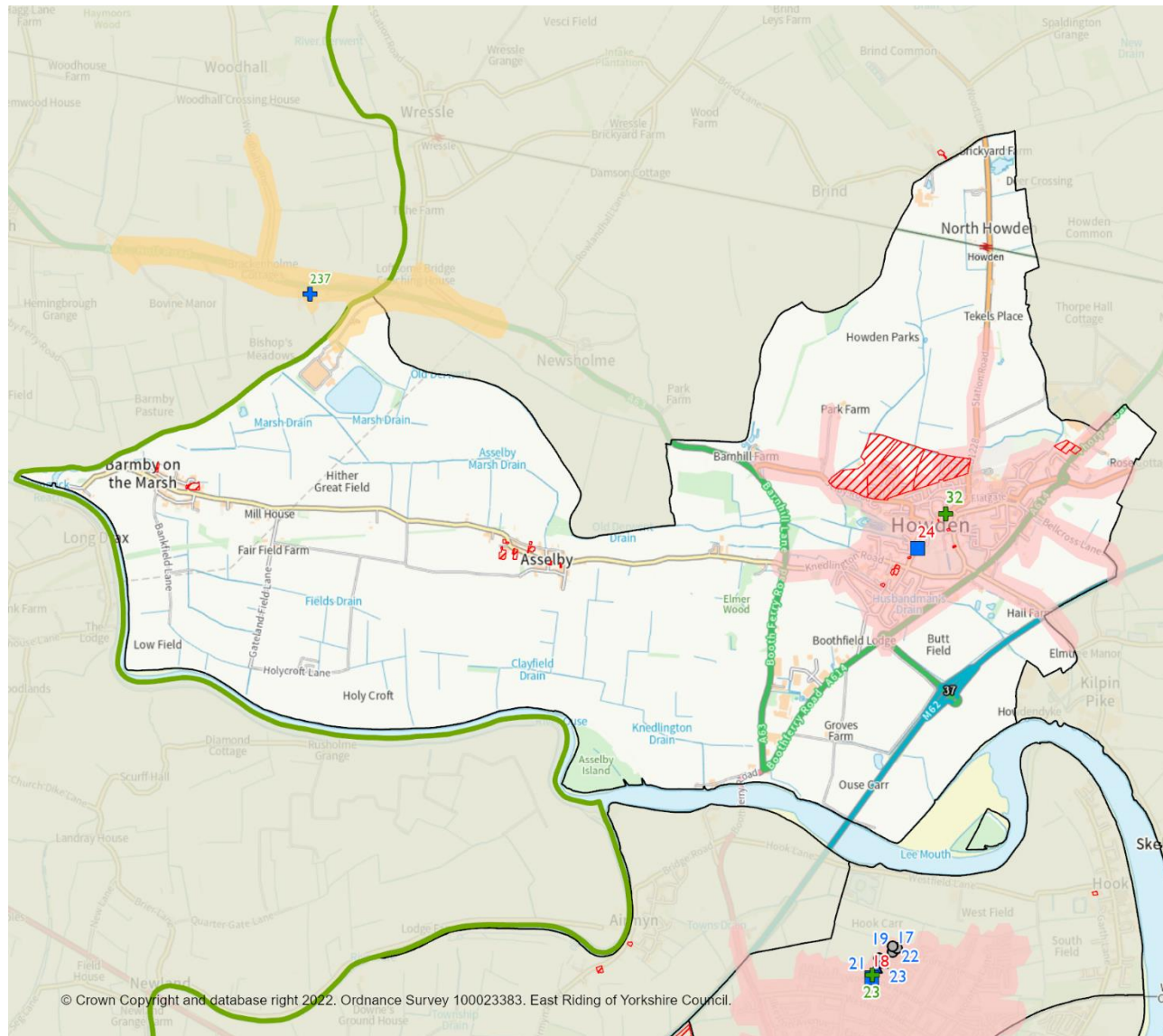
**Map 17 Hessle**







## Map 18 Howden



### Current Service Provision - Howden

- East Riding Wards
- East Riding Boundary
- 1 mile drive from East Riding pharmacies
- 1 mile drive from out of area pharmacies
- Housing Land Supply Position Statement (Formerly SHLAA)

#### Pharmacies

- Distance Selling Pharmacy
- Pharmacy
- Out of Area Pharmacies

#### General Practices

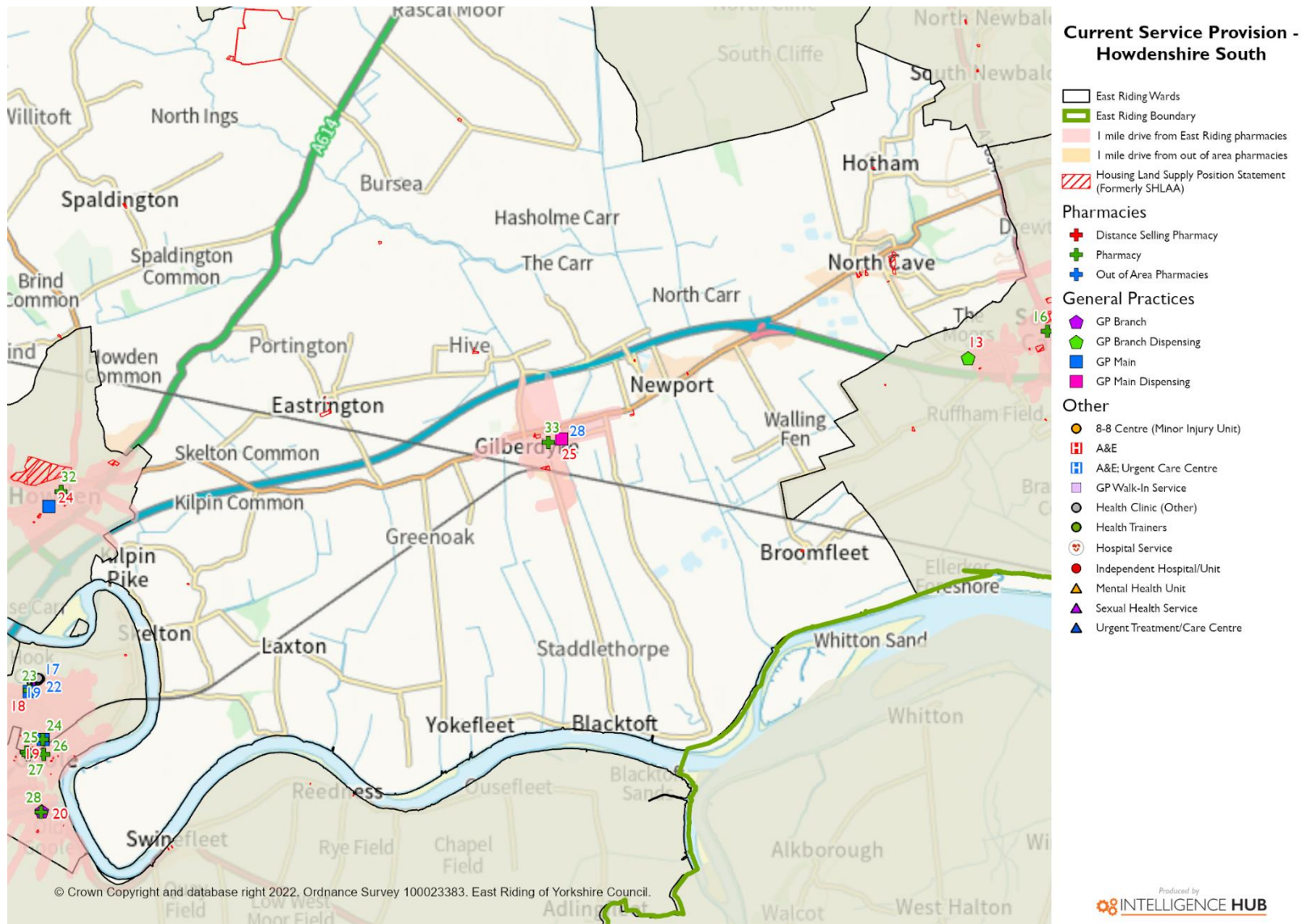
- GP Branch
- GP Branch Dispensing
- GP Main
- GP Main Dispensing

#### Other

- 8-8 Centre (Minor Injury Unit)
- A&E
- A&E Urgent Care Centre
- GP Walk-In Service
- Health Clinic (Other)
- Health Trainers
- Hospital Service
- Independent Hospital/Unit
- Mental Health Unit
- Sexual Health Service
- Urgent Treatment/Care Centre



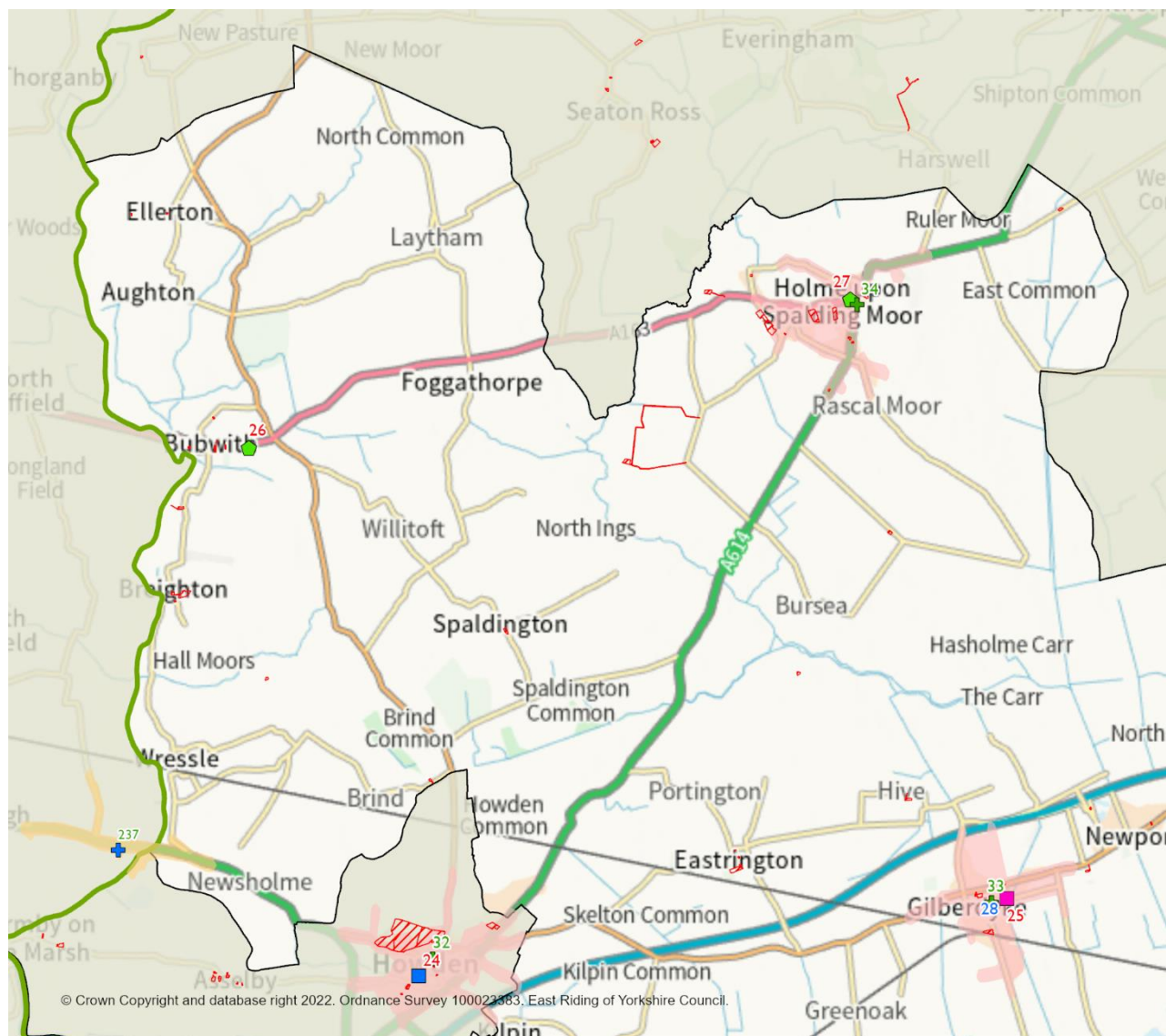
Map 19 Howdenshire South







Map 20 Howdenshire North



**Current Service Provision -  
Howdenshire North**

- East Riding Wards
- East Riding Boundary
- 1 mile drive from East Riding pharmacies
- 1 mile drive from out of area pharmacies
- Housing Land Supply Position Statement (Formerly SHLAA)

**Pharmacies**

- Distance Selling Pharmacy
- Pharmacy
- Out of Area Pharmacies

**General Practices**

- GP Branch
- GP Branch Dispensing
- GP Main
- GP Main Dispensing

**Other**

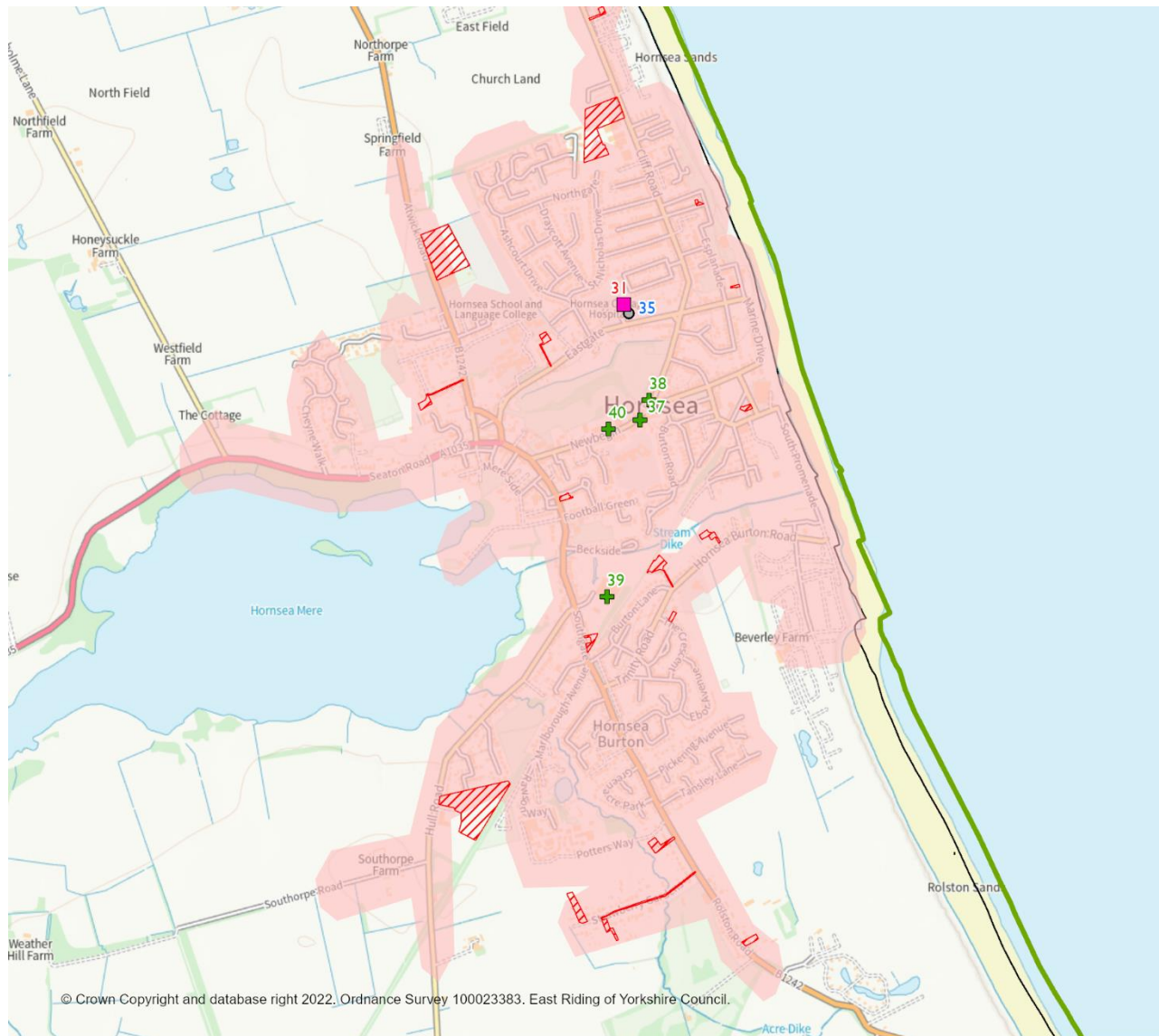
- 8-8 Centre (Minor Injury Unit)
- A&E
- A&E: Urgent Care Centre
- GP Walk-In Service
- Health Clinic (Other)
- Health Trainers
- Hospital Service
- Independent Hospital/Unit
- Mental Health Unit
- Sexual Health Service
- Urgent Treatment/Care Centre

© Crown Copyright and database right 2022. Ordnance Survey 100023383. East Riding of Yorkshire Council.

Produced by  
**INTELLIGENCE HUB**



## Map 21 North Holderness Hornsea Area



### Current Service Provision - Hornsea

- East Riding Wards
- East Riding Boundary
- 1 mile drive from East Riding pharmacies
- 1 mile drive from out of area pharmacies
- Housing Land Supply Position Statement (Formerly SHLAA)

### Pharmacies

- Distance Selling Pharmacy
- Pharmacy
- Out of Area Pharmacies

### General Practices

- GP Branch
- GP Branch Dispensing
- GP Main
- GP Main Dispensing

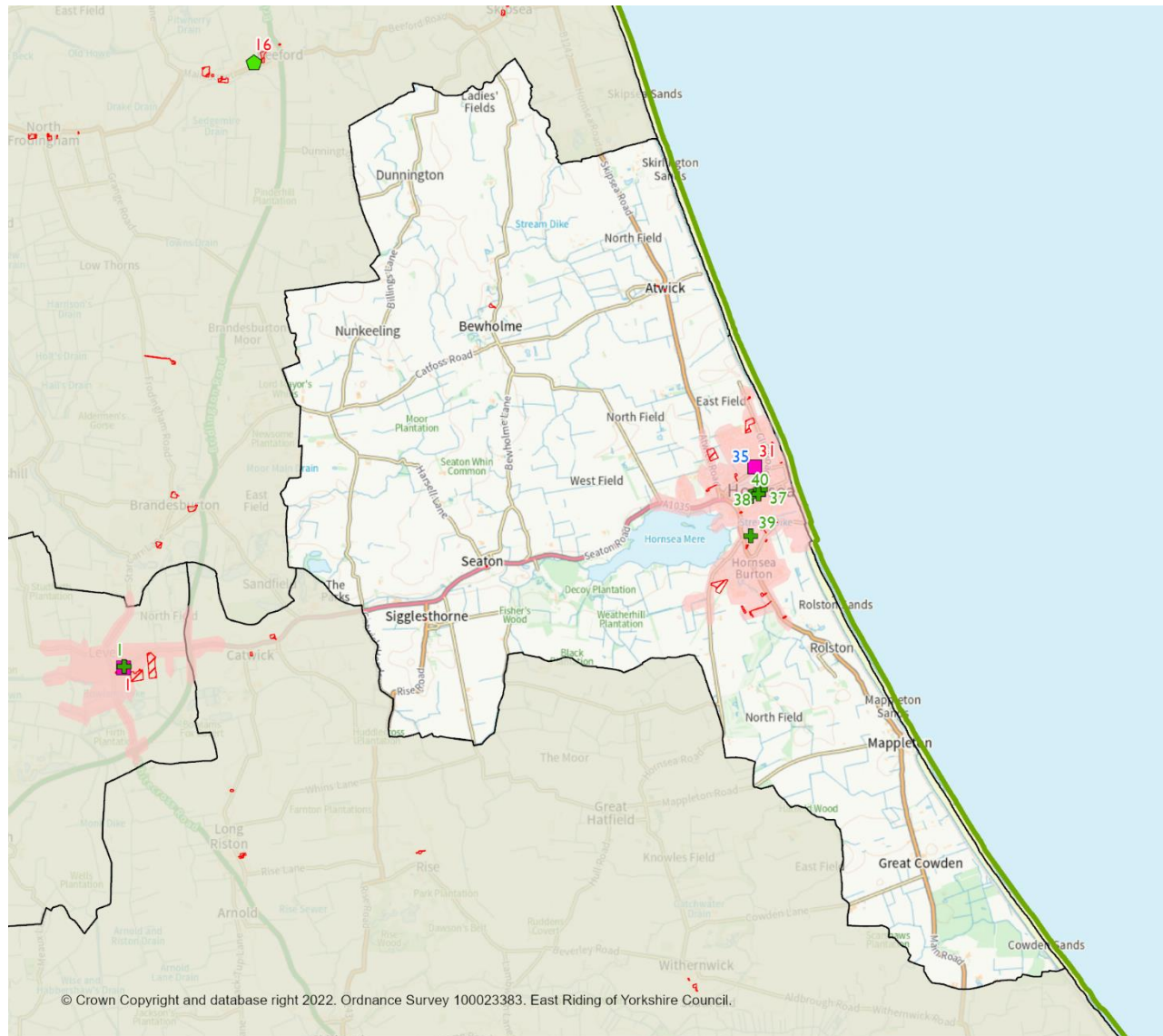
### Other

- 8-8 Centre (Minor Injury Unit)
- A&E
- A&E Urgent Care Centre
- GP Walk-In Service
- Health Clinic (Other)
- Health Trainers
- Hospital Service
- Independent Hospital/Unit
- Mental Health Unit
- Sexual Health Service
- Urgent Treatment/Care Centre





## Map 22 North Holderness



### Current Service Provision - North Holderness

- East Riding Wards
- East Riding Boundary
- 1 mile drive from East Riding pharmacies
- 1 mile drive from out of area pharmacies
- Housing Land Supply Position Statement (Formerly SHLAA)

#### Pharmacies

- Distance Selling Pharmacy
- Pharmacy
- Out of Area Pharmacies

#### General Practices

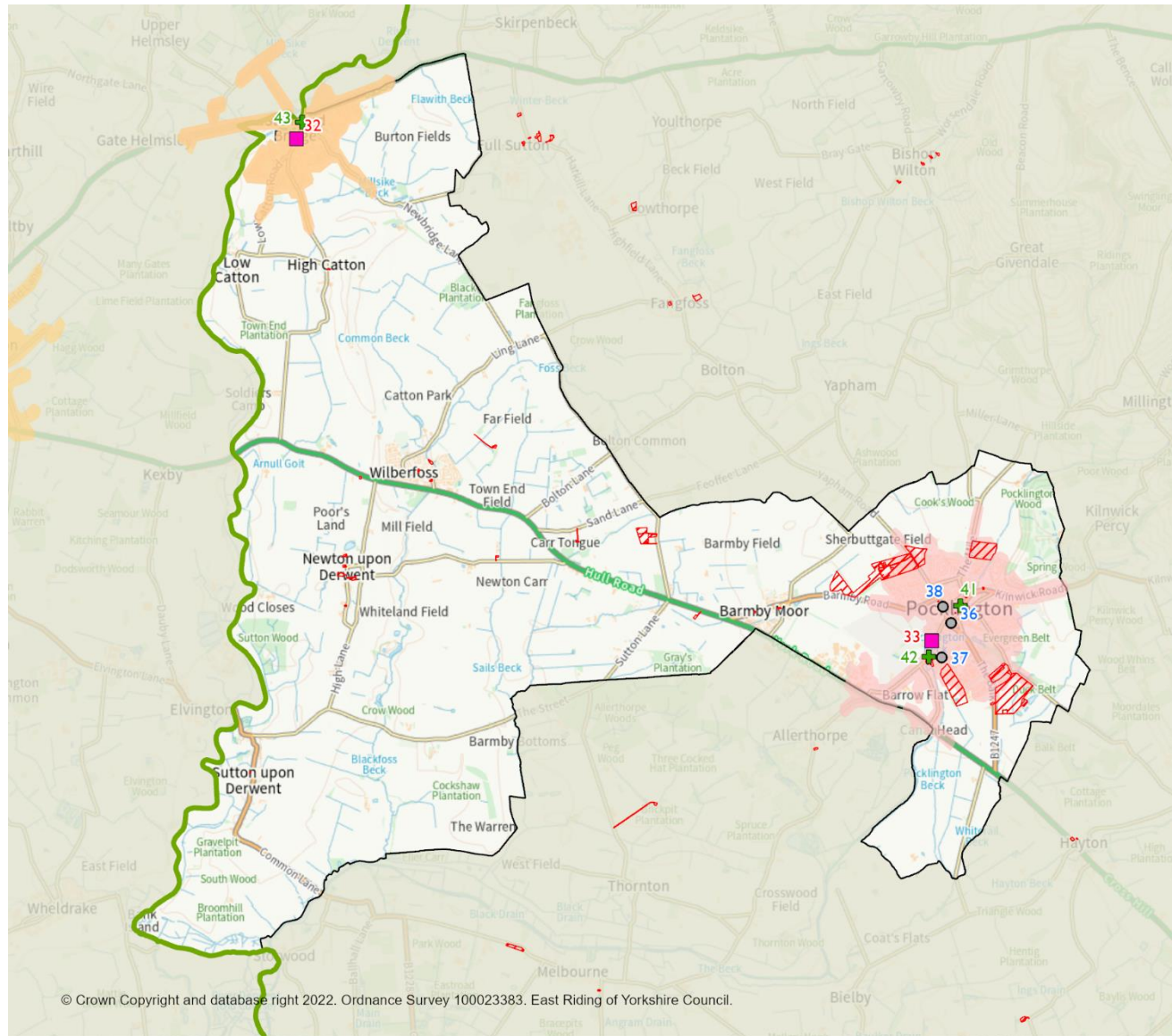
- GP Branch
- GP Branch Dispensing
- GP Main
- GP Main Dispensing

#### Other

- 8-8 Centre (Minor Injury Unit)
- A&E
- A&E; Urgent Care Centre
- GP Walk-In Service
- Health Clinic (Other)
- Health Trainers
- Hospital Service
- Independent Hospital/Unit
- Mental Health Unit
- Sexual Health Service
- Urgent Treatment/Care Centre



## Map 23 Pocklington Provincial



### Current Service Provision - Pocklington Provincial

- East Riding Wards
- East Riding Boundary
- 1 mile drive from East Riding pharmacies
- 1 mile drive from out of area pharmacies
- Housing Land Supply Position Statement (Formerly SHLAA)

#### Pharmacies

- Distance Selling Pharmacy
- Pharmacy
- Out of Area Pharmacies

#### General Practices

- GP Branch
- GP Branch Dispensing
- GP Main
- GP Main Dispensing

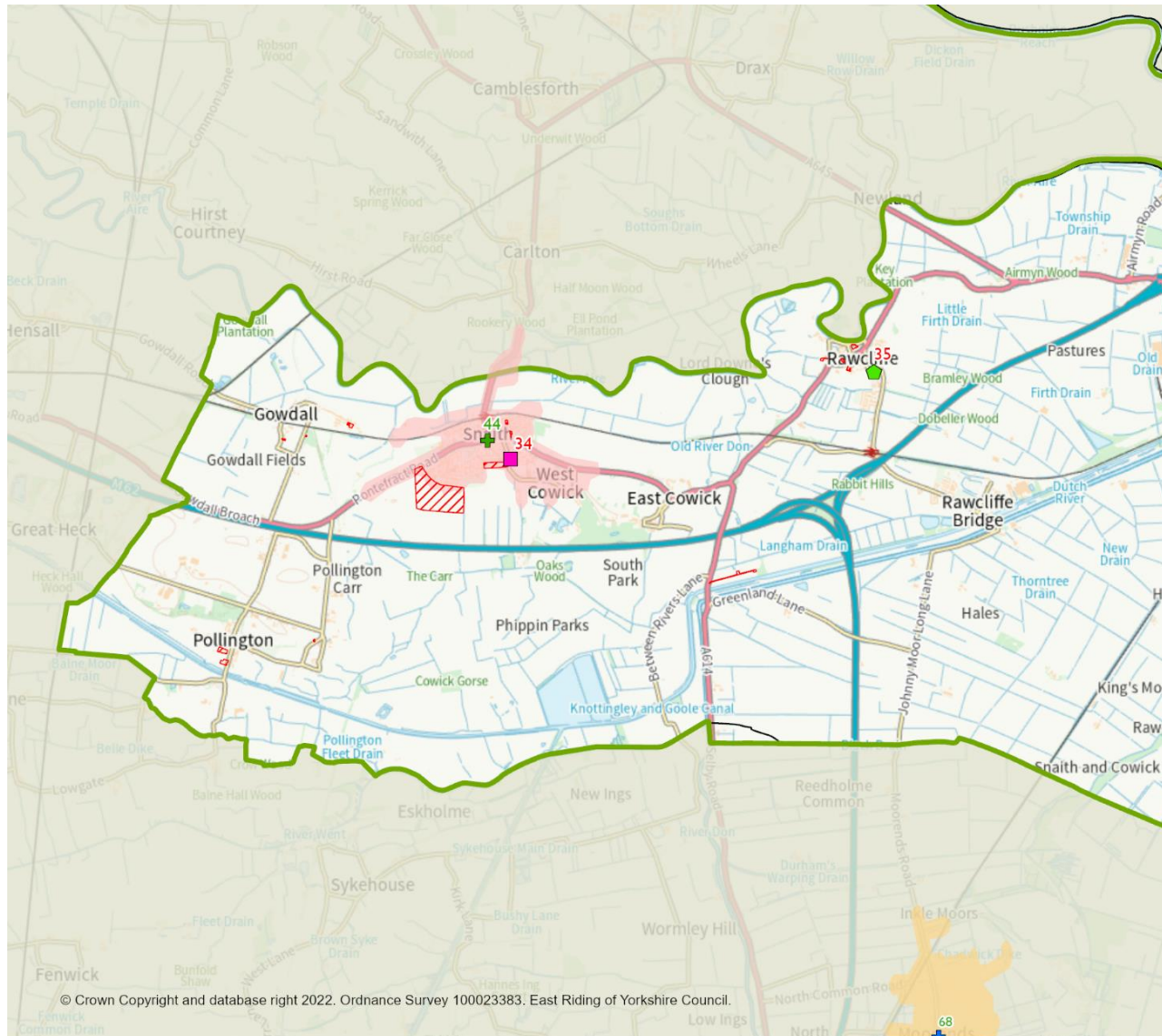
#### Other

- 8-8 Centre (Minor Injury Unit)
- A&E
- A&E Urgent Care Centre
- GP Walk-In Service
- Health Clinic (Other)
- Health Trainers
- Hospital Service
- Independent Hospital/Unit
- Mental Health Unit
- Sexual Health Service
- Urgent Treatment/Care Centre





## Map 24 Snaith, Airmyn, Rawcliffe and Marshland West



### Current Service Provision - Snaith, Airmyn, Rawcliffe and Marshland (West)

- East Riding Wards
- East Riding Boundary
- 1 mile drive from East Riding pharmacies
- 1 mile drive from out of area pharmacies
- Housing Land Supply Position Statement (Formerly SHLAA)

#### Pharmacies

- Distance Selling Pharmacy
- Pharmacy
- Out of Area Pharmacies

#### General Practices

- GP Branch
- GP Branch Dispensing
- GP Main
- GP Main Dispensing

#### Other

- 8-8 Centre (Minor Injury Unit)
- A&E
- A&E Urgent Care Centre
- GP Walk-In Service
- Health Clinic (Other)
- Health Trainers
- Hospital Service
- Independent Hospital/Unit
- Mental Health Unit
- Sexual Health Service
- Urgent Treatment/Care Centre



## Pharmacy Key

Map Key	Key Colour	Pharmacy Code	Trading Name	Ward	Postcode	PCN(s) served
1	Green	FVC85	Leven Pharmacy	Beverley Rural	HU17 5NL	Beverley
2	Green	FAL67	The Pharmacy Group (Bridlington Old Town Pharmacy)	Bridlington Central and Old Town	YO16 4QF	Bridlington
3	Green	FTR61	The Pharmacy Group (Flamborough Pharmacy)	Bridlington North	YO15 1JX	Bridlington
4	Green	FLF64	Marion Road Pharmacy	Bridlington North	YO16 7DJ	Bridlington
5	Green	FD898	Boots UK Limited	Bridlington South	YO15 2PY	Bridlington
6	Green	FCG19	Boots UK Limited	Bridlington South	YO15 2AT	Bridlington
7	Green	FE776	Boots UK Limited	Bridlington South	YO16 4JB	Bridlington
8	Green	FJG10	Boots UK Limited	Bridlington South	YO15 2AB	Bridlington
9	Green	FVW74	Bridlington Pharmacy	Bridlington South	YO15 2QL	Bridlington
10	Green	FR308	Station Avenue Pharmacy Ltd	Bridlington South	YO16 4LZ	Bridlington
11	Green	FG862	Superdrug Pharmacy	Bridlington South	YO15 2DQ	Bridlington
12	Green	FE319	Westhill Pharmacy	Bridlington South	YO16 4RB	Bridlington
13	Green	FRN54	Boots UK Limited	Cottingham North	HU16 4BD	Beverley Harthill
14	Green	FTC54	Lloyds Pharmacy	Cottingham North	HU16 5QQ	Beverley Harthill
15	Green	FK665	Boots UK Limited	Cottingham South	HU16 5QE	Harthill, Beverley
16	Green	FHC09	Boots UK Limited	Dale	HU15 2AS	River and Wolds
17	Green	FAN62	Elloughton Pharmacy	Dale	HU15 1HU	River and Wolds
18	Green	FVY76	Lloyds Pharmacy	Dale	HU15 1AF	River and Wolds
19	Green	FHX75	Boots UK Limited	Driffield and Rural	YO25 6PS	Yorkshire Coast and Wolds
20	Green	FMT32	Lloyds Pharmacy	Driffield and Rural	YO25 6ST	Yorkshire Coast and Wolds
21	Green	FTJ43	Tesco in-Store Pharmacy	Driffield and Rural	YO25 6RA	Yorkshire Coast and Wolds
22	Red	FF472	Care Meds UK (Distance Selling)	East Wolds and Coastal	YO15 3QY	Yorkshire Wolds and Coast
23	Green	FPP15	Lloyds Pharmacy	Goole North	DN14 6RU	Cygnets
24	Green	FV786	Lloyds Pharmacy	Goole North	DN14 6JD	Cygnets
25	Green	FPA06	Tesco in Store Pharmacy (100 hour)	Goole North	DN14 6BB	Cygnets
26	Green	FN41	Boots UK Limited	Goole South	DN14 5EZ	Cygnets
27	Green	FAP25	Stone (Coggrave) Pharmacy	Goole South	DN14 6AD	Cygnets
28	Green	FF647	Stone Pharmacy	Goole South	DN14 5RL	Cygnets
29	Green	FLL20	Boots UK Limited	Hessle	HU13 0AA	River & Wolds, Harthill
30	Green	FAQ50	Cohens Chemist	Hessle	HU13 9LZ	River & Wolds, Harthill
31	Green	FWL80	Hessle Pharmacy	Hessle	HU13 9BB	River & Wolds, Harthill
32	Green	FE985	Your Local Boots Pharmacy	Howden	DN14 7AA	Cygnets
33	Green	FNT90	Boots UK Limited	Howdenshire	HU15 2UJ	River and Wolds, Cygnets
34	Green	FNL62	Holme Pharmacy	Howdenshire	YO43 4BJ	River and Wolds, Cygnets
35	Green	FRD88	Lloyds Pharmacy	Minster and Woodmansey	HU17 0BS	Beverley
36	Green	FTC85	Morrisons Pharmacy	Minster and Woodmansey	HU17 8XE	Beverley
37	Green	FL730	BA Whittle Chemists	North Holderness	HU18 1PB	Yorkshire Coast and Wolds
38	Green	FD136	Day Lewis Pharmacy	North Holderness	HU18 1PA	Yorkshire Coast and Wolds
39	Green	FV203	Tesco in Store Pharmacy (100 hour)	North Holderness	HU18 1RE	Yorkshire Coast and Wolds
40	Green	FCL20	The Pharmacy Group: Hornsea	North Holderness	HU18 1AB	Yorkshire Coast and Wolds
41	Green	FJ848	Boots UK Limited	Pocklington Provincial	YO42 2AL	Nimbuscare
42	Green	FAF34	Boots UK Limited	Pocklington Provincial	YO42 2BS	Nimbuscare
43	Green	FHX18	Stamford Bridge Pharmacy	Pocklington Provincial	YO41 1AF	Nimbuscare
44	Green	FC013	Day Lewis Pharmacy	Snaith, Airmyn, Rawcliffe and Mar	DN14 9JP	Cygnets
45	Green	FJM51	Boots UK Limited	South East Holderness	HU19 2HB	Holderness
46	Green	FL966	Boots UK Limited	South East Holderness	HU19 2HB	Holderness
47	Green	FNX46	Patrinton Pharmacy	South East Holderness	HU12 0RA	Holderness
48	Green	FNA15	Boots UK Limited	South Hunsley	HU14 3BU	River & Wolds, Harthill
49	Green	FWQ81	Swanland Pharmacy	South Hunsley	HU14 3PE	River & Wolds, Harthill
50	Green	FJP31	Boots UK Limited	South West Holderness	HU12 8JA	Holderness
51	Green	FPM25	Boots UK Limited	South West Holderness	HU12 9PD	Holderness
52	Green	FDC68	East Riding Pharmacy (100 hour)	South West Holderness	HU12 8EX	Holderness
53	Green	FEC09	Boots UK Limited	St Mary's	HU17 9AE	Beverley
54	Green	FND71	Hengate Pharmacy	St Mary's	HU17 7BZ	Beverley
55	Green	FF850	Molescroft Pharmacy	St Mary's	HU17 7JY	Beverley
56	Green	FD809	Spinks The Chemist	St Mary's	HU17 8JU	Beverley
57	Green	FCN03	Superdrug Stores Plc	St Mary's	HU17 9AA	Beverley
58	Green	FVL19	Boots UK Limited	Tranby	HU10 6UA	Harthill
59	Green	FM088	Boots UK Limited	Willerby and Kirk Ella	HU10 6AD	Harthill
60	Green	FLE17	Boots UK Limited	Wolds Weighton	YO43 3AJ	Yorkshire Coast & Wolds, Harthill
61	Green	FJ024	Cohens Chemist (100 hour)	Wolds Weighton	YO43 3FF	Yorkshire Coast & Wolds, Harthill





## General Practice Key

Map Key	Key Colour	Practice Code	Practice Name	GP Details	Ward	Postcode	PCN(s) served
1	Red	B81034	Leven & Beeford Medical Practice	GP Main Dispensing	Beverley Rural	HU17 5NL	Yorkshire Coast and Wolds
2	Purple	B81006001	Manor House Surgery: Flamborough	GP Branch	Bridlington North	YO15 1LQ	Bridlington
3	Blue	B81060	Field House Surgery	GP Main	Bridlington South	YO15 2AT	Bridlington
4	Blue	B81006	Manor House Surgery	GP Main	Bridlington South	YO15 2QW	Bridlington
5	Blue	B81070	The Medical Centre: Practice One	GP Main	Bridlington South	YO16 4LZ	Bridlington
6	Blue	B81069	The Medical Centre: Practice Three	GP Main	Bridlington South	YO16 4LZ	Bridlington
7	Blue	B81014	The Medical Centre: Practice Two	GP Main	Bridlington South	YO16 4LZ	Bridlington
8	Blue	Y02656	The Wolds View Primary Care Centre	GP Main	Bridlington South	YO16 4QP	Bridlington
9	Blue	B81101001	Greengates Medical Group: Cottingham Medical Centre	GP Main	Cottingham South	HU16 4AJ	Harthill, Beverley
10	Blue	B81653	The Hallgate & Chestnuts Surgery: Chestnuts Surgery	GP Main	Cottingham South	HU16 4QX	Harthill, Beverley
11	Blue	B81653001	The Hallgate & Chestnuts Surgery: Hallgate Surgery	GP Main	Cottingham South	HU16 5QJ	Harthill, Beverley
12	Red	B81061	The Ridings Medical Group: Brough Surgery	GP Main Dispensing	Dale	HU15 1AY	River and Wolds
13	Green	B81061001	The Ridings Medical Group: South Cave Surgery	GP Branch Dispensing	Dale	HU15 2JG	River and Wolds
14	Red	B81092	The Medical Centre: Driffield Surgery	GP Main Dispensing	Driffield and Rural	YO25 6UH	Yorkshire Coast and Wolds
15	Red	B81037	The Park Surgery: Driffield	GP Main Dispensing	Driffield and Rural	YO25 6EB	Yorkshire Coast and Wolds
16	Green	B81034001	Leven & Beeford Medical Practice: Beeford Surgery	GP Branch Dispensing	East Wolds and Coastal	YO25 8BA	Yorkshire Wolds and Coast
17	Green	B81037001	The Park Surgery: Nafferton Surgery	GP Branch Dispensing	East Wolds and Coastal	YO25 4JR	Yorkshire Wolds and Coast
18	Blue	B81068	Bartholomew Medical Group	GP Main	Goole North	DN14 6RU	Cygnets
19	Blue	B81013	Montague Medical Practice	GP Main	Goole North	DN14 6JD	Cygnets
20	Purple	B81068001	Bartholomew Medical Group: Old Goole Surgery	GP Branch	Goole South	DN14 5RL	Cygnets
21	Blue	B81010	Hessle Grange Medical Practice	GP Main	Hessle	HU13 9LZ	River & Wolds
22	Blue	B81619	Park View Surgery	GP Main	Hessle	HU13 9AJ	Harthill
23	Blue	B81658	Peeler House Surgery	GP Main	Hessle	HU13 0RG	Harthill
24	Blue	B81088	Howden Medical Practice	GP Main	Howden	DN14 7DD	Cygnets
25	Red	B81041	Gilberdyke Health Centre	GP Main Dispensing	Howdenshire	HU15 2UL	Cygnets
26	Green	B81061005	The Ridings Medical Group: Bubwith Surgery	GP Branch Dispensing	Howdenshire	YO8 6LY	River and Wolds
27	Green	B81061004	The Ridings Medical Group: Holme on Spalding Moor Surgery	GP Branch Dispensing	Howdenshire	YO43 4BJ	River and Wolds
28	Green	B81004001	Eastgate Medical Group: Adlborough Practice	GP Branch Dispensing	Mid Holderness	HU11 4RW	Yorkshire Wolds and Coast
29	Blue	B81101	Greengates Medical Group: Greenwood Avenue	GP Main	Minster and Woodmansey	HU17 0HB	Beverley
30	Purple	B81101004	Greengates Medical Group: Minstergate	GP Branch	Minster and Woodmansey	HU17 8RH	Beverley
31	Red	B81004	Eastgate Medical Group: Hornsea Surgery	GP Main Dispensing	North Holderness	HU18 1LP	Yorkshire Coast and Wolds
32	Red	B82080001	MY Health Group: Stamford Bridge Medical Centre	GP Main Dispensing	Pocklington Provincial	YO41 1BR	Nimbuscare
33	Red	B81036	Pocklington Group Practice: The Beckside Centre	GP Main Dispensing	Pocklington Provincial	YO42 2BS	Nimbuscare
34	Red	B81029	Snaith and Rawcliffe Medical Group: The Marshes	GP Main Dispensing	Snaith, Airmyn, Rawcliffe and Marshland	DN14 9DY	Cygnets
35	Green	B81029001	Snaith and Rawcliffe Medical Group: The Surgery (Station Road)	GP Branch Dispensing	Snaith, Airmyn, Rawcliffe and Marshland	DN14 8QR	Cygnets
36	Purple	B81025005	Holderness Health: Chapel Lane Surgery Keyingham	GP Branch	South East Holderness	HU12 9RA	Holderness
37	Green	B81025002	Holderness Health: Hodgson Lane Surgery Roos	GP Branch Dispensing	South East Holderness	HU12 0LF	Holderness
38	Green	B81025006	Holderness Health: Prospect Surgery Keyingham	GP Branch Dispensing	South East Holderness	HU12 9RA	Holderness
39	Red	B81025	Holderness Health: St Nicholas Surgery Withernsea	GP Main Dispensing	South East Holderness	HU19 2PZ	Holderness
40	Green	B81025001	Holderness Health: St Patrick's Surgery Patrington	GP Branch Dispensing	South East Holderness	HU12 0PH	Holderness
41	Blue	B81666	North Ferriby Surgery: Dr Mitchell	GP Main	South Hunsley	HU14 3DB	Harthill
42	Red	B81025007	Holderness Health: Church View Surgery	GP Main Dispensing	South West Holderness	HU12 8JE	Holderness
43	Red	B81025004	Holderness Health: Hedon Group Practice Market Hill House	GP Main Dispensing	South West Holderness	HU12 8JD	Holderness
44	Blue	B81101003	Greengates Medical Group: Beverley and Molecroft Surgery	GP Main	St Mary's	HU17 9GQ	Beverley
45	Green	B81101002	Greengates Medical Group: Walkergate Surgery	GP Branch Dispensing	St Mary's	HU17 9BP	Beverley
46	Red	B81042	Manor Road Surgery, The Beverley Health Centre	GP Main Dispensing	St Mary's	HU17 7BZ	Beverley
47	Blue	B81082	North Beverley Medical Centre	GP Main	St Mary's	HU17 7JY	Beverley
48	Blue	B81051	Old Fire Station Surgery	GP Main	St Mary's	HU17 8JW	Beverley
49	Blue	B81100	Anlaby Surgery	GP Main	Tranby	HU10 6QJ	Harthill
50	Blue	B81024	Willerby & Swanland Surgery: Willerby Surgery	GP Main	Willerby and Kirk Ella	HU10 6BP	Harthill
51	Red	B81009	Market Weighton Group Practice	GP Main Dispensing	Wolds Weighton	YO43 3FF	Harthill
52	Green	B81092001	The Medical Centre: Wetwang Surgery	GP Branch Dispensing	Wolds Weighton	YO25 9XX	Yorkshire Coast & Wolds



## Other Providers Key

Map Key	Key Colour	Other Provider Name	Service Details	Ward	Postcode
1	Blue	Bransholme Urgent Treatment Centre - City Health Care Partnership	Urgent Treatment/ Care Centre	Bransholme West (Hull City Council)	HU7 4DW
2	Green	Bridlington Health Trainer Shop - Humber Teaching NHS Foundation Trust	Health Trainers	Bridlington South	YO15 2AB
3	Blue	Bridlington Medical Centre	Health Clinic (Other)	Bridlington South	YO16 4LZ
4	Blue	Bridlington Urgent Treatment Centre - City Health Care Partnership	Urgent Treatment/ Care Centre	Bridlington South	YO16 4QP
5	Purple	Sexual Health Service - Bridlington, East Riding	Sexual Health Service	Bridlington South	YO16 4QP
6	White	Nelsons Court Rehabilitation Hospital - York and Scarborough Teaching Hospitals NHS Foundation Trust	Hospital Service	City of York Council	YO24 1HD
7	Green	St Monica's Easingwold - York and Scarborough Teaching Hospitals NHS Foundation Trust	Hospital Service	City of York Council	YO61 3JD
8	White	Archways Community Health Centre - York and Scarborough Teaching Hospitals NHS Foundation Trust	Hospital Service	Clifton (City of York Council)	YO31 8YZ
9	Pink	Nuffield Health, York Hospital	Independent Hospital/Unit	Clifton (City of York Council)	YO31 8TA
10	White	White Cross Court Rehabilitation Hospital - York and Scarborough Teaching Hospitals NHS Foundation Trust	Hospital Service	Clifton (City of York Council)	YO31 8FT
11	Blue	York Hospital - York and Scarborough Teaching Hospitals NHS Foundation Trust	A&E; Urgent Care Centre	Clifton (City of York Council)	YO31 8HE
12	White	Castle Hill Hospital - Hull University Teaching Hospitals NHS Trust	Hospital Service	Cottingham North	HU16 5JQ
13	Blue	The Cottingham Clinic	Health Clinic (Other)	Cottingham South	HU16 5QJ
14	Orange	Alfred Bean Community Hospital - City Healthcare Partnership	8-8 Centre (Minor Injury Unit)	Driffield and Rural	YO25 5JR
15	Purple	Sexual Health Service - Driffield, East Riding	Sexual Health Service	Driffield and Rural	YO25 5JR
16	Pink	The Retreat Hospital York, Mental Health Provider	Independent Hospital/Unit	Fishergate (City of York Council)	YO10 5BN
17	Blue	Bartholomew Medical Group	Health Clinic (Other)	Goole North	DN14 6RU
18	Green	Goole Base - Humber Teaching NHS Foundation Trust	Health Trainers	Goole North	DN14 6BB
19	Blue	Goole Health Centre	Health Clinic (Other)	Goole North	DN14 6RU
20	Blue	Goole Midwifery Team - Goole	Health Clinic (Other)	Goole North	DN14 6RX
21	Blue	Goole Urgent Treatment Centre - City Health Care Partnership	Urgent Treatment/ Care Centre	Goole North	DN14 6RX
22	Blue	Midwifery - Goole, East Riding (Community Team)	Health Clinic (Other)	Goole North	DN14 6RU
23	Purple	Sexual Health Service - Goole, East Riding	Sexual Health Service	Goole North	DN14 6RX
24	Red	Diana, Princess Of Wales Hospital - Northern Lincolnshire and Goole Foundation Trust	A&E	Grimsby Park (North East Lincolnshire Council)	DN33 2BA
25	Pink	St Hugh's Hospital	Independent Hospital/Unit	Heneage (North East Lincolnshire Council)	DN32 9RP
26	Blue	Hessle Health Centre	Health Clinic (Other)	Hessle	HU13 9LZ
27	Purple	Sexual Health Service - Hessle, East Riding	Sexual Health Service	Hessle	HU13 9LZ
28	Blue	Gilberdyke Health Centre	Health Clinic (Other)	Howdenshire	HU15 2UL
29	Orange	Maister Lodge Inpatient Mental Health Unit - Humber Teaching NHS Foundation Trust	Mental Health Unit	Ings (Hull City Council)	HU8 0RB
30	Purple	Story Street Walk in Centre, Wilberforce Health Centre - City Health Care Partnership	GP Walk-In Service	Kingston upon Hull West (Hull City Council)	HU1 3SA
31	Blue	Malton, Norton & District Hospital - Northern Doctors, NHS Scarborough and Rydale Place	Urgent Treatment/ Care Centre	Malton (Rydale District Council)	YO17 7NG
32	Orange	Avondale Assessment Unit and Psychiatric Intensive Care - Humber Teaching NHS Foundation Trust	Mental Health Unit	Myton (Hull City Council)	HU3 2RT
33	Red	Hull Royal Infirmary - Hull University Teaching Hospitals NHS Trust	A&E	Myton (Hull City Council)	HU3 2JZ
34	Pink	Westlands Female Inpatient Mental Health Unit	Independent Hospital/Unit	Newington (Hull City Council)	HU3 5QE
35	Blue	The Eastgate Medical Group	Health Clinic (Other)	North Holderness	HU18 1LP
36	Blue	Pocklington Dental Access Centre	Health Clinic (Other)	Pocklington Provincial	YO42 2AR
37	Blue	Pocklington Group Practice	Health Clinic (Other)	Pocklington Provincial	YO42 2BS
38	Blue	Pocklington Health Centre	Health Clinic (Other)	Pocklington Provincial	YO42 2DF
39	Blue	Teaching Hospitals NHS Foundation Trust, Northern Doctors, Scarborough and Rydale	A&E; Urgent Care Centre	Scarborough Borough Council	YO12 6QL
40	Red	Scunthorpe General Hospital- Northern Lincolnshire and Goole Foundation Trust	A&E	Scunthorpe Town (North Lincolnshire Council)	DN15 7BH
41	Blue	The New Selby War Memorial Hospital - Harrogate and District NHS Foundation Trust	Urgent Treatment/ Care Centre	Selby West (Selby District Council)	YO8 9BX
42	Orange	Withernsea Community Hospital - City Healthcare Partnership	8-8 Centre (Minor Injury Unit)	South East Holderness	HU19 2QB
43	Green	Withernsea Base - Humber Teaching NHS Foundation Trust	Health Trainers	South East Holderness	HU19 2QA
44	Orange	Newbridges Male Acute Inpatient Mental Health Unit - Humber Teaching NHS Foundation Trust	Mental Health Unit	Southcoates West (Hull City Council)	HU9 2BH
45	Blue	Beverley Urgent Treatment Centre - City Health Care Partnership	Urgent Treatment/ Care Centre	St Mary's	HU17 0FA
46	Blue	Coltman Avenue Clinic	Health Clinic (Other)	St Mary's	HU17 9LP
47	Orange	Hawthorne Court Mental Health Unit - Humber Teaching NHS Foundation Trust	Mental Health Unit	St Mary's	HU17 7AS
48	Purple	Sexual Health Service - Beverley, East Riding	Sexual Health Service	St Mary's	HU17 7BZ
49	Blue	The Beverley Health Centre	Health Clinic (Other)	St Mary's	HU17 7BZ
50	Blue	The North Beverley Medical Centre	Health Clinic (Other)	St Mary's	HU17 7JY
51	Pink	Partnerships in Care Stockton Hall Hospital	Independent Hospital/Unit	Strensall (City of York Council)	YO32 9UN
52	Blue	Anlaby Clinic	Health Clinic (Other)	Tranby	HU10 6UE
53	Pink	Spire Hull and East Riding Hospital	Independent Hospital/Unit	Tranby	HU10 7AZ
54	Pink	Priory Hospital - Mental Health Service	Independent Hospital/Unit	Wolds Weighton	YO43 3EQ